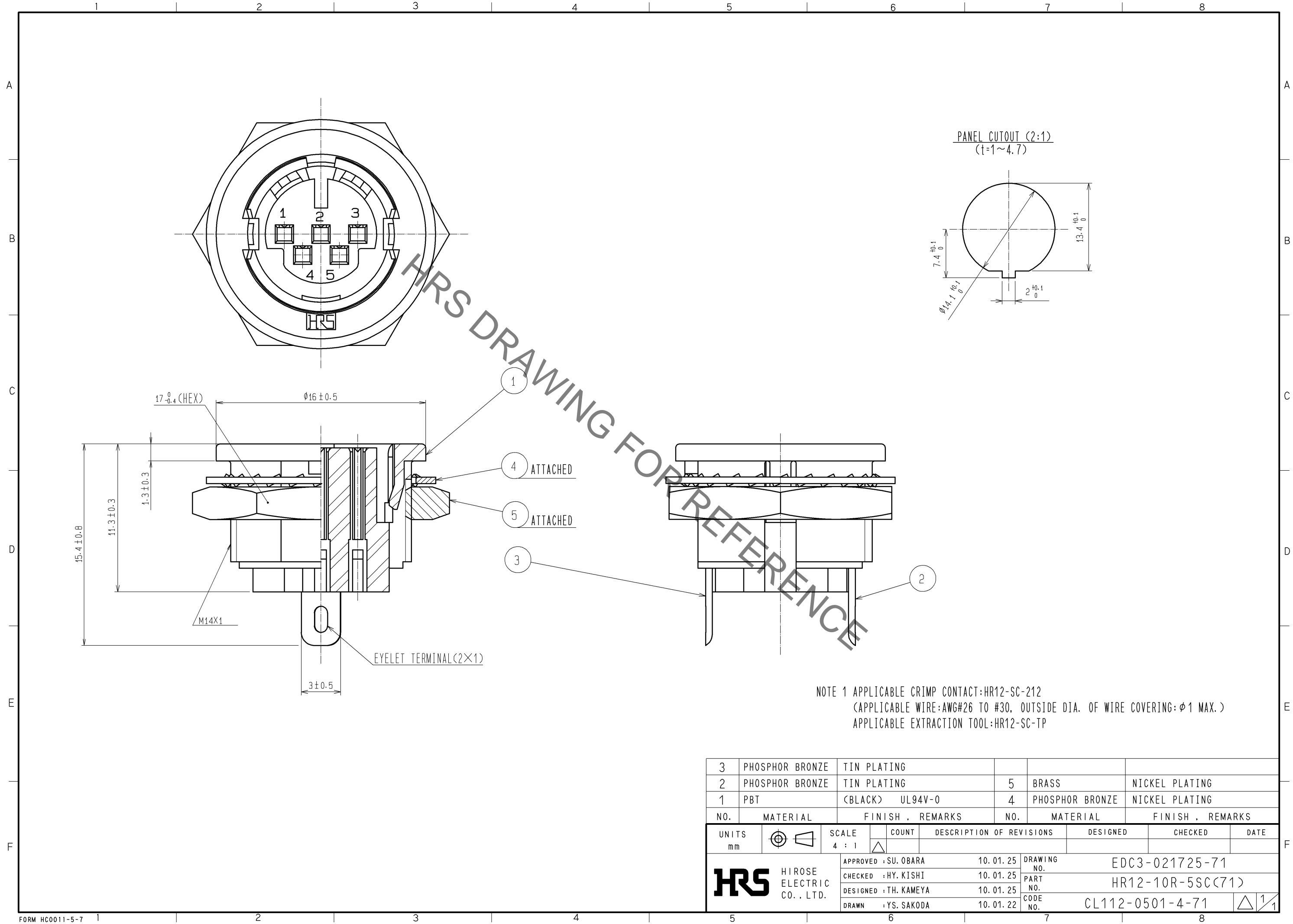


Jan.1.2022 Copyright 2022 HIROSE ELECTRIC CO., LTD. All Rights Reserved.
In case of consideration for using Automotive equipment / device which demand high reliability, kindly contact our sales window correspondents.



NOTE 1 APPLICABLE CRIMP CONTACT:HR12-SC-212
(APPLICABLE WIRE:AWG#26 TO #30, OUTSIDE DIA. OF WIRE COVERING:φ1 MAX.)
APPLICABLE EXTRACTION TOOL:HR12-SC-TP

3	PHOSPHOR BRONZE	TIN PLATING			
2	PHOSPHOR BRONZE	TIN PLATING	5	BRASS	NICKEL PLATING
1	PBT	(BLACK) UL94V-0	4	PHOSPHOR BRONZE	NICKEL PLATING
NO.	MATERIAL	FINISH , REMARKS	NO.	MATERIAL	FINISH , REMARKS
UNITS mm		SCALE 4 : 1	COUNT 	DESCRIPTION OF REVISIONS	DESIGNED
HIROSE ELECTRIC CO., LTD.		APPROVED : SU. OBARA	10. 01. 25	DRAWING NO.	EDC3-021725-71
		CHECKED : HY. KISHI	10. 01. 25	PART NO.	HR12-10R-5SC(71)
		DESIGNED : TH. KAMEYA	10. 01. 25	CODE NO.	CL112-0501-4-71
		DRAWN : YS. SAKODA	10. 01. 22		1/1

Mouser Electronics

Authorized Distributor

Click to View Pricing, Inventory, Delivery & Lifecycle Information:

[Hirose Electric:](#)

[HR12-10R-5SC\(71\)](#)