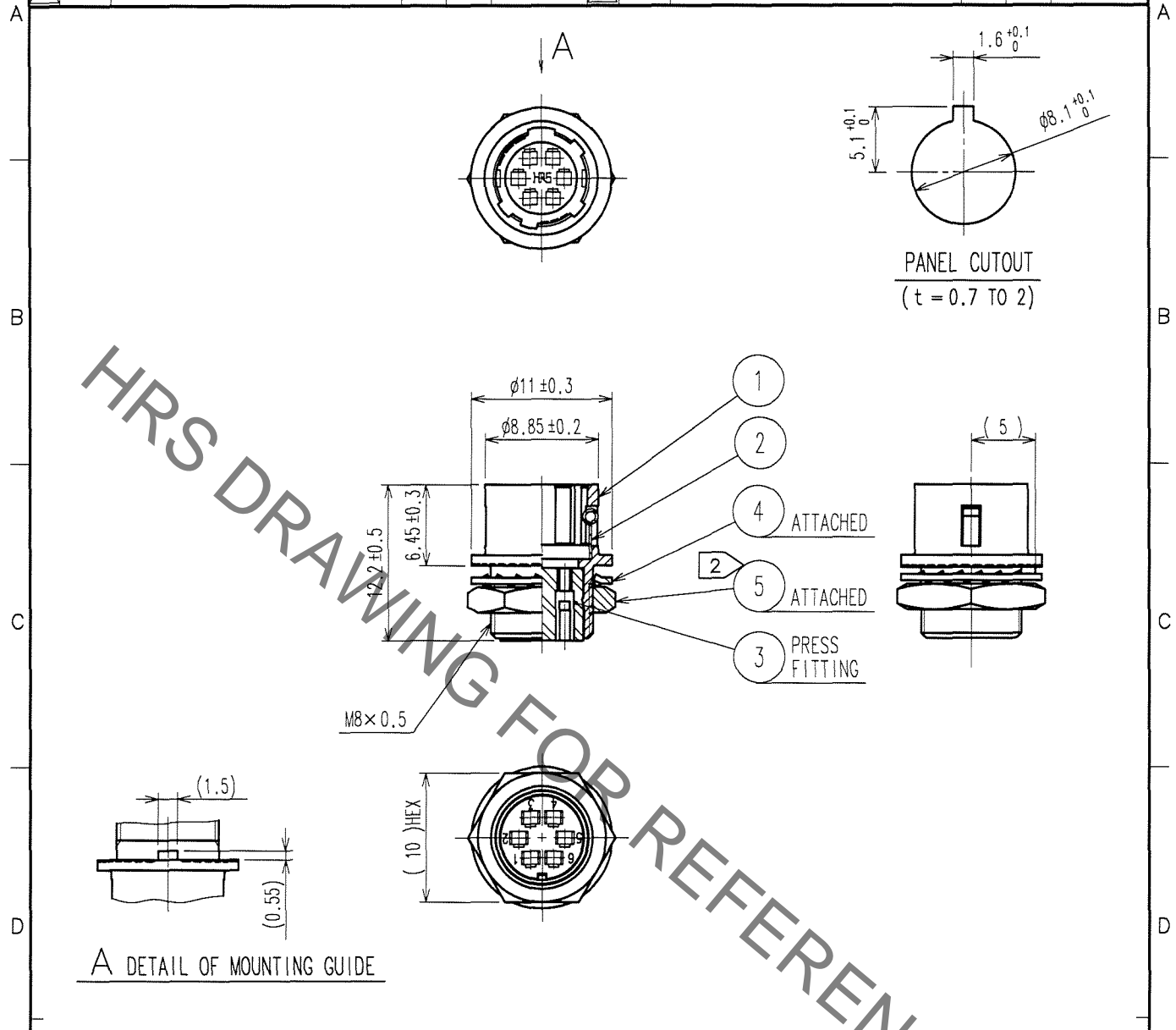


Aug. 1. 2021 Copyright 2021 HIROSE ELECTRIC CO., LTD. All Rights Reserved. In case of consideration for using Automotive equipment / device which demand high reliability, kindly contact our sales window correspondents.

1		2			3			4		
COUNT	DESCRIPTION OF REVISIONS	BY	CHKD	DATE	COUNT	DESCRIPTION OF REVISIONS	BY	CHKD	DATE	
△					△					
△					△					
△					△					



HRS DRAWING FOR REFERENCE

A DETAIL OF MOUNTING GUIDE

NOTES 1 APPLICABLE CRIMP CONTACT: HR10-PC-212 (CL110-0514-3)
 APPLICABLE WIRE: AWG#26 TO #30 (COVERED WIRE MAX. OUTSIDE DIA. φ1)
 APPLICABLE CONTACT REMOVAL TOOL (EXTRACTION TOOL): RP6-SC-TP (CL150-0039-0)
 2 THE RECOMMENDED CLAMP TORQUE OF REF. NO. ⑤ TO BE 1.5 N·m.
 LOCTITE 242, HENKEL JAPAN OR EQUIVALENT IS RECOMMENDED TO PREVENT REF. NO. ⑤ FROM LOOSENING.

NO.	MATERIAL	FINISH, REMARKS	NO.	MATERIAL	FINISH, REMARKS
3	POLYBUTYLENE TEREPHTHALATE	(BLACK) UL94V-0			
2	STAINLESS STEEL		5	BRASS	NICKEL PLATING
1	ZINC ALLOY	MATTE FINISH NICKEL PLATED	4	PHOSPHOR BRONZE	NICKEL PLATING

CODE NO. (OLD)	DRAWN	DESIGNED	CHECKED	APPROVED	RELEASED
CL	<i>M. Sato</i>	<i>T. Hosoi</i>	<i>E. Kunita</i>	<i>M. Sato</i>	
	07.04.11	07.04.11	07.04.11	07.04.11	

	DRAWING NO.	PART NO.
	EDC4-042729-73	HR10G-7R-6PC(73)
SCALE 2 : 1		CODE NO.
UNITS mm		CL110-1706-0-73

TO
R

Mouser Electronics

Authorized Distributor

Click to View Pricing, Inventory, Delivery & Lifecycle Information:

[Hirose Electric:](#)

[HR10G-7R-6PC\(73\)](#)