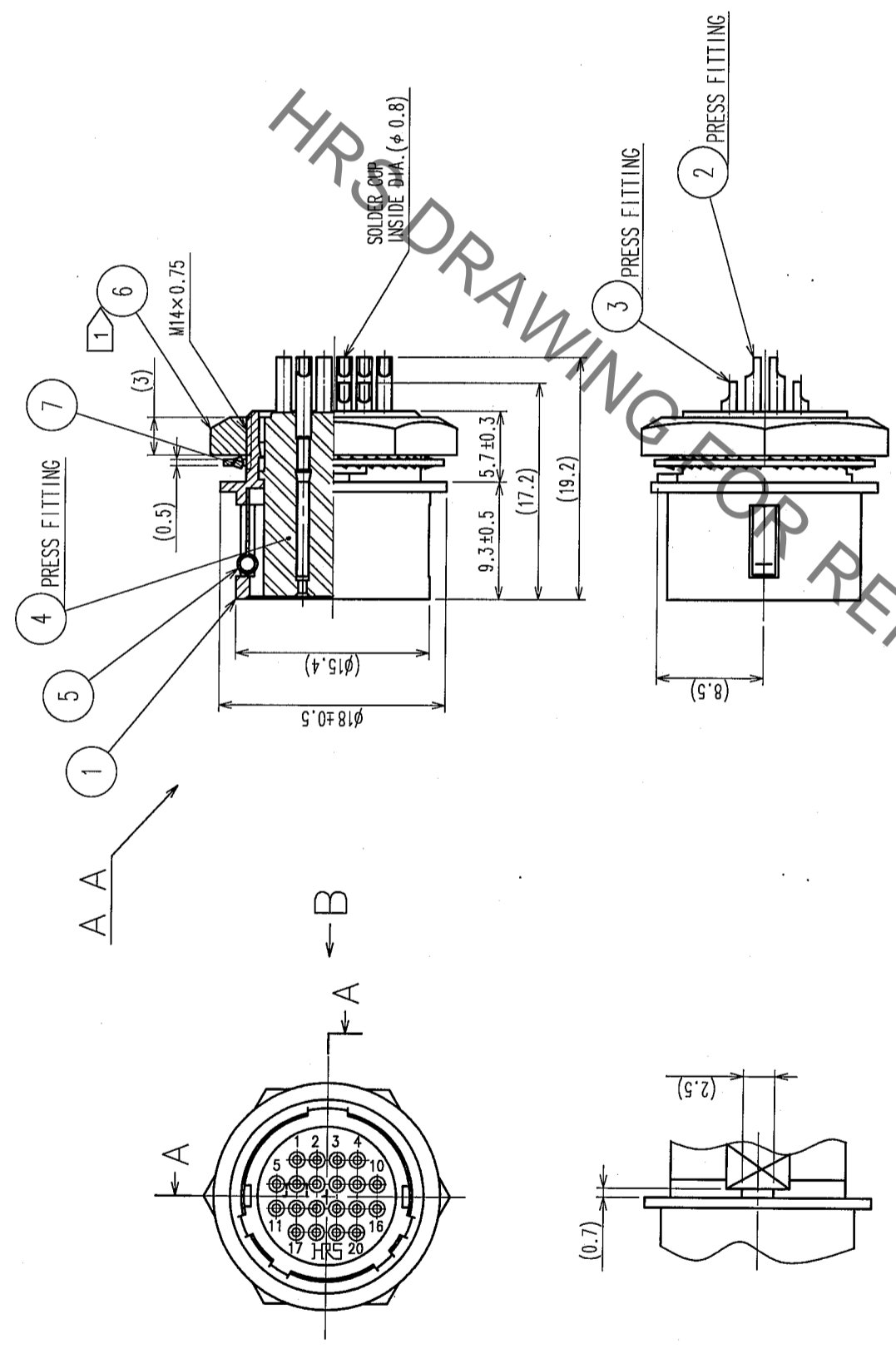
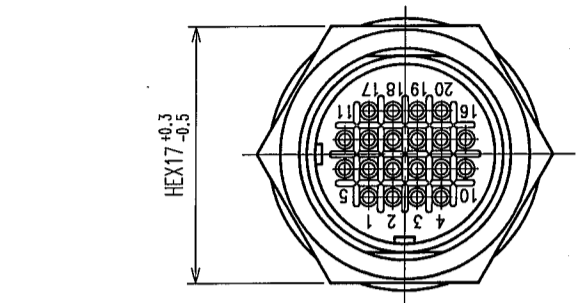
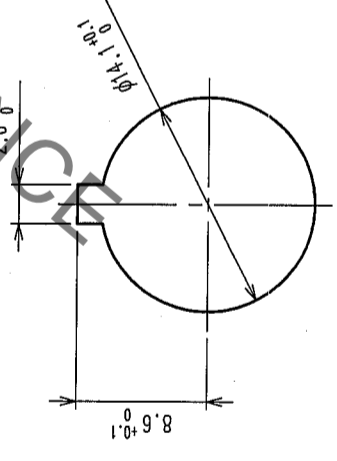
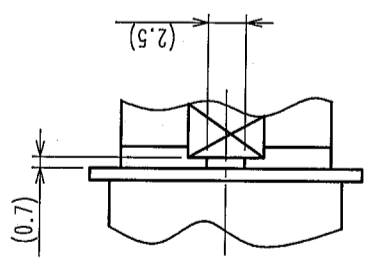


COUNT	DESCRIPTION OF REVISIONS	BY	CHKD	DATE	COUNT	DESCRIPTION OF REVISIONS	BY	CHKD	DATE



NOTE ① RECOMMENDED CLAMP TORQUE OF REF NO. ⑥ : 2-2.5 N · m.
 LOCTITE 242, HENKEL JAPAN OR EQUIVALENT IS RECOMMENDED TO PREVENT REF.NO. ⑥ FROM LOOSENING.

B DETAIL OF MOUNTING GUIDE



PANEL CUTOUT
 $t = 0.8 \sim 1.5$

NO.	MATERIAL	FINISH, REMARKS	NO.	MATERIAL	FINISH, REMARKS
4	POLYAMIDE	(BLACK) UL94V-0	7	PHOSPHOR BRONZE	NICKEL PLATING
3	BERYLLIUM COPPER	SILVER PLATING 2μm min.	6	BRASS	NICKEL PLATING
2	BERYLLIUM COPPER		5	STAINLESS STEEL	
1	ZINC ALLOY	MATTE FINISH NICKEL PLATING			

CODE NO. (COLD)	DRAWN	DESIGNED	CHECKED	APPROVED	RELEASED
	D. Matsume	D. Matsume	E. Kuroki	K. Saito	
	05.10.01	05.10.01	05.10.03	05.10.14	

DRAWING NO.	PART NO.
EDC3-045401-73	HR10A-13R-20S(73)
SCALE 2:1	
UNITS mm	
	CODE NO. CL110-0714-2-73

TO	
R	

Mouser Electronics

Authorized Distributor

Click to View Pricing, Inventory, Delivery & Lifecycle Information:

[Hirose Electric:](#)

[HR10A-13R-20S\(73\)](#)