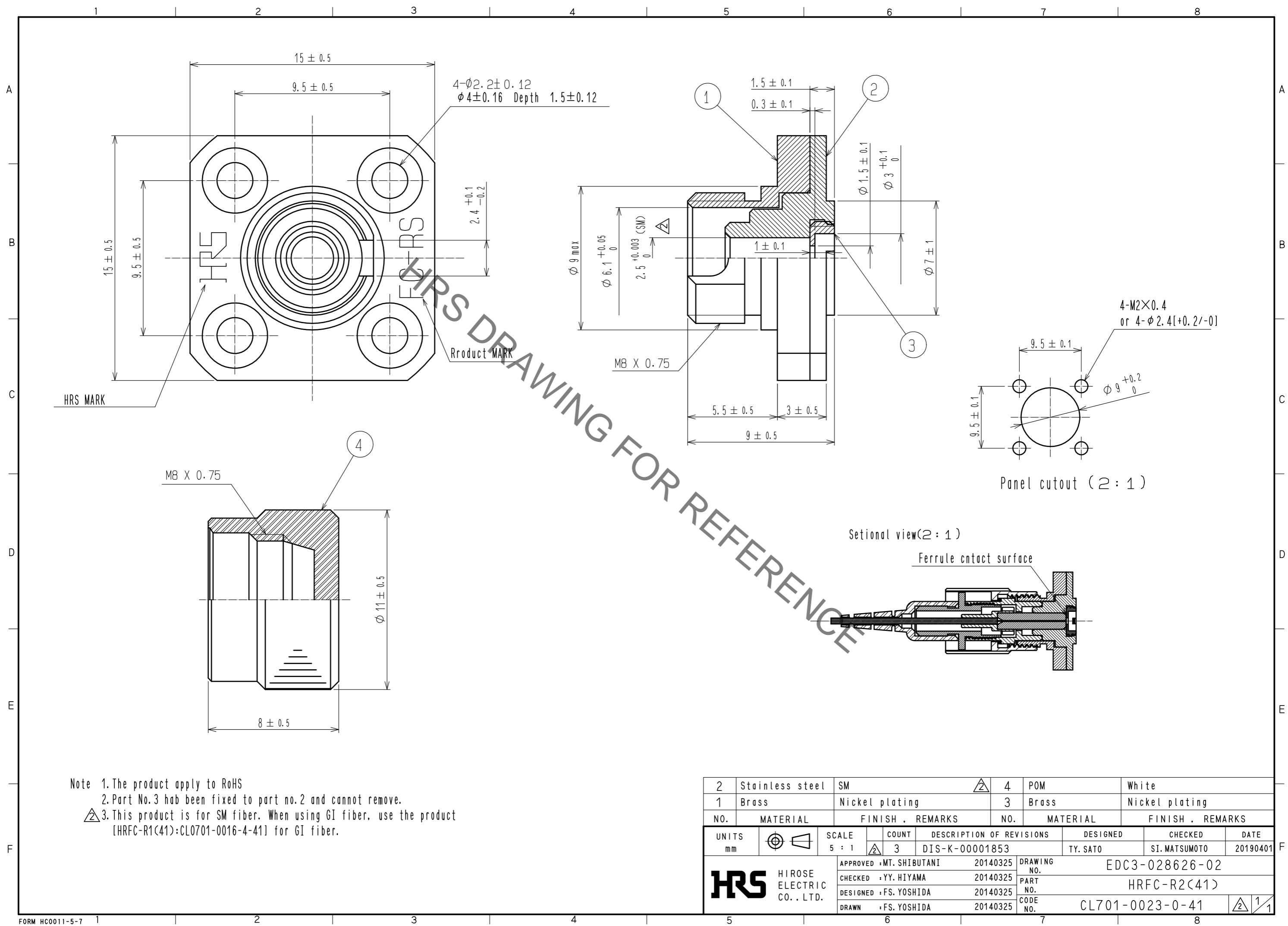


Jun.1.2019 Copyright 2019 HIROSE ELECTRIC CO., LTD. All Rights Reserved.
In case of consideration for using Automotive equipment / device which demand high reliability, kindly contact our sales window correspondents.



Note 1. The product apply to RoHS
 2. Part No.3 has been fixed to part no.2 and cannot remove.
 3. This product is for SM fiber. When using GI fiber, use the product [HRFC-R1(41):CL0701-0016-4-41] for GI fiber.

2	Stainless steel	SM	4	POM	White
1	Brass	Nickel plating	3	Brass	Nickel plating
NO.	MATERIAL	FINISH . REMARKS	NO.	MATERIAL	FINISH . REMARKS
UNITS	mm	SCALE	5 : 1	COUNT	3
DESCRIPTION OF REVISIONS			DESIGNED	CHECKED	DATE
DIS-K-00001853			TY. SATO	SI. MATSUMOTO	20190401
APPROVED : MT. SHIBUTANI			20140325	DRAWING NO. EDC3-028626-02	
CHECKED : YY. HIYAMA			20140325	PART NO. HRFC-R2(41)	
DESIGNED : FS. YOSHIDA			20140325	CODE NO. CL701-0023-0-41	
DRAWN : FS. YOSHIDA			20140325	1/1	

Mouser Electronics

Authorized Distributor

Click to View Pricing, Inventory, Delivery & Lifecycle Information:

[Hirose Electric:](#)

[HRFC-R2\(41\)](#)