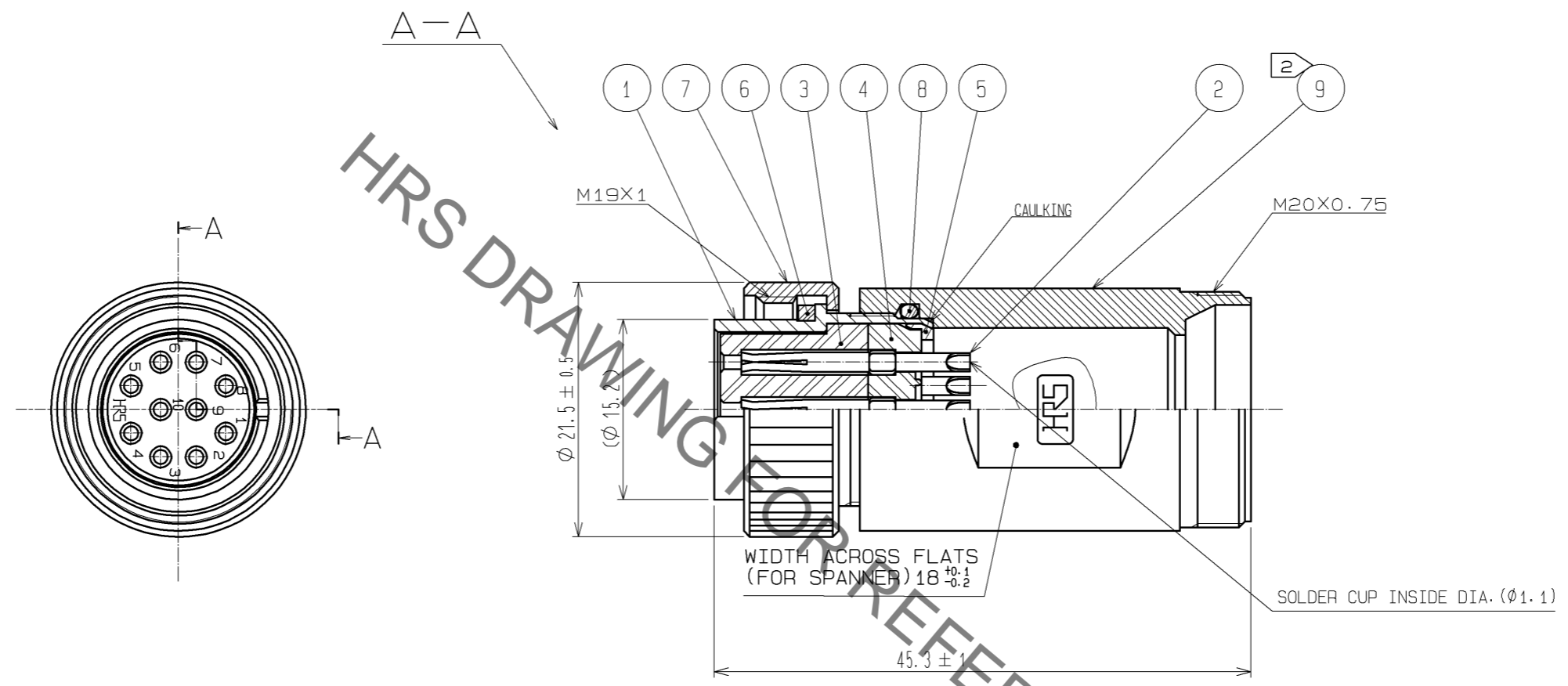


Jun.1.2019 Copyright 2019 HIROSE ELECTRIC CO., LTD. All Rights Reserved.
 In case of consideration for using Automotive equipment / device which demand high reliability, kindly contact our sales window correspondents.



- NOTES
- 1 SILVER PLATING 5µm min.
 - 2 THE RECOMMENDED CLAMP TORQUE, REF. NO. ⑨ : 3N·m.
 LOCTITE 263, HENKEL JAPAN OR EQUIVALENT IS RECOMMENDED TO PREVENT REF. NO. ⑨ FROM LOOSENING.
 - 3 THIS PRODUCTS TO BE USED WITH CABLE CLAMP, JR16WCC-*(72).
 * DESIGNATE DIAMETER(mm) OF APPLICABLE CABLE.
 - 4 ONE EXAMPLE OF THE ROTATION OF REF. NO. ⑨ TO REF. NO. ① IS SHOWN.
 - 5 THE CABLE PULL AND TWISTING STRENGTH AND OTHER CHARACTERISTICS MAY DIFFER, DEPENDING ON THE CABLE STRUCTURE, PLEASE CONFIRM BEFORE THE USE.

NO.	MATERIAL	FINISH . REMARKS	NO.	MATERIAL	FINISH . REMARKS
5	POLYACETAL	(WHITE)			
4	DIALLYL PHTHALATE	(BLACK) UL94V-0	9	ZINC ALLOY	CHROME PLATING
3	DIALLYL PHTHALATE	(BLACK) UL94V-0	8	SILICONE RUBBER	(BLACK)
2	COPPER ALLOY	1	7	BRASS	CHROME PLATING
1	ZINC ALLOY	CHROME PLATING	6	SILICONE RUBBER	(RED)

UNITS	SCALE	COUNT	DESCRIPTION OF REVISIONS	DESIGNED	CHECKED	DATE
mm	2 : 1	△				
APPROVED : EJ. KUNII			12.10.01	DRAWING NO. EDC3-111154-71		
CHECKED : EJ. KUNII			12.10.01	PART NO. RM15WTPZA-10S(71)		
DESIGNED : HY. KISHI			12.09.28	CODE NO. CL109-1732-0-71		
DRAWN : HY. KISHI			12.09.28	△ 1/1		

Mouser Electronics

Authorized Distributor

Click to View Pricing, Inventory, Delivery & Lifecycle Information:

[Hirose Electric:](#)

[RM15WTPZA-10S\(71\)](#)