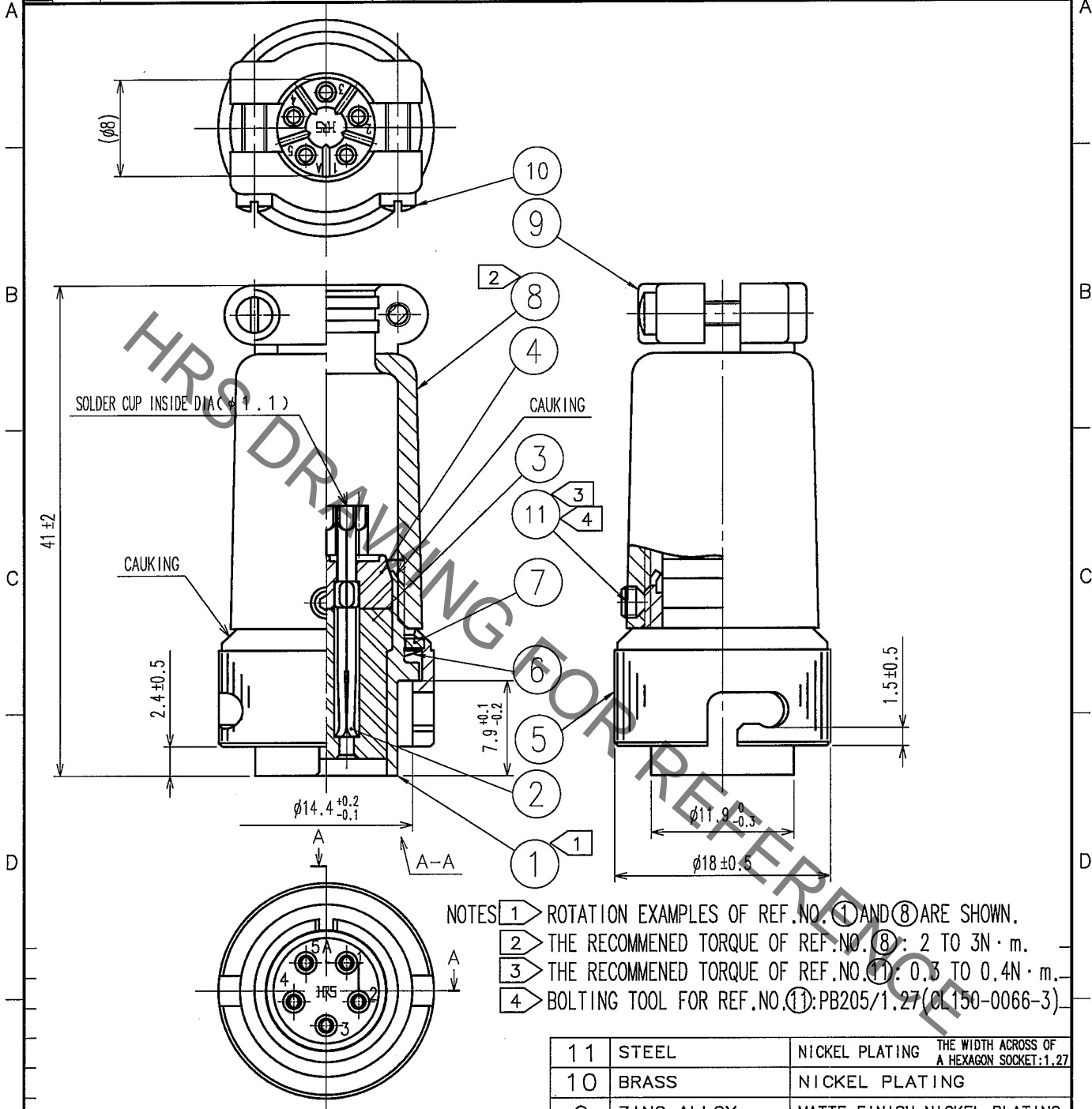


Jun.1.2019 Copyright 2019 HIROSE ELECTRIC CO., LTD. All Rights Reserved.
In case of consideration for using Automotive equipment / device which demand high reliability, kindly contact our sales window correspondents.

1					2					3					4				
COUNT	DESCRIPTION OF REVISIONS				BY	CHKD	DATE	COUNT	DESCRIPTION OF REVISIONS				BY	CHKD	DATE				
△								△											
△								△											
△								△											



- NOTES
- ① ROTATION EXAMPLES OF REF.NO. ① AND ⑧ ARE SHOWN.
 - ② THE RECOMMENDED TORQUE OF REF.NO. ⑧: 2 TO 3N · m.
 - ③ THE RECOMMENDED TORQUE OF REF.NO. ⑪: 0.3 TO 0.4N · m.
 - ④ BOLTING TOOL FOR REF.NO. ⑪: PB205/1.27 (CL150-0066-3)

4	DIALLYL PHTHALATE	(BLACK) UL94V-0	11	STEEL	NICKEL PLATING
3	DIALLYL PHTHALATE	(BLACK) UL94V-0	10	BRASS	NICKEL PLATING
2	COPPER ALLOY	SILVER PLATING 5μ m min.	9	ZINC ALLOY	MATTE FINISH NICKEL PLATING
1	ZINC ALLOY	MATTE FINISH NICKEL PLATING	8	ZINC ALLOY	MATTE FINISH NICKEL PLATING
			7	BRASS	NICKEL PLATING
			6	BERYLLIUM COPPER	NICKEL PLATING
			5	BRASS	MATTE FINISH NICKEL PLATING

NO.	MATERIAL	FINISH, REMARKS	NO.	MATERIAL	FINISH, REMARKS
11	STEEL	NICKEL PLATING	THE WIDTH ACROSS OF A HEXAGON SOCKET: 1.27		
10	BRASS	NICKEL PLATING			
9	ZINC ALLOY	MATTE FINISH NICKEL PLATING			
8	ZINC ALLOY	MATTE FINISH NICKEL PLATING			
7	BRASS	NICKEL PLATING			
6	BERYLLIUM COPPER	NICKEL PLATING			
5	BRASS	MATTE FINISH NICKEL PLATING			

CODE NO. (OLD) CL		DRAWN Y. Yamada 05.08.26	DESIGNED Y. Yamada 05.08.26	CHECKED H. Zemba 05.08.30	APPROVED M. Sato 05.09.01	RELEASED
DRAWING NO. EDC4-112328-71		PART NO. RM12BPE-5S(71)				
SACLE 2 : 1		CODE NO. CL109-0426-8-71				1/1
UNITS mm		HRS HIROSE ELECTRIC CO., LTD.				FORM NO. 228

In case of consideration for using Automotive equipment / device which demand high reliability, kindly contact our sales window correspondents.



Mouser Electronics

Authorized Distributor

Click to View Pricing, Inventory, Delivery & Lifecycle Information:

[Hirose Electric:](#)

[RM12BPE-5S\(71\)](#)