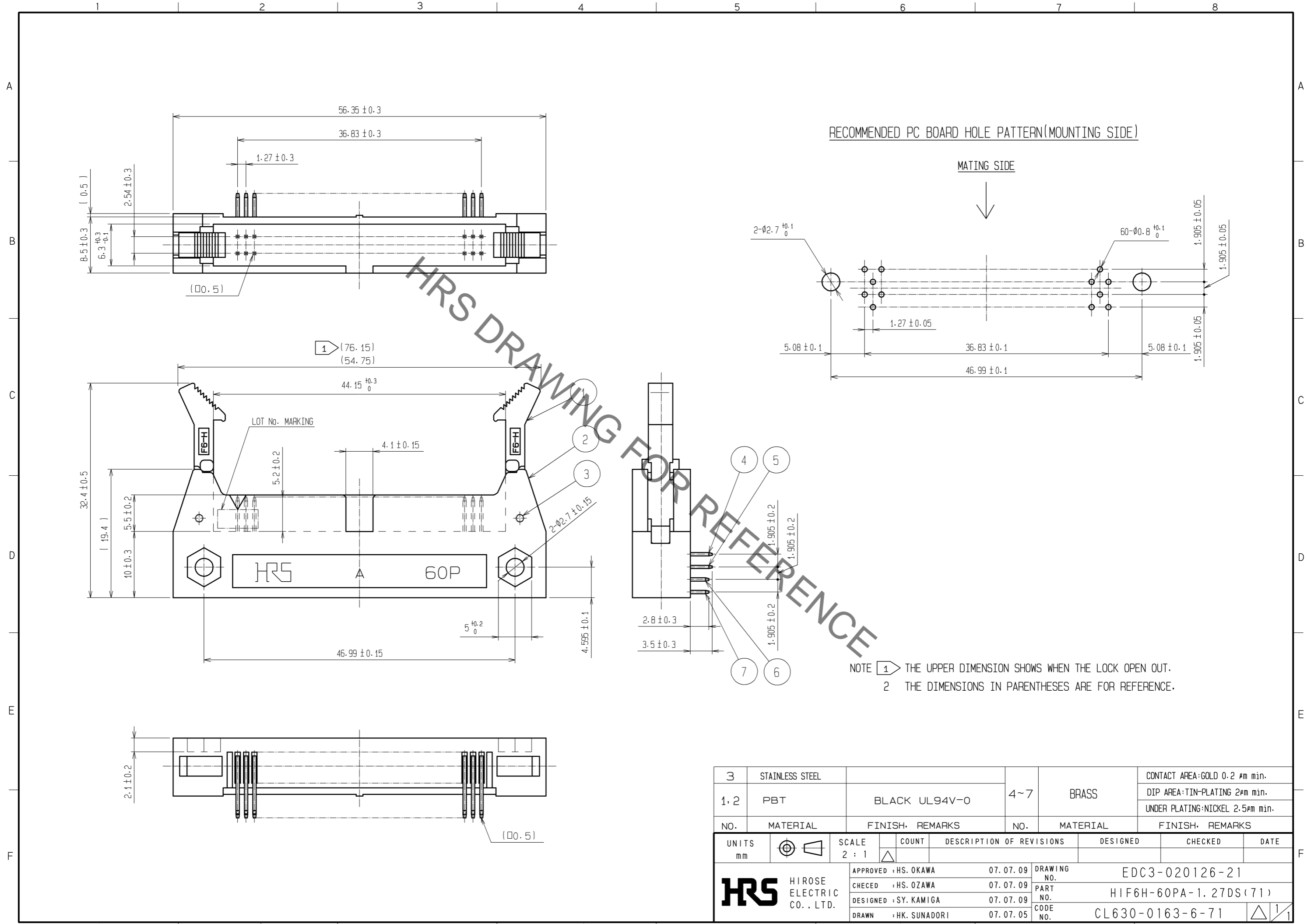


Sep.1.2021 Copyright 2021 HIROSE ELECTRIC CO., LTD. All Rights Reserved.
In case of consideration for using Automotive equipment / device which demand high reliability, kindly contact our sales window correspondents.



RECOMMENDED PC BOARD HOLE PATTERN(MOUNTING SIDE)

MATING SIDE

NOTE 1 THE UPPER DIMENSION SHOWS WHEN THE LOCK OPEN OUT.
2 THE DIMENSIONS IN PARENTHESSES ARE FOR REFERENCE.

3	STAINLESS STEEL			4~7	BRASS	CONTACT AREA:GOLD 0.2 μm min.
1, 2	PBT	BLACK UL94V-0				DIP AREA:TIN-PLATING 2μm min.
						UNDER PLATING:NICKEL 2.5μm min.
NO.	MATERIAL	FINISH, REMARKS	NO.	MATERIAL	FINISH, REMARKS	
UNITS		SCALE	COUNT	DESCRIPTION OF REVISIONS		DESIGNED
mm		2 : 1				CHECKED
HRS HIROSE ELECTRIC CO., LTD.		APPROVED : HS. OKAWA	07.07.09	DRAWING NO. EDC3-020126-21		DATE
		CHECED : HS. OZAWA	07.07.09	PART NO. HIF6H-60PA-1.27DS(71)		
		DESIGNED : SY. KAMIGA	07.07.09	CODE NO. CL630-0163-6-71		
		DRAWN : HK. SUNADORI	07.07.05			

Mouser Electronics

Authorized Distributor

Click to View Pricing, Inventory, Delivery & Lifecycle Information:

[Hirose Electric:](#)

[HIF6H-60PA-1.27DS\(71\)](#)