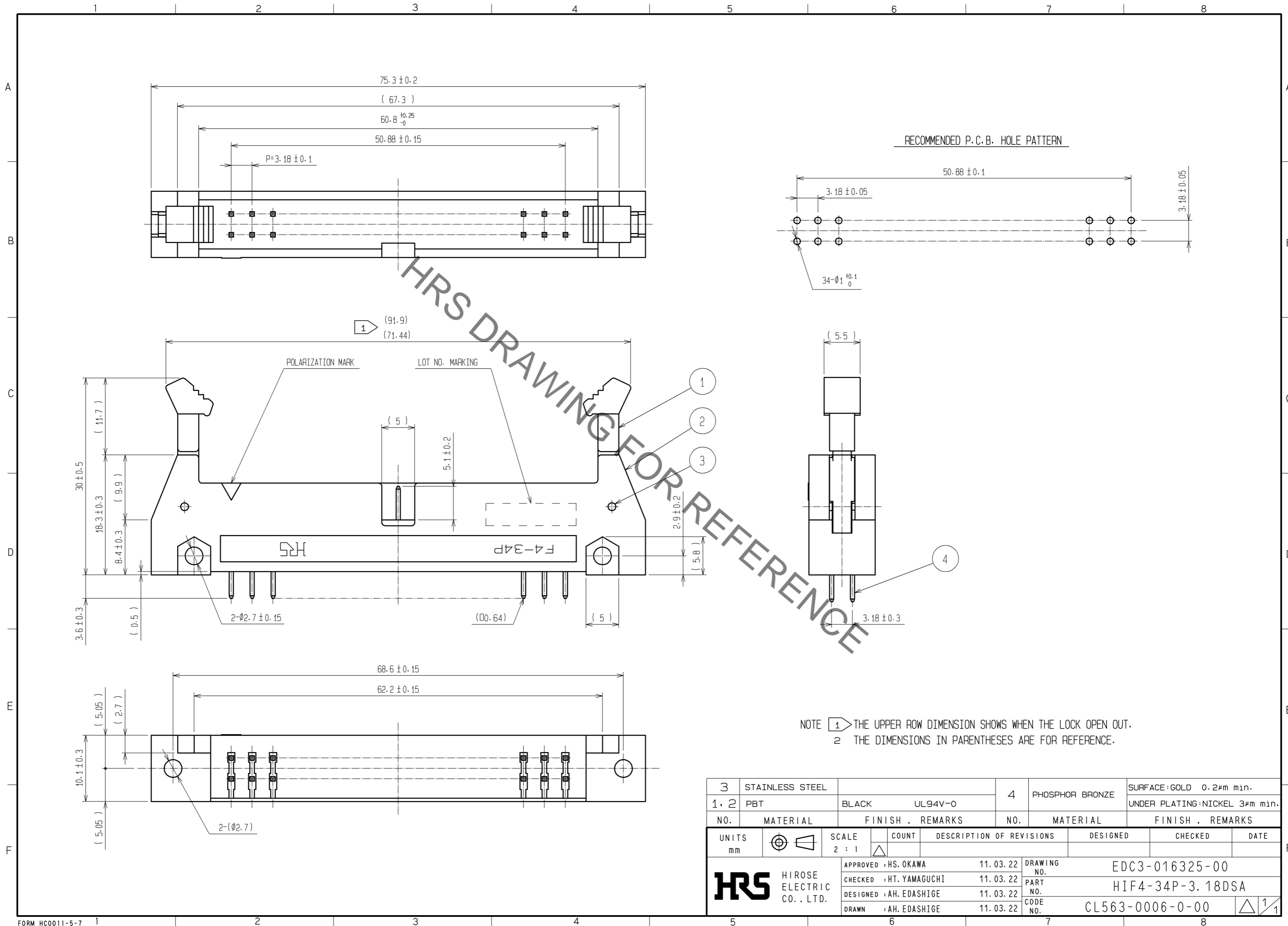


Sep.1.2021 Copyright 2021 HIROSE ELECTRIC CO., LTD. All Rights Reserved.
In case of consideration for using Automotive equipment / device which demand high reliability, kindly contact our sales window correspondents.



NOTE ① THE UPPER ROW DIMENSION SHOWS WHEN THE LOCK OPEN OUT.
② THE DIMENSIONS IN PARENTHESES ARE FOR REFERENCE.

3	STAINLESS STEEL		4	PHOSPHOR BRONZE	SURFACE:GOLD 0.2#m min.				
1, 2	PBT	BLACK	UL94V-0		UNDER PLATING:NICKEL 3#m min.				
NO.	MATERIAL	FINISH	REMARKS	NO.	MATERIAL	FINISH	REMARKS		
UNITS	mm	SCALE	2 : 1	COUNT	DESCRIPTION OF REVISIONS		DESIGNED	CHECKED	DATE
HRS HIROSE ELECTRIC CO., LTD.		APPROVED	: HS. OKAWA	11.03.22	DRAWING NO.		EDC3-016325-00		
		CHECKED	: HT. YAMAGUCHI	11.03.22	PART NO.		HIF4-34P-3.18DSA		
		DESIGNED	: AH. EDASHIGE	11.03.22	CODE NO.		CL563-0006-0-00		
		DRAWN	: AH. EDASHIGE	11.03.22			1/1		

Mouser Electronics

Authorized Distributor

Click to View Pricing, Inventory, Delivery & Lifecycle Information:

[Hirose Electric:](#)

[HIF4-34P-3.18DSA](#)