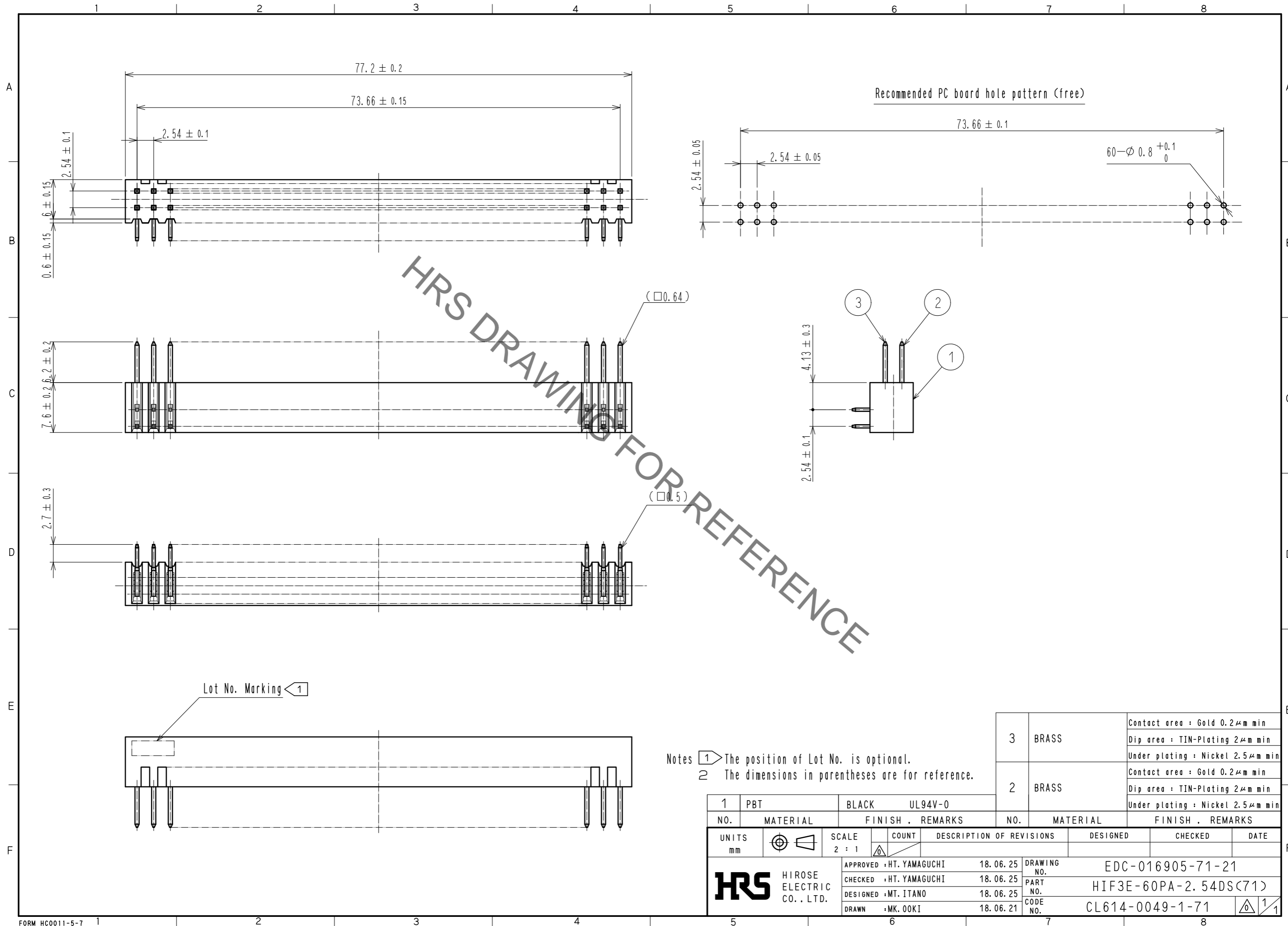


Sep.1.2021 Copyright 2021 HIROSE ELECTRIC CO., LTD. All Rights Reserved.
In case of consideration for using Automotive equipment / device which demand high reliability, kindly contact our sales window correspondents.



HRS DRAWING FOR REFERENCE

- Notes
- 1 The position of Lot No. is optional.
 - 2 The dimensions in parentheses are for reference.

3	BRASS	Contact area : Gold 0.2 μ m min Dip area : TIN-Plating 2 μ m min Under plating : Nickel 2.5 μ m min
	2	BRASS

1	PBT	BLACK	UL94V-0	NO.	MATERIAL	FINISH .	REMARKS	NO.	MATERIAL	FINISH .	REMARKS
UNITS	mm	SCALE	2 : 1	COUNT	DESCRIPTION OF REVISIONS			DESIGNED	CHECKED	DATE	
APPROVED : HT. YAMAGUCHI				18.06.25	DRAWING NO.			EDC-016905-71-21			
CHECKED : HT. YAMAGUCHI				18.06.25	PART NO.			HIF3E-60PA-2.54DS(71)			
DESIGNED : MT. ITANO				18.06.25	CODE NO.			CL614-0049-1-71			
DRAWN : MK. OOKI				18.06.21							

Mouser Electronics

Authorized Distributor

Click to View Pricing, Inventory, Delivery & Lifecycle Information:

[Hirose Electric:](#)

[HIF3E-60PA-2.54DS\(71\)](#)