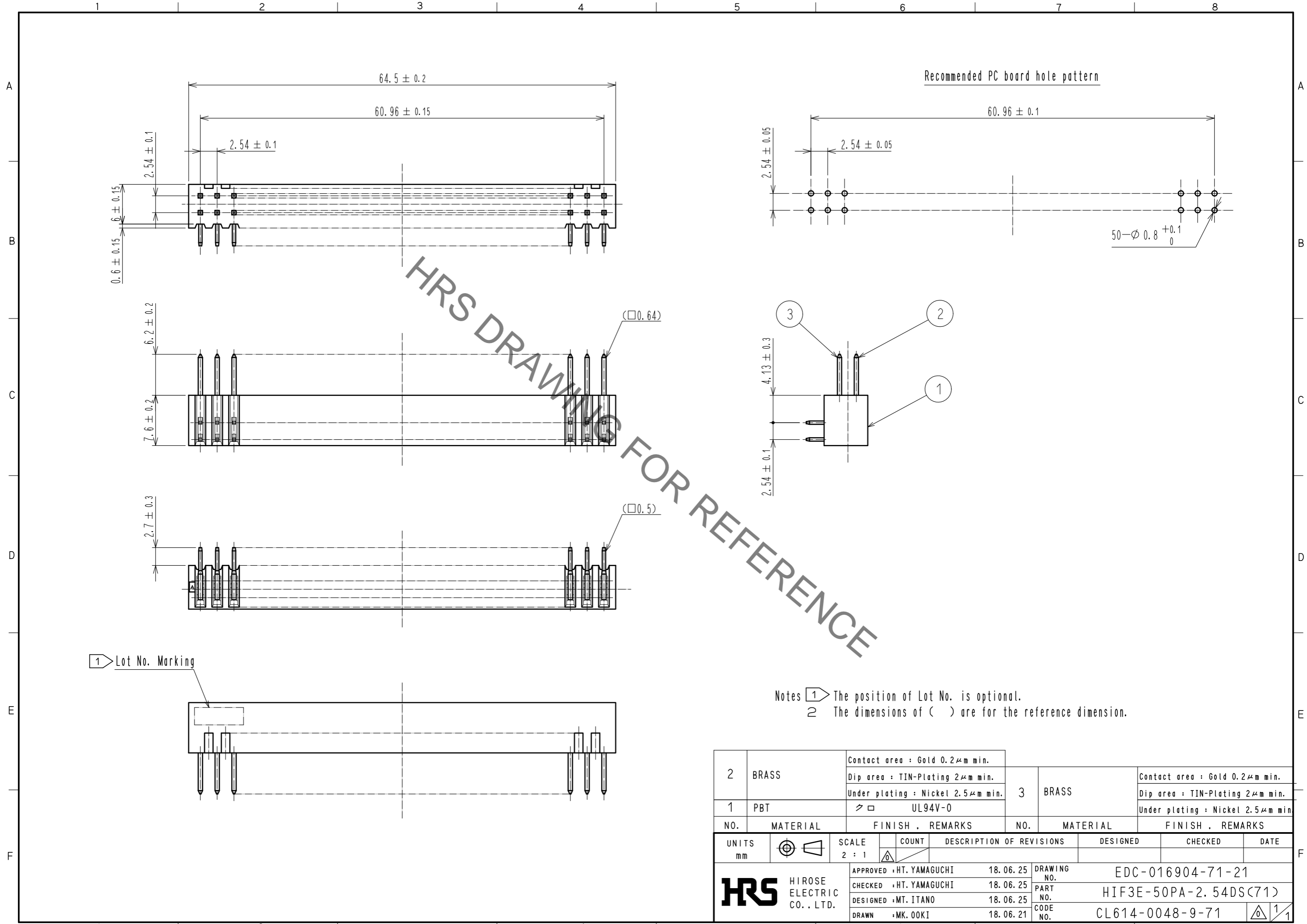


Sep.1.2021 Copyright 2021 HIROSE ELECTRIC CO., LTD. All Rights Reserved.  
In case of consideration for using Automotive equipment / device which demand high reliability, kindly contact our sales window correspondents.



1 Lot No. Marking

2	BRASS	Contact area : Gold 0.2 $\mu$ m min. Dip area : TIN-Plating 2 $\mu$ m min. Under plating : Nickel 2.5 $\mu$ m min.	3	BRASS	Contact area : Gold 0.2 $\mu$ m min. Dip area : TIN-Plating 2 $\mu$ m min. Under plating : Nickel 2.5 $\mu$ m min.
1	PBT	UL94V-0			
NO.	MATERIAL	FINISH . REMARKS	NO.	MATERIAL	FINISH . REMARKS
UNITS		SCALE	COUNT	DESCRIPTION OF REVISIONS	
mm		2 : 1		DESIGNED	CHECKED
<b>HRS</b> HIROSE ELECTRIC CO., LTD.		APPROVED : HT. YAMAGUCHI	18.06.25	DRAWING NO. EDC-016904-71-21	
		CHECKED : HT. YAMAGUCHI	18.06.25	PART NO. HIF3E-50PA-2.54DS(71)	
		DESIGNED : MT. ITANO	18.06.25	CODE NO. CL614-0048-9-71	
		DRAWN : MK. OOKI	18.06.21		

# Mouser Electronics

Authorized Distributor

Click to View Pricing, Inventory, Delivery & Lifecycle Information:

[Hirose Electric:](#)

[HIF3E-50PA-2.54DS\(71\)](#)