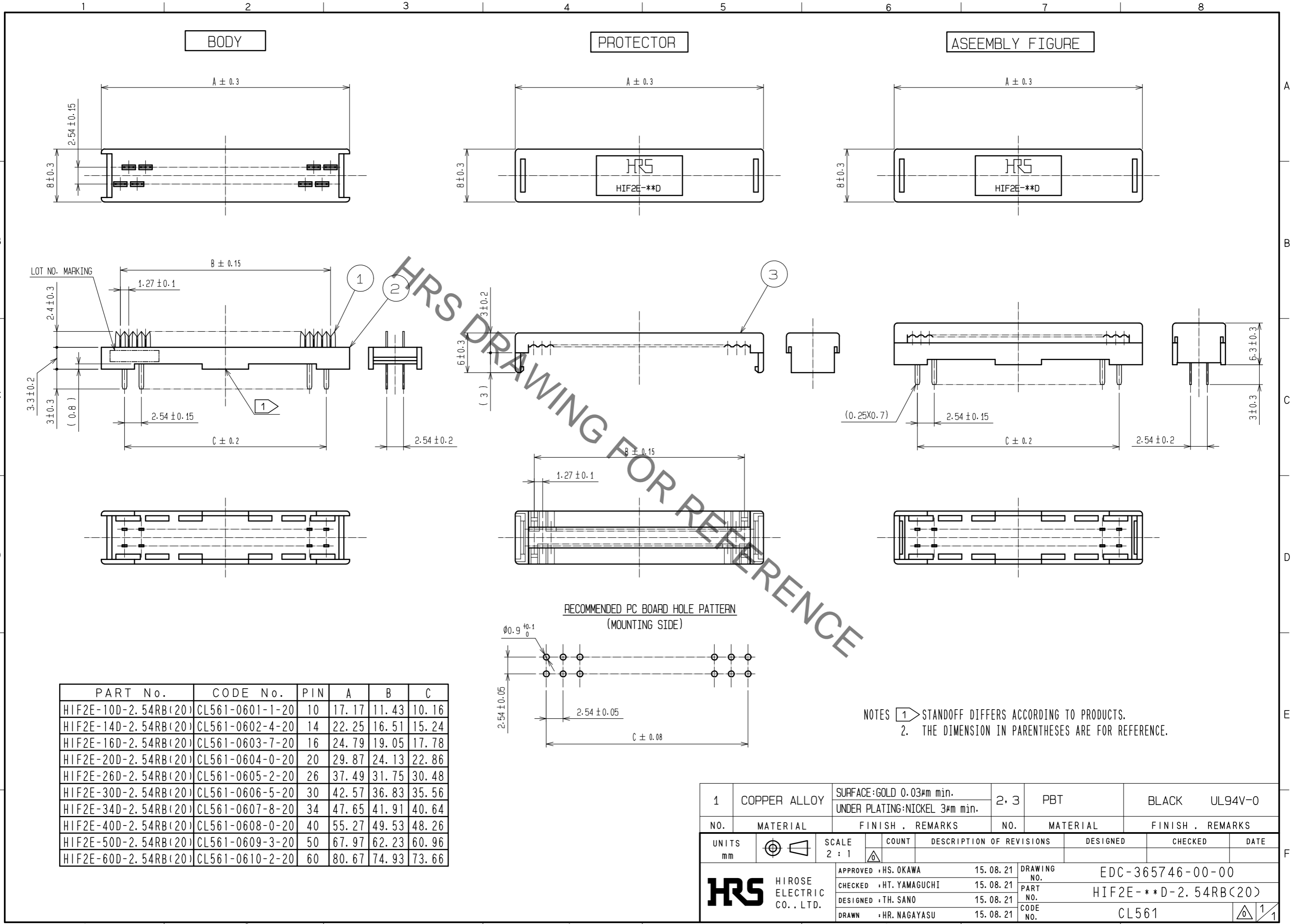
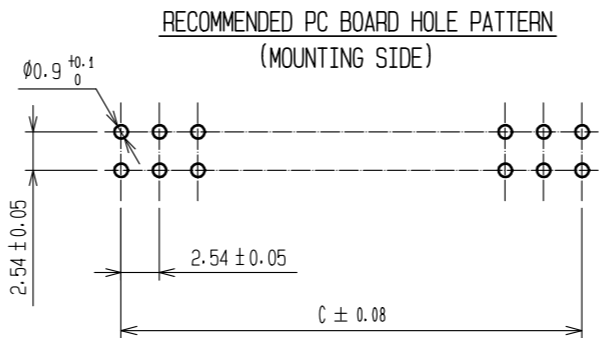


Aug.1.2021 Copyright 2021 HIROSE ELECTRIC CO., LTD. All Rights Reserved.
In case of consideration for using Automotive equipment / device which demand high reliability, kindly contact our sales window correspondents.



PART No.	CODE No.	PIN	A	B	C
HIF2E-10D-2.54RB(20)	CL561-0601-1-20	10	17.17	11.43	10.16
HIF2E-14D-2.54RB(20)	CL561-0602-4-20	14	22.25	16.51	15.24
HIF2E-16D-2.54RB(20)	CL561-0603-7-20	16	24.79	19.05	17.78
HIF2E-20D-2.54RB(20)	CL561-0604-0-20	20	29.87	24.13	22.86
HIF2E-26D-2.54RB(20)	CL561-0605-2-20	26	37.49	31.75	30.48
HIF2E-30D-2.54RB(20)	CL561-0606-5-20	30	42.57	36.83	35.56
HIF2E-34D-2.54RB(20)	CL561-0607-8-20	34	47.65	41.91	40.64
HIF2E-40D-2.54RB(20)	CL561-0608-0-20	40	55.27	49.53	48.26
HIF2E-50D-2.54RB(20)	CL561-0609-3-20	50	67.97	62.23	60.96
HIF2E-60D-2.54RB(20)	CL561-0610-2-20	60	80.67	74.93	73.66



NOTES 1. STANDOFF DIFFERS ACCORDING TO PRODUCTS.
2. THE DIMENSION IN PARENTHESES ARE FOR REFERENCE.

1	COPPER ALLOY	SURFACE:GOLD 0.03µm min. UNDER PLATING:NICKEL 3µm min.	2, 3	PBT	BLACK	UL94V-0			
NO.	MATERIAL	FINISH . REMARKS	NO.	MATERIAL	FINISH . REMARKS				
UNITS mm		SCALE 2 : 1	COUNT 	DESCRIPTION OF REVISIONS			DESIGNED	CHECKED	DATE
HRS HIROSE ELECTRIC CO., LTD.		APPROVED : HS. OKAWA	15.08.21	DRAWING NO. EDC-365746-00-00					
		CHECKED : HT. YAMAGUCHI	15.08.21	PART NO. HIF2E-**-D-2.54RB(20)					
		DESIGNED : TH. SANO	15.08.21	CODE NO. CL561					
		DRAWN : HR. NAGAYASU	15.08.21						

Mouser Electronics

Authorized Distributor

Click to View Pricing, Inventory, Delivery & Lifecycle Information:

[Hirose Electric:](#)

[HIF2E-26D-2.54RB\(20\)](#)