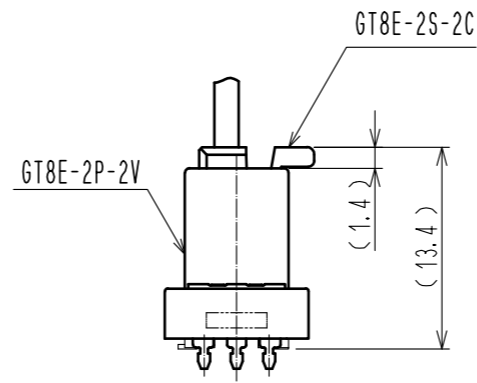
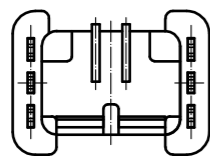
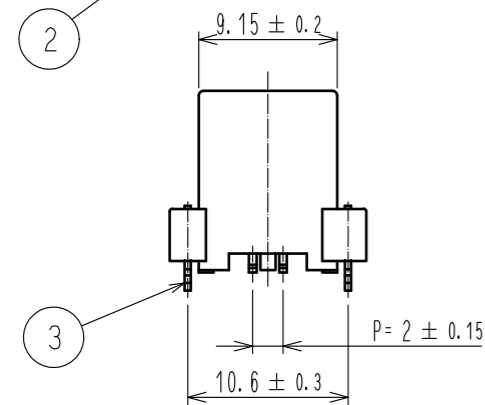
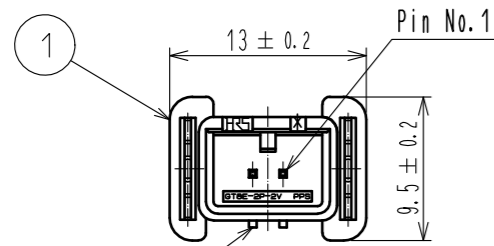
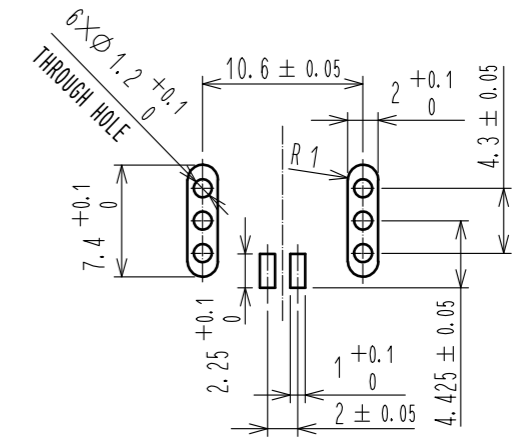


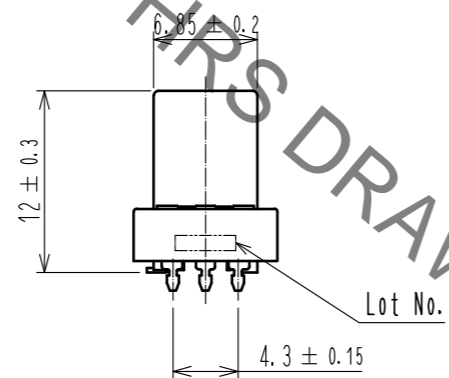
ELV. RoHS COMPLIANT



MATED CONNECTORS



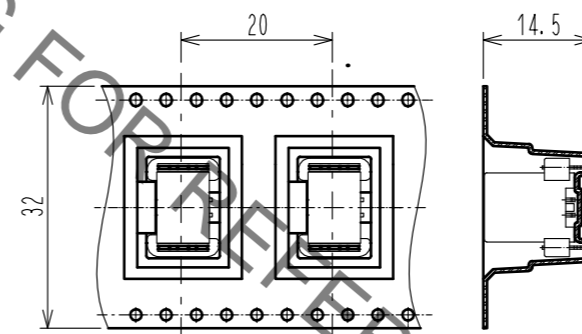
RECOMMENDED PC BOARD PATTERN (CONNECTOR SIDE)



PACKING STYLE

1. PLACE CONNECTORS INTO ON EMBOSSED CARRIER TAPE.

← DIRECTION OF UNREELING

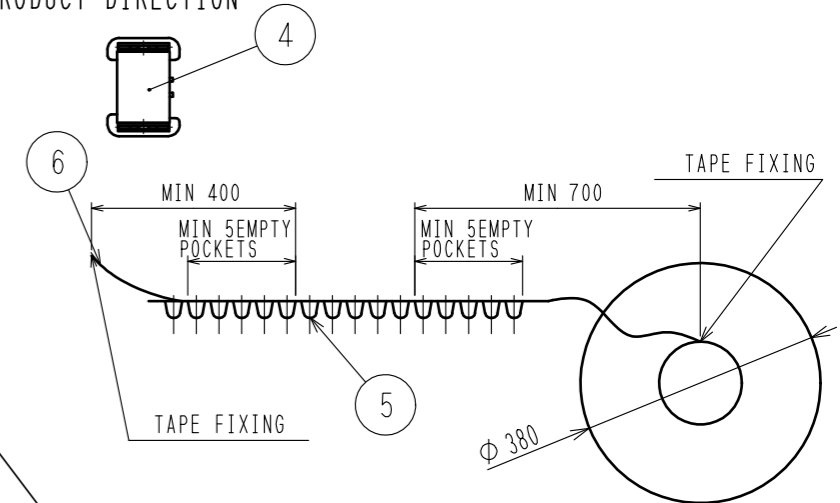


2. PUT A REEL INTO CARDBOARD.

W = (405) (mm)  
D = (405) (mm)  
H = (39) (mm)

REMOVE THE VACUUM PICK-UP TAPE AFTER MOUNTING THE CONNECTOR

PRODUCT DIRECTION



300 PCS/REEL

NOTE1. RECOMMENDED TEMPERATURE PROFILE FOR REFLOW (REFER RIGHT FIG.).

REFLOW HEATING: FAR-INFLARED, IN THE AIR OR NITROGEN

REFLOW No. : MAX 2 TIMES

PEAK TEMPERATURE : 250°C

ABOVE 230°C : 20~40s

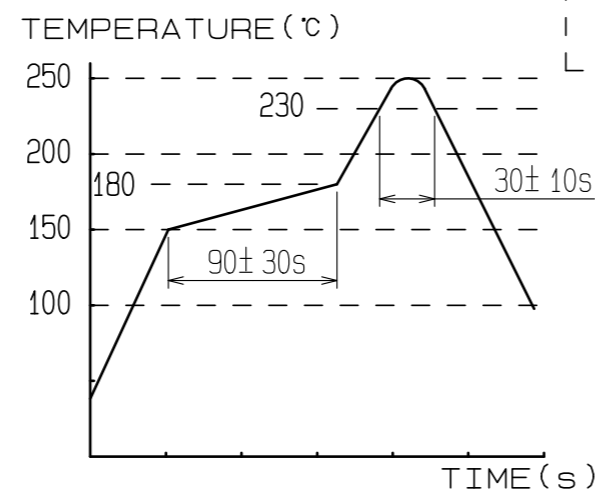
PREHEAT : 150~180°C (60~120s)

2. SOLDERING TEMPERATURE : 280~300°C (MAX 2s)

3. COPLANARITY OF LEADS SHALL BE UNDER 0.1mm.

4. RECOMMENDED THICKNESS FOR PC BOARD IS 1.6mm.

5. RECOMMENDED THICKNESS FOR SOLDER PASTE IS 0.15mm.



3	BRASS	TIN PLATING	6	POLYESTER	(COVER TAPE)
2	BRASS	TIN PLATING	5	PS	(EMBOSSED CARRIER TAPE)
1	PPS	BLACK	4	POLYIMIDE	(VACUUM PICK-UP TAPE)
NO.	MATERIAL	FINISH . REMARKS	NO.	MATERIAL	FINISH . REMARKS
UNITS mm		SCALE 2 : 1	COUNT	DESCRIPTION OF REVISIONS	
DESIGNED		CHECKED		DATE	
APPROVED : HK. UMEHARA 20200322			DRAWING NO. EDC-168150-55-00		
CHECKED : HH. TSUKUMO 20200321			PART NO. GT8E-2P-2V(55)		
DESIGNED : DONGCHAN KIM 20200318			CODE NO. CL758-0202-0-55		
DRAWN : YK. MITSUISHI 20200318			1/1		

# Mouser Electronics

Authorized Distributor

Click to View Pricing, Inventory, Delivery & Lifecycle Information:

[Hirose Electric:](#)

[GT8E-2P-2V\(55\)](#)