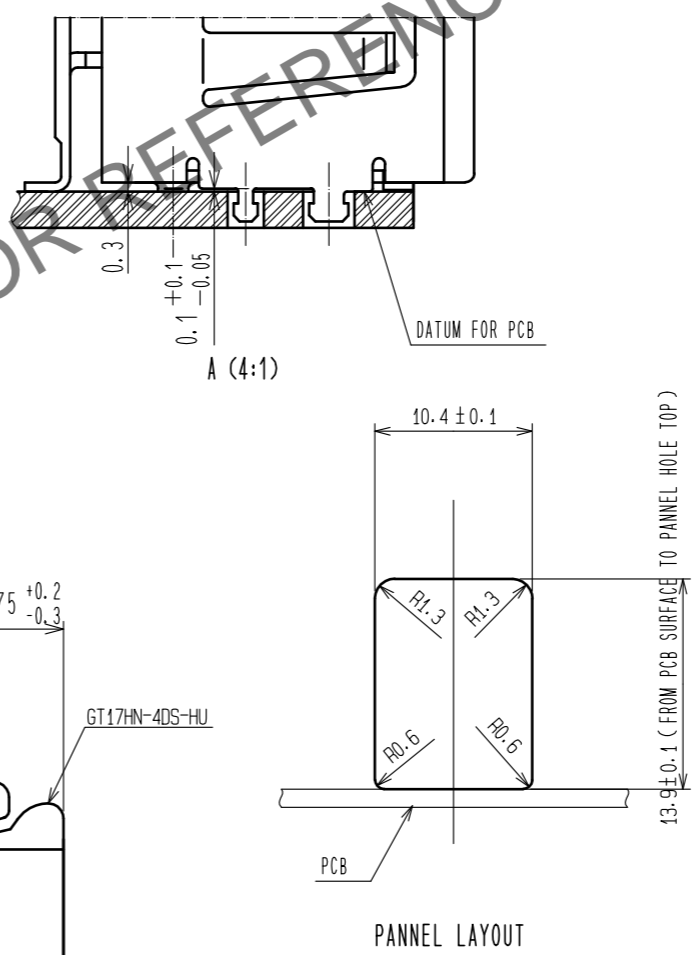
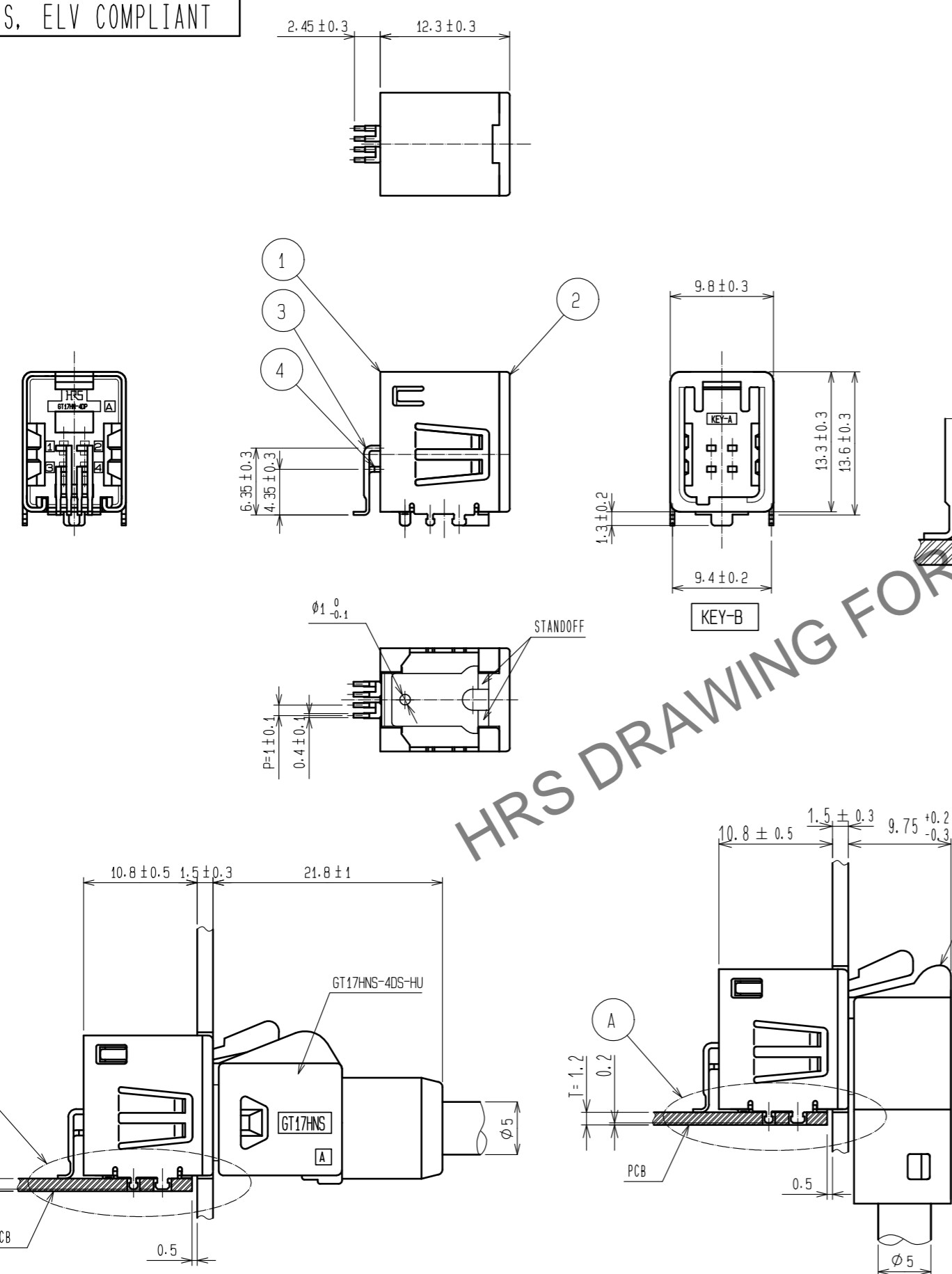
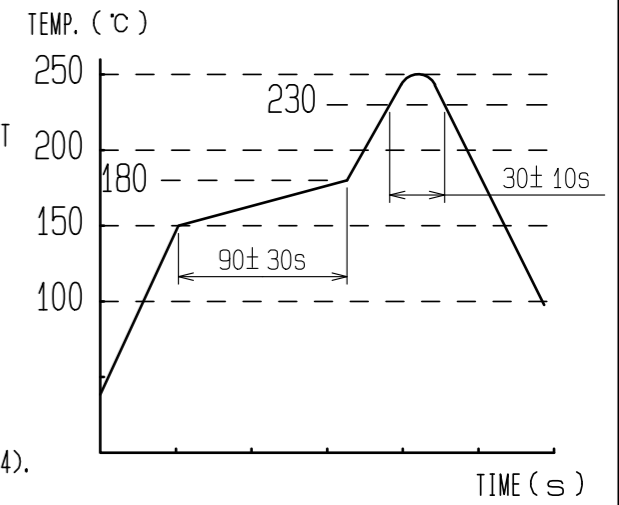


May.1.2024 Copyright 2024 HIROSE ELECTRIC CO., LTD. All Rights Reserved.  
In case of consideration for using Automotive equipment / device which demand high reliability, kindly contact our sales window correspondents.

RoHS, ELV COMPLIANT

NOTES

- 1) RECOMMENDED REFLOW PROFILE (SEE RIGHT GRAPH)  
CYCLE TIME: UP TO 2 CYCLES OF REFLOW SOLDERING ARE POSSIBLE UNDER THE CONDITIONS, PROVIDED THAT THERE IS A RETURN TO NORMAL TEMPERATURE BETWEEN THE FIRST AND SECOND CYCLE.  
PEAK TEMPERATURE: 250°C  
230°C MIN. FOR 20 TO 40 SECONDS.  
PREHEATING AREA 150 TO 180 °C FOR 60 TO 120 SECONDS.
- 2) HAND SOLDERING: 280-300°C, 2S MAX.
- 3) CONTACT COPLANARITY: 0.1mm MAX.
- 4) RECOMMENDED THICKNESS OF PCB: 1.2mm
- 5) RECOMMENDED THICKNESS OF SOLDERING PASTE: 0.12mm
- 6) THIS PRODUCT CAN REPLACE CL767-0144-6-14 GT17HN-4DP-2H(A)(14).

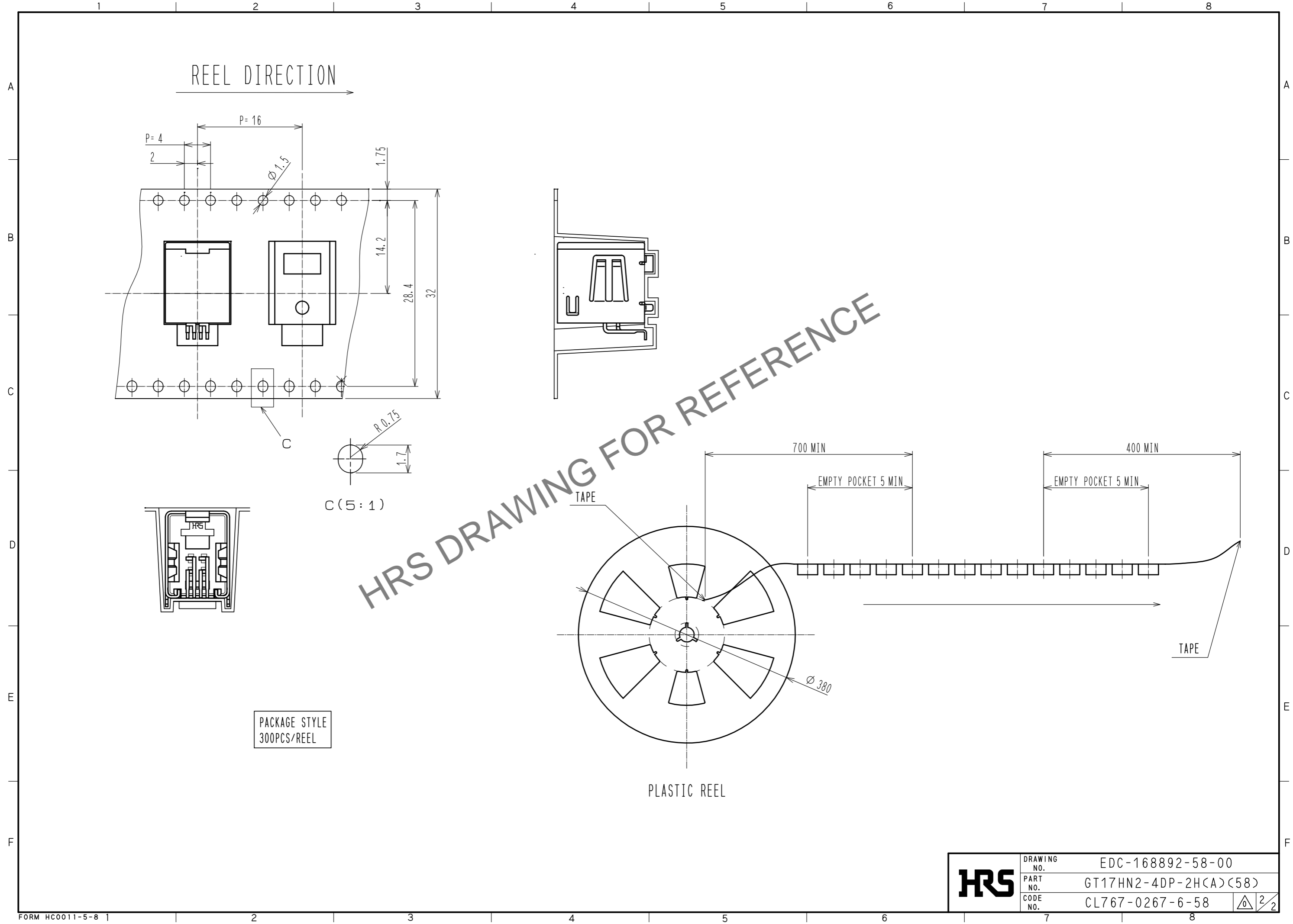


IN COMBINATION WITH STRAIGHT CONNECTOR

IN COMBINATION WITH RIGHT-ANGLE CONNECTOR

2	PA	BROWN	4	BRASS	TIN PLATING
1	COPPER ALLOY	TIN PLATING	3	BRASS	TIN PLATING
NO.	MATERIAL	FINISH . REMARKS	NO.	MATERIAL	FINISH . REMARKS
UNITS	mm	SCALE	2 : 1	COUNT	DESCRIPTION OF REVISIONS
		APPROVED	: KI. HIROKAWA	20200409	DESIGNED
		CHECKED	: E.J. WAKATSUKI	20200408	CHECKED
		DESIGNED	: TS. KUBOTA	20200325	DATE
		DRAWN	: YK. MITSUISHI	20200319	
HIROSE ELECTRIC CO., LTD.			DRAWING NO. EDC-168892-58-00 PART NO. GT17HN2-4DP-2H(A)(58) CODE NO. CL767-0267-6-58		

May.1.2024 Copyright 2024 HIROSE ELECTRIC CO., LTD. All Rights Reserved.  
 In case of consideration for using Automotive equipment / device which demand high reliability, kindly contact our sales window correspondents.



PACKAGE STYLE  
300PCS/REEL

<b>HRS</b>	DRAWING NO.	EDC-168892-58-00
	PART NO.	GT17HN2-4DP-2H(A)(58)
	CODE NO.	CL767-0267-6-58
		2/2

# Mouser Electronics

Authorized Distributor

Click to View Pricing, Inventory, Delivery & Lifecycle Information:

[Hirose Electric:](#)

[GT17HN2-4DP-2H\(A\)\(58\)](#)