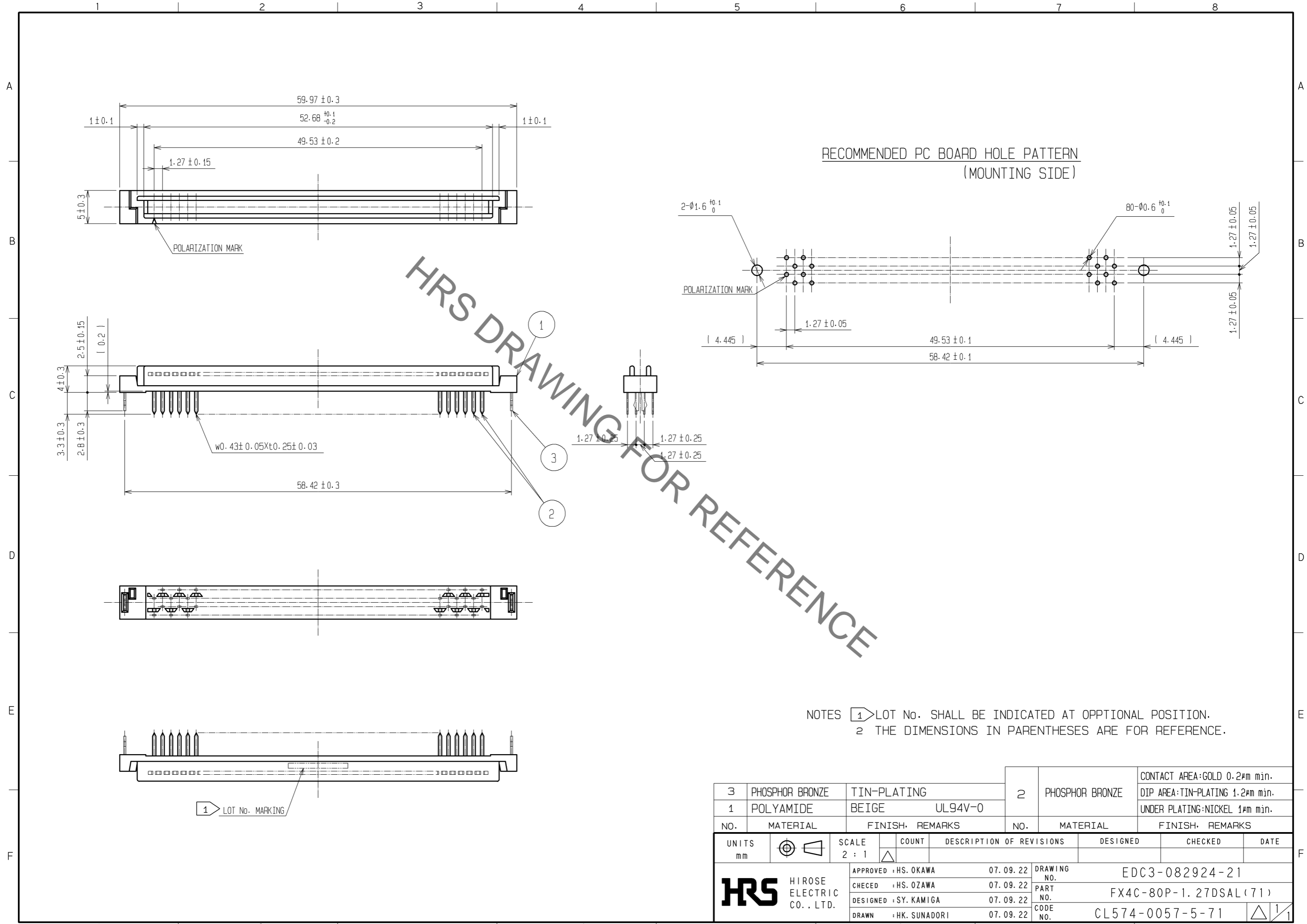


Sep.1.2021 Copyright 2021 HIROSE ELECTRIC CO., LTD. All Rights Reserved.
In case of consideration for using Automotive equipment / device which demand high reliability, kindly contact our sales window correspondents.



HRS DRAWING FOR REFERENCE

NOTES 1 LOT No. SHALL BE INDICATED AT OPPTIONAL POSITION.
2 THE DIMENSIONS IN PARENTHESSES ARE FOR REFERENCE.

3	PHOSPHOR BRONZE	TIN-PLATING	2	PHOSPHOR BRONZE	CONTACT AREA:GOLD 0.2#m min.		
1	POLYAMIDE	BEIGE UL94V-0			DIP AREA:TIN-PLATING 1.2#m min.		
					UNDER PLATING:NICKEL 1#m min.		
NO.	MATERIAL	FINISH, REMARKS	NO.	MATERIAL	FINISH, REMARKS		
UNITS	⊕	SCALE	COUNT	DESCRIPTION OF REVISIONS	DESIGNED	CHECKED	DATE
mm		2 : 1	△				
HRS HIROSE ELECTRIC CO., LTD.		APPROVED : HS. OKAWA	07.09.22	DRAWING NO.	EDC3-082924-21		
		CHECED : HS. OZAWA	07.09.22	PART NO.	FX4C-80P-1.27DSAL(71)		
		DESIGNED : SY. KAMIGA	07.09.22	CODE NO.	CL574-0057-5-71		
		DRAWN : HK. SUNADORI	07.09.22		△ 1/1		

Mouser Electronics

Authorized Distributor

Click to View Pricing, Inventory, Delivery & Lifecycle Information:

[Hirose Electric:](#)

[FX4C-80P-1.27DSAL\(71\)](#)