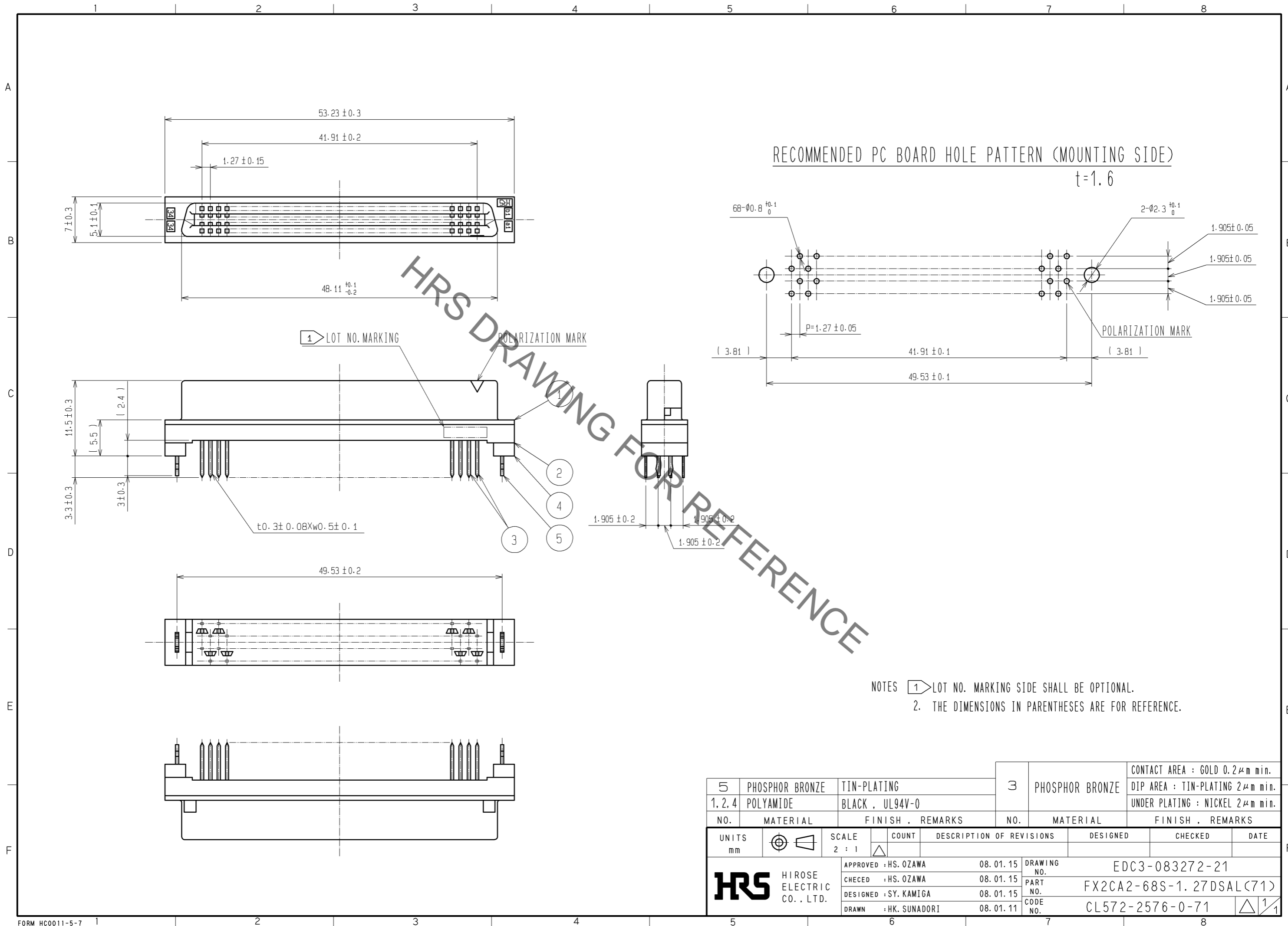


Sep.1.2021 Copyright 2021 HIROSE ELECTRIC CO., LTD. All Rights Reserved.
In case of consideration for using Automotive equipment / device which demand high reliability, kindly contact our sales window correspondents.



5	PHOSPHOR BRONZE	TIN-PLATING	3	PHOSPHOR BRONZE	CONTACT AREA : GOLD 0.2 μ m min. DIP AREA : TIN-PLATING 2 μ m min. UNDER PLATING : NICKEL 2 μ m min.		
1, 2, 4	POLYAMIDE	BLACK , UL94V-0					
NO.	MATERIAL	FINISH , REMARKS	NO.	MATERIAL	FINISH , REMARKS		
UNITS	\odot \triangleleft	SCALE	COUNT	DESCRIPTION OF REVISIONS	DESIGNED	CHECKED	DATE
mm		2 : 1	\triangle				
HRS HIROSE ELECTRIC CO., LTD.		APPROVED : HS. OZAWA	08.01.15	DRAWING NO. EDC3-083272-21			
		CHECED : HS. OZAWA	08.01.15	PART NO. FX2CA2-68S-1.27DSAL(71)			
		DESIGNED : SY. KAMIGA	08.01.15	CODE NO. CL572-2576-0-71			
		DRAWN : HK. SUNADORI	08.01.11				

Mouser Electronics

Authorized Distributor

Click to View Pricing, Inventory, Delivery & Lifecycle Information:

[Hirose Electric:](#)

[FX2CA2-68S-1.27DSAL\(71\)](#)