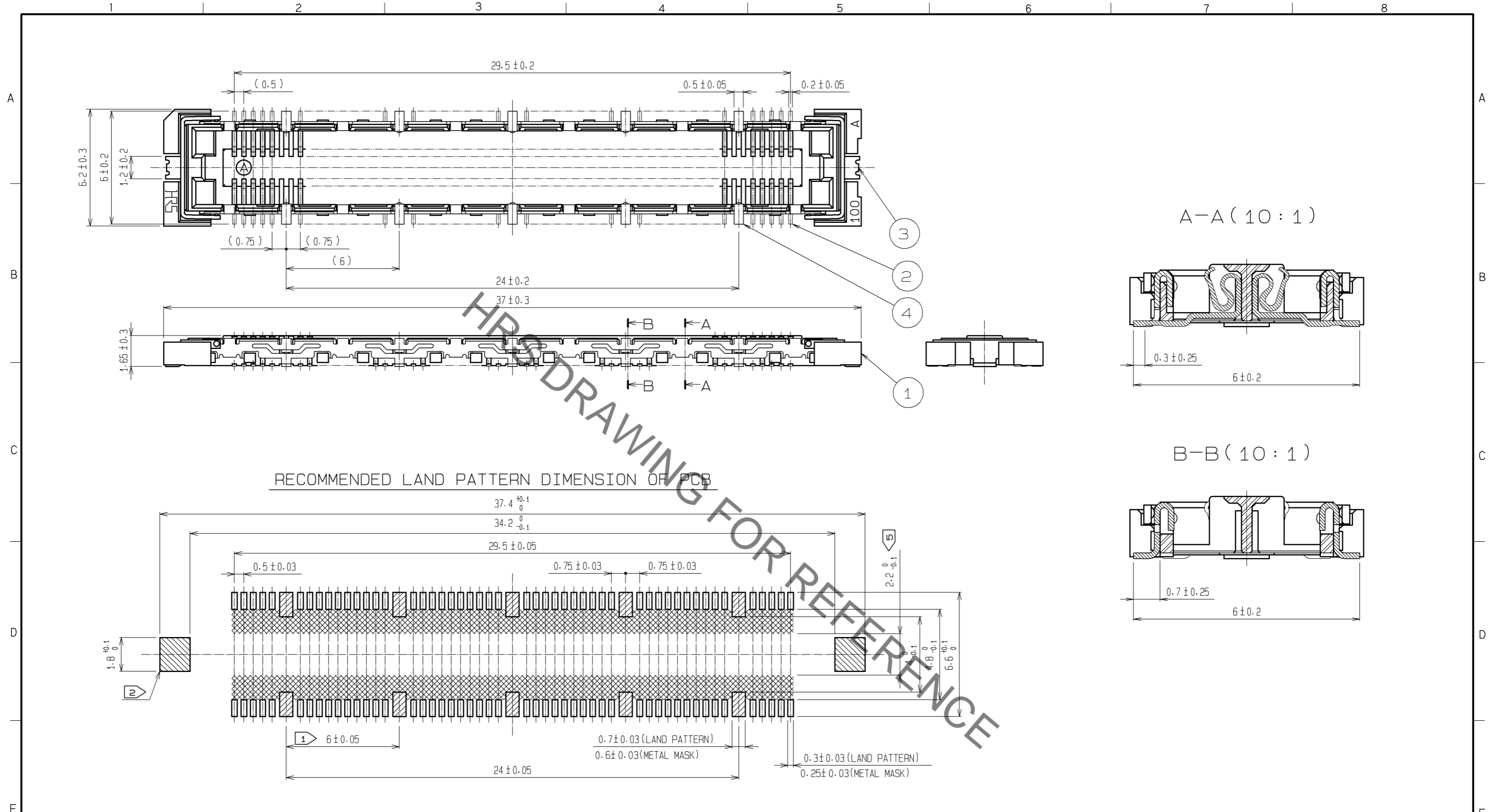


Sep.1.2021 Copyright 2021 HIROSE ELECTRIC CO., LTD. All Rights Reserved.
 In case of consideration for using Automotive equipment / device which demand high reliability, kindly contact our sales window correspondents.

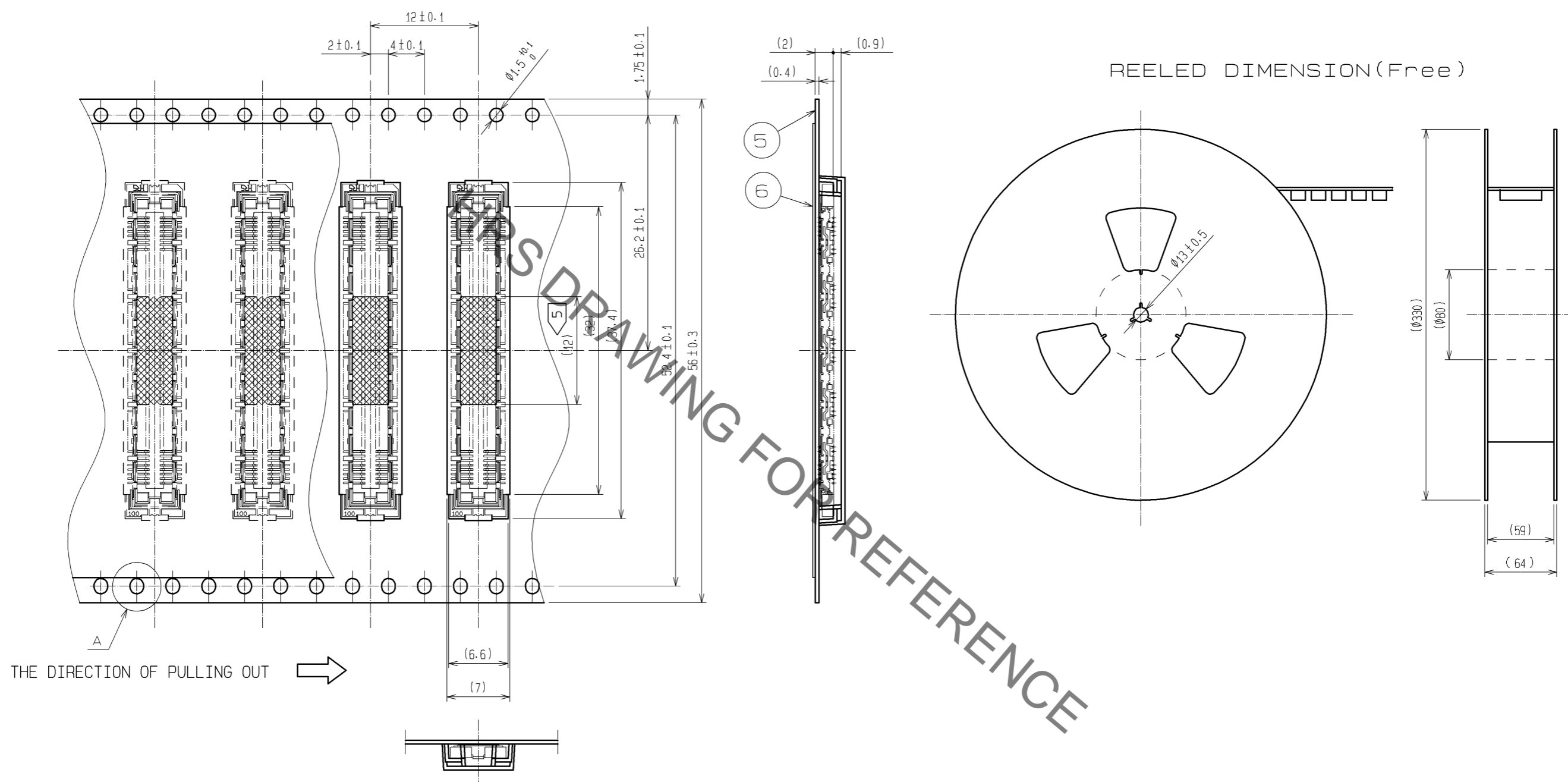


- NOTES
- ① 10 HATCHED PARTS: GROUND CIRCUIT.
 - ② 2 HATCHED PARTS: GROUND CIRCUIT.
 - ③ SMT LEAD-COPLANARITY: 0.1 MAX.
 - ④ THIS PRODUCT HAS NO POLARITY TO PATTERN FOR MOUNTING.
 - ⑤ MAKE SURE WIDTH OF PATTERN IS WITHIN THAT OF LAND .OR LEAD MAY TOUCH PATTERN. (THIS APPLIES TO HATCHED AREA.)
 - ⑥ TO BE EMBOSSED CARRIER TAPED AS SPECIFIED IN SHEET 2.
 - ⑦ THE DIMENSIONS IN PARENTHESES ARE FOR REFERENCE.

4	PHOSPHOR BRONZE	TIN PLATING						
3	PHOSPHOR BRONZE	TIN PLATING						
2	PHOSPHOR BRONZE	CONTACT AREA : GOLD 0.1μm min.	7	POLYIMIDE	(TAPE FOR VACUUM PICKUP)			
		LEAD AREA : GOLD FLASH		6	PET	(TOP COVER TAPE)		
		UNDER PLATING : NICKEL 1μm min.		5	PS	(EMBOSSED CARRIER TAPE)		
1	LCP	BEIGE UL94V-0						
NO.	MATERIAL	FINISH . REMARKS	NO.	MATERIAL	FINISH . REMARKS			
UNITS mm			SCALE 5 : 1	COUNT 	DESCRIPTION OF REVISIONS	DESIGNED	CHECKED	DATE
HRS HIROSE ELECTRIC CO., LTD.		APPROVED : HS. OKAWA	13.06.27	DRAWING NO. EDC3-152114-22				
		CHECKED : HT. YAMAGUCHI	13.06.27	PART NO. FX11LB-100S/10-SV(92)				
		DESIGNED : KJ. NISHIWAKI	13.06.27	CODE NO. CL573-0114-0-92				
		DRAWN : CR. TAKESHIMA	13.06.25					

Sep.1.2021 Copyright 2021 HIROSE ELECTRIC CO., LTD. All Rights Reserved.
 In case of consideration for using Automotive equipment / device which demand high reliability, kindly contact our sales window correspondents.

DRAWING FOR PACKING(2:1)



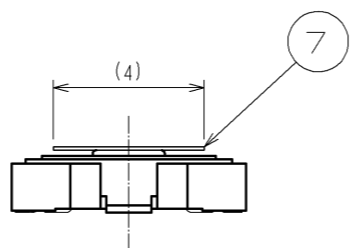
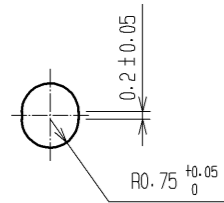
REELED DIMENSION(Free)

THE DIRECTION OF PULLING OUT →

DETAIL FOR TAPE PICKUP(5:1)

- NOTES
- 1 1REEL : 1000 CONNECTORS.
 - 2 MINIMUM 10 COMPARTMENTS FROM BOTH REEL ENDS REMAIN EMPTY.
 - 3 THIS PRODUCT HAS NO POLARITY TO TAPE AND REEL PACKAGING.
 - 4 THE DIMENSIONS IN PARENTHESES ARE FOR REFERENCE.
 - 5 REMOVE THE VACUUM PICKUP TAPE AFTER MOUNTING THE CONNECTOR.

A(5:1)



HRS	DRAWING NO.	EDC3-152114-22	△ 2/2
	PART NO.	FX11LB-100S/10-SV(92)	
	CODE NO.	CL573-0114-0-92	

Mouser Electronics

Authorized Distributor

Click to View Pricing, Inventory, Delivery & Lifecycle Information:

[Hirose Electric:](#)

[FX11LB-100S/10-SV\(92\)](#)