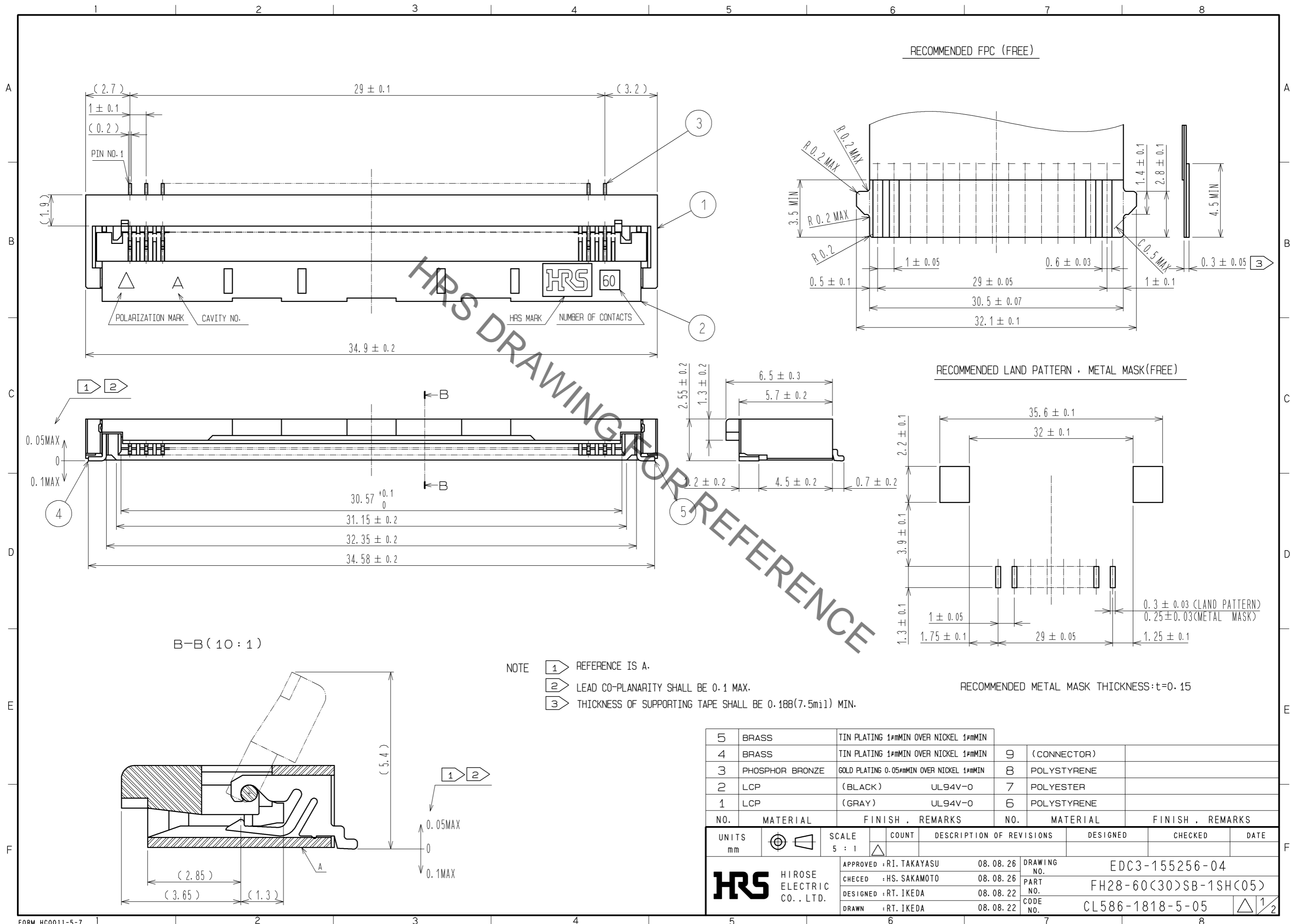


Sep.1.2021 Copyright 2021 HIROSE ELECTRIC CO., LTD. All Rights Reserved.
In case of consideration for using Automotive equipment / device which demand high reliability, kindly contact our sales window correspondents.

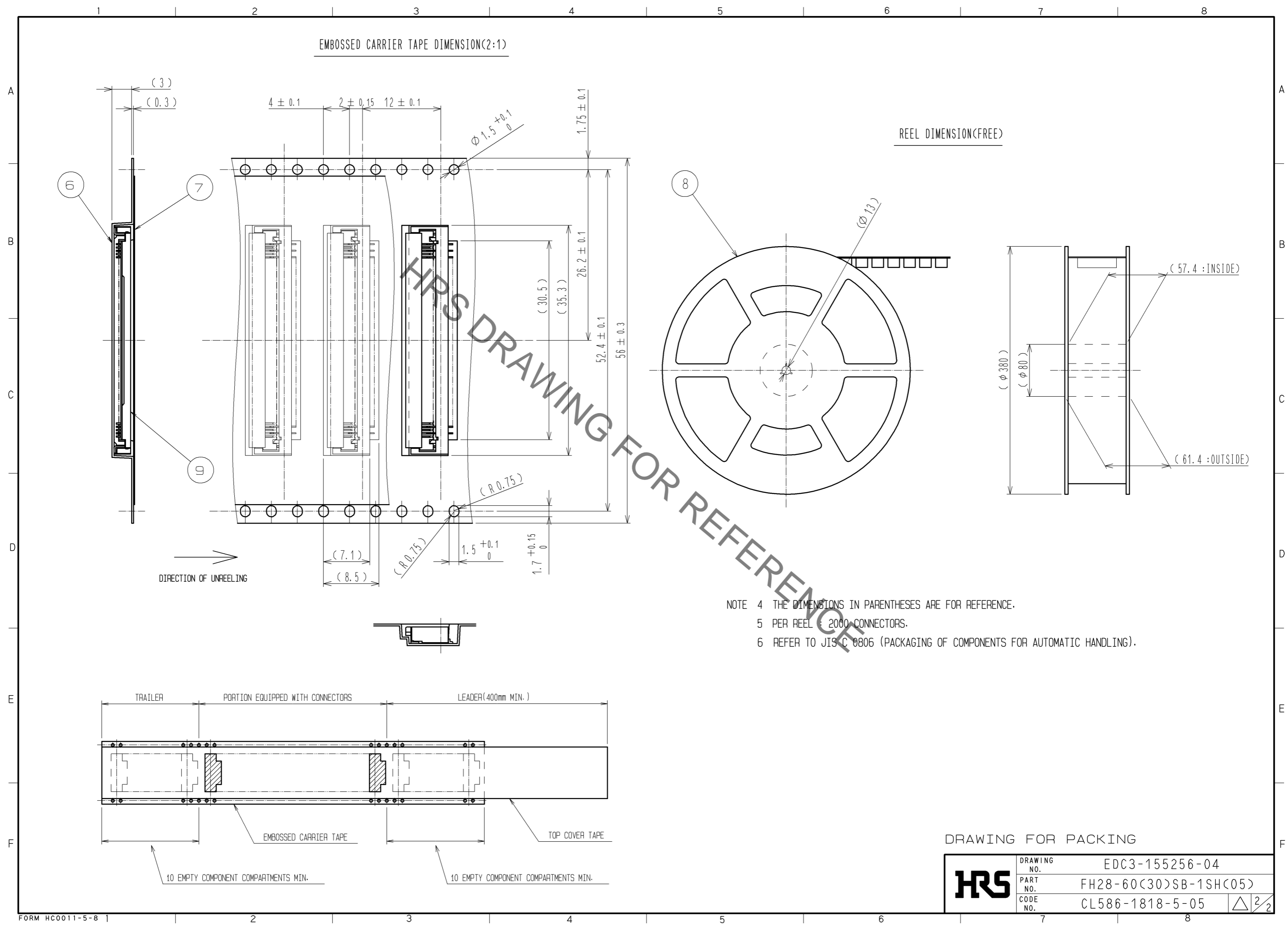


NO.	MATERIAL	FINISH .	REMARKS	NO.	MATERIAL	FINISH .	REMARKS
5	BRASS	TIN PLATING 1#mMIN OVER NICKEL 1#mMIN					
4	BRASS	TIN PLATING 1#mMIN OVER NICKEL 1#mMIN	9	(CONNECTOR)			
3	PHOSPHOR BRONZE	GOLD PLATING 0.05#mMIN OVER NICKEL 1#mMIN	8	POLYSTYRENE			
2	LCP	(BLACK)	UL94V-0	7	POLYESTER		
1	LCP	(GRAY)	UL94V-0	6	POLYSTYRENE		

UNITS	SCALE	COUNT	DESCRIPTION OF REVISIONS	DESIGNED	CHECKED	DATE
mm	5 : 1	△	APPROVED : RI. TAKAYASU 08.08.26			
			CHECED : HS. SAKAMOTO 08.08.26			
			DESIGNED : RT. IKEDA 08.08.22			
			DRAWN : RT. IKEDA 08.08.22			

DRAWING NO.	PART NO.	CODE NO.
EDC3-155256-04	FH28-60(30)SB-1SH(05)	CL586-1818-5-05

Sep.1.2021 Copyright 2021 HIROSE ELECTRIC CO., LTD. All Rights Reserved.
 In case of consideration for using Automotive equipment / device which demand high reliability, kindly contact our sales window correspondents.



- NOTE 4 THE DIMENSIONS IN PARENTHESES ARE FOR REFERENCE.
 5 PER REEL : 2000 CONNECTORS.
 6 REFER TO JIS C 0806 (PACKAGING OF COMPONENTS FOR AUTOMATIC HANDLING).

DRAWING FOR PACKING

HRS	DRAWING NO.	EDC3-155256-04	
	PART NO.	FH28-60(30)SB-1SH(C05)	
	CODE NO.	CL586-1818-5-05	△ 2/2

Mouser Electronics

Authorized Distributor

Click to View Pricing, Inventory, Delivery & Lifecycle Information:

[Hirose Electric:](#)

[FH28-60\(30\)SB-1SH\(05\)](#)