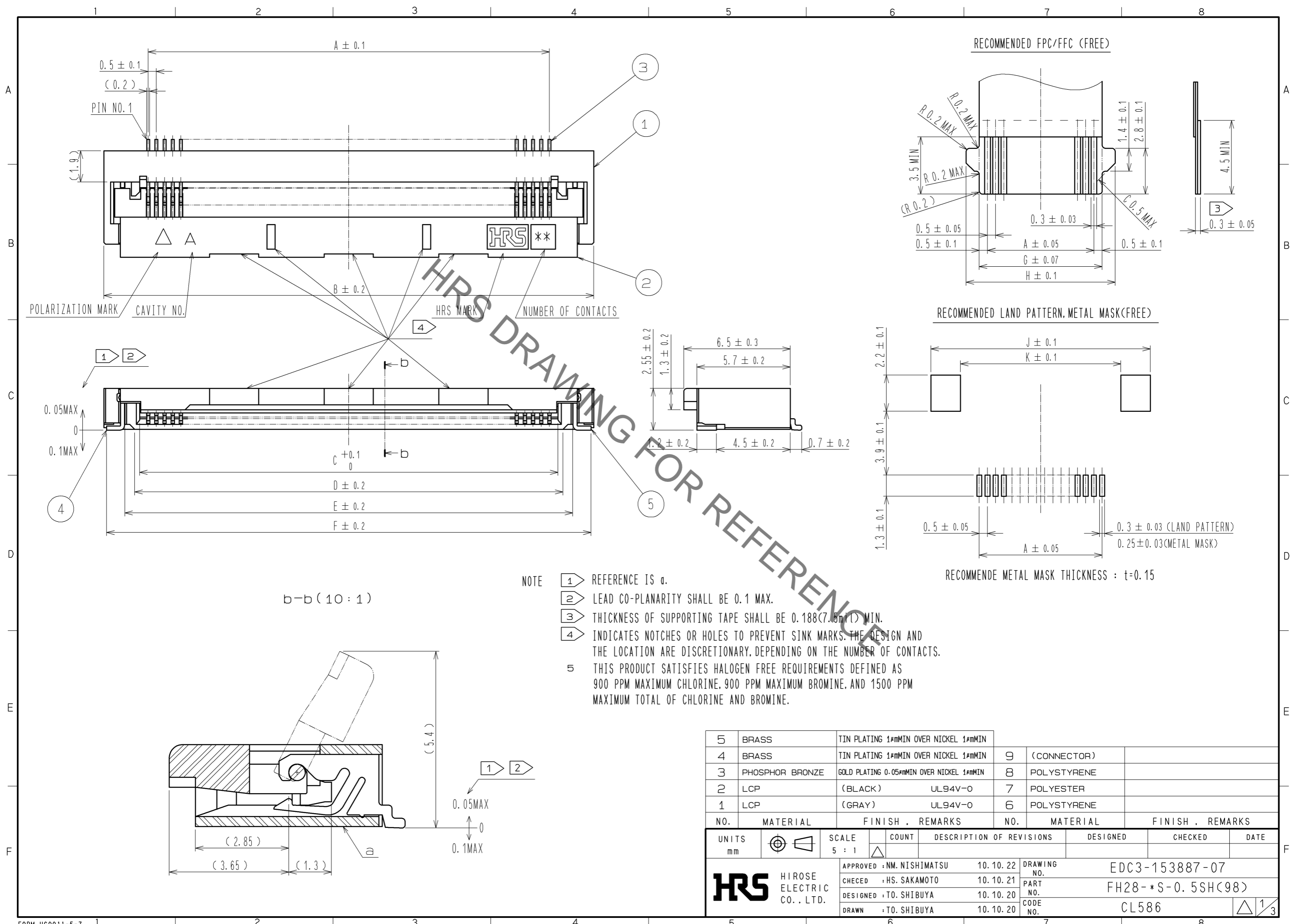
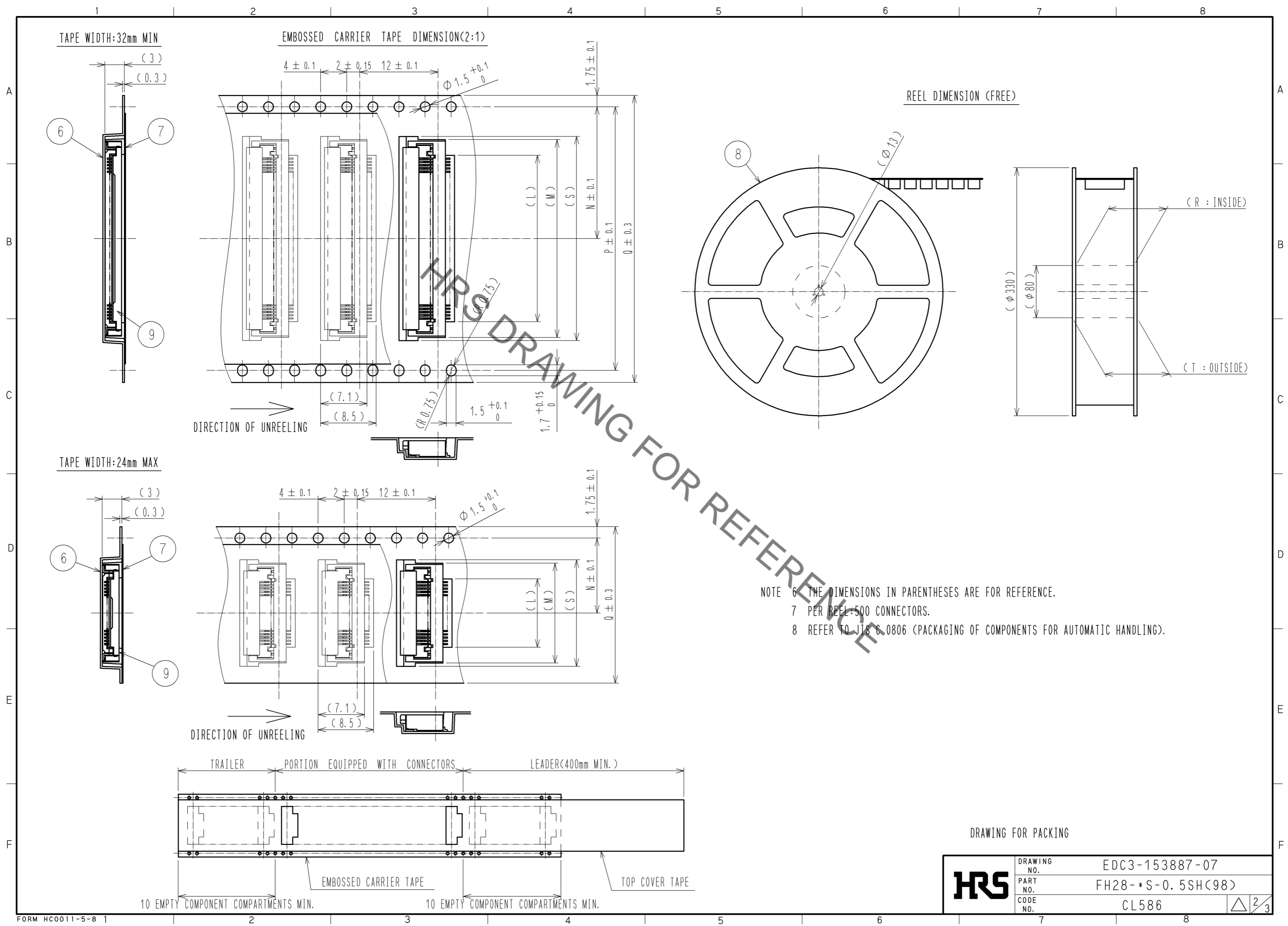


Sep.1.2021 Copyright 2021 HIROSE ELECTRIC CO., LTD. All Rights Reserved.  
In case of consideration for using Automotive equipment / device which demand high reliability, kindly contact our sales window correspondents.



| 5                         | BRASS           | TIN PLATING 1#mMIN OVER NICKEL 1#mMIN     |             |             |                          |          |         |      |
|---------------------------|-----------------|---|-------------|-------------|--------------------------|----------|---------|------|
| 4                         | BRASS           | TIN PLATING 1#mMIN OVER NICKEL 1#mMIN     | 9           | (CONNECTOR) |                          |          |         |      |
| 3                         | PHOSPHOR BRONZE | GOLD PLATING 0.05#mMIN OVER NICKEL 1#mMIN | 8           | POLYSTYRENE |                          |          |         |      |
| 2                         | LCP             | (BLACK) UL94V-0                           | 7           | POLYESTER   |                          |          |         |      |
| 1                         | LCP             | (GRAY) UL94V-0                            | 6           | POLYSTYRENE |                          |          |         |      |
| NO.                       | MATERIAL        | FINISH . REMARKS                          | NO.         | MATERIAL    | FINISH . REMARKS         |          |         |      |
| UNITS                     | mm              | SCALE                                     | 5 : 1       | COUNT       | DESCRIPTION OF REVISIONS | DESIGNED | CHECKED | DATE |
| APPROVED : NM. NISHIMATSU |                 | 10.10.22                                  | DRAWING NO. |             | EDC3-153887-07           |          |         |      |
| CHECKED : HS. SAKAMOTO    |                 | 10.10.21                                  | PART NO.    |             | FH28-*S-0.5SH(98)        |          |         |      |
| DESIGNED : TO. SHIBUYA    |                 | 10.10.20                                  | CODE NO.    |             | CL586                    |          |         |      |
| DRAWN : TO. SHIBUYA       |                 | 10.10.20                                  |             |             |                          |          |         |      |

Sep.1.2021 Copyright 2021 HIROSE ELECTRIC CO., LTD. All Rights Reserved.  
 In case of consideration for using Automotive equipment / device which demand high reliability, kindly contact our sales window correspondents.



|            |             |                   |
|------------|-------------|-------------------|
| <b>HRS</b> | DRAWING NO. | EDC3-153887-07    |
|            | PART NO.    | FH28-*S-0.5SH(98) |
|            | CODE NO.    | CL586             |
|            |             | $\triangle$ 2/3   |

Sep.1.2021 Copyright 2021 HIROSE ELECTRIC CO., LTD. All Rights Reserved.  
In case of consideration for using Automotive equipment / device which demand high reliability, kindly contact our sales window correspondents.

DIMENSION TABLE OF CONNECTOR, FPC, FFC, LAND PATTERN AND METAL MASK

| PART NO.           | CODE NO.        | *  | A    | B    | C     | D     | E     | F     | G    | H    | J    | K    |
|--------------------|-----------------|----|------|------|-------|-------|-------|-------|------|------|------|------|
| FH28-10S-0.5SH(98) | CL586-1861-4-98 | 10 | 4.5  | 9.9  | 5.57  | 6.15  | 7.35  | 9.58  | 5.5  | 7.1  | 10.6 | 7    |
| FH28-40S-0.5SH(98) | CL586-1803-8-98 | 40 | 19.5 | 24.9 | 20.57 | 21.15 | 22.35 | 24.58 | 20.5 | 22.1 | 25.6 | 22   |
| FH28-45S-0.5SH(98) | CL586-1848-6-98 | 45 | 22   | 27.4 | 23.07 | 23.65 | 24.85 | 27.08 | 23   | 24.6 | 28.1 | 24.5 |
| FH28-50S-0.5SH(98) | CL586-1801-2-98 | 50 | 24.5 | 29.9 | 25.57 | 26.15 | 27.35 | 29.58 | 25.5 | 27.1 | 30.6 | 27   |
| FH28-55S-0.5SH(98) | CL586-1800-0-98 | 55 | 27   | 32.4 | 28.07 | 28.65 | 29.85 | 32.08 | 28   | 29.6 | 33.1 | 29.5 |
| FH28-60S-0.5SH(98) | CL586-1811-6-98 | 60 | 29.5 | 34.9 | 30.57 | 31.15 | 32.35 | 34.58 | 30.5 | 32.1 | 35.6 | 32   |

DIMENSION TABLE OF DRAWING FOR PACKING

| PART NO.           | CODE NO.        | *  | L    | M    | N    | P    | Q  | R    | T    | S    |
|--------------------|-----------------|----|------|------|------|------|----|------|------|------|
| FH28-10S-0.5SH(98) | CL586-1861-4-98 | 10 | 5.5  | 10.3 | 11.5 | -    | 24 | 25.4 | 29.4 | 11.3 |
| FH28-40S-0.5SH(98) | CL586-1803-8-98 | 40 | 20.5 | 25.3 | 20.2 | 40.4 | 44 | 45.4 | 49.4 | -    |
| FH28-45S-0.5SH(98) | CL586-1848-6-98 | 45 | 23   | 27.8 | 20.2 | 40.4 | 44 | 45.4 | 49.4 | 28.8 |
| FH28-50S-0.5SH(98) | CL586-1801-2-98 | 50 | 25.5 | 30.3 | 20.2 | 40.4 | 44 | 45.4 | 49.4 | -    |
| FH28-55S-0.5SH(98) | CL586-1800-0-98 | 55 | 28   | 32.8 | 20.2 | 40.4 | 44 | 45.4 | 49.4 | -    |
| FH28-60S-0.5SH(98) | CL586-1811-6-98 | 60 | 30.5 | 35.3 | 26.2 | 52.4 | 56 | 57.4 | 61.4 | -    |

\* : NUMBER OF CONTACTS

|            |             |                   |
|------------|-------------|-------------------|
| <b>HRS</b> | DRAWING NO. | EDC3-153887-07    |
|            | PART NO.    | FH28-*S-0.5SH(98) |
|            | CODE NO.    | CL586             |
|            |             | △ 3/3             |

# Mouser Electronics

Authorized Distributor

Click to View Pricing, Inventory, Delivery & Lifecycle Information:

[Hirose Electric:](#)

[FH28-55S-0.5SH\(98\)](#)