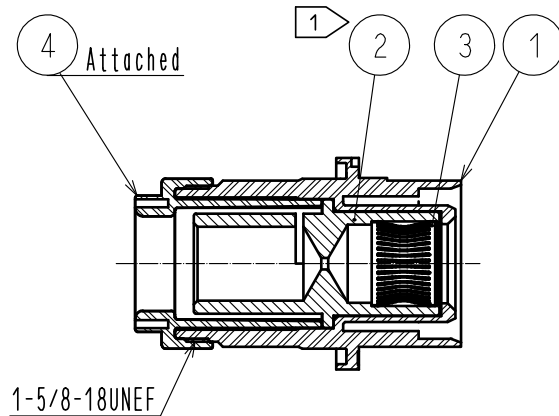
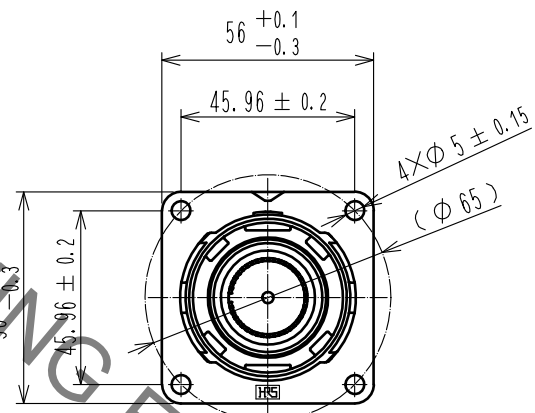
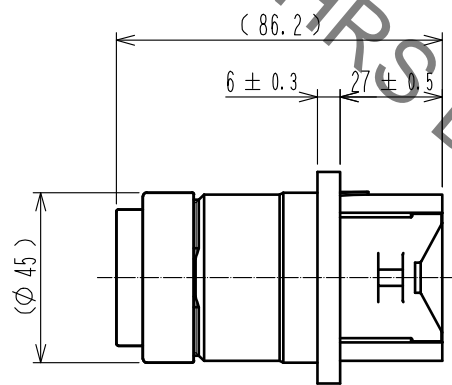
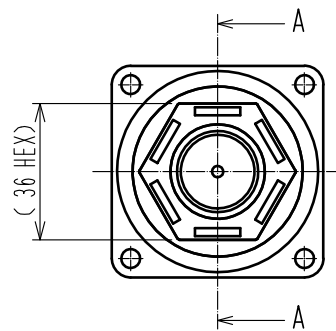
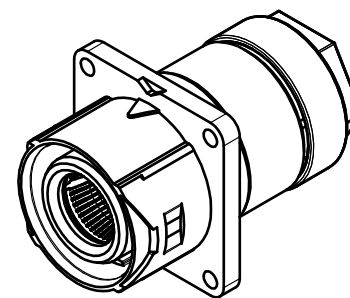


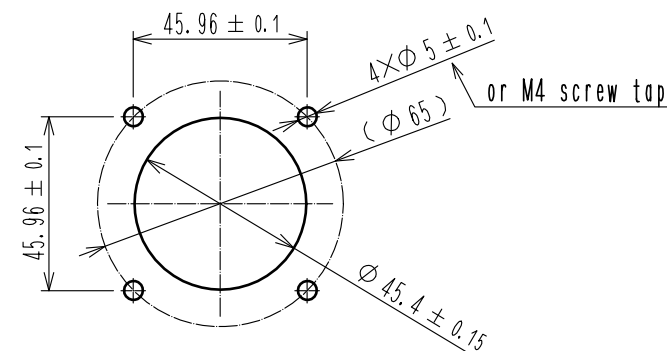
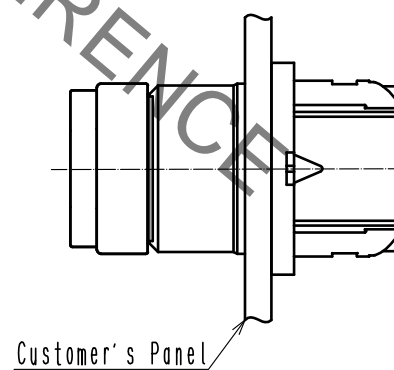
Jan.1.2022 Copyright 2022 HIROSE ELECTRIC CO., LTD. All Rights Reserved.
In case of consideration for using Automotive equipment / device which demand high reliability, kindly contact our sales window correspondents.



Isometric Diagram

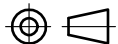





Recommended Panel Installation State Diagram・Dimensions.



- Notes ①. The contact will be sent with Ref.No. ③ inserted into Ref. No. ②.
2. Rotation examples of ref no.① and ④ are shown.
3. Recommended Crimping Tool: JIS-C-9711 IZUMI CO., LTD REC-150F.
4. The recommended tightening torque of Ref.No.⑤ to be 6N・m.
Furthermore, to prevent loosening, it is recommended that thread-locking fluid be used.
5. This product is UL certified. (File E481344)

WARNING .This product is not hot pluggable.

| | | | | | | | | |
|---|---|------------------|---|----------|--|------------------|---------|------|
| 2 | Copper | Silver plating | 3μm | 4 | PBT | (Black) | UL94V-0 | |
| 1 | PBT | (Black) | UL94V-0 | 3 | Copper alloy | Silver plating | 3μm | |
| NO. | MATERIAL | FINISH , REMARKS | | NO. | MATERIAL | FINISH , REMARKS | | |
| UNITS mm |  | SCALE 1 : 2 |  | COUNT | DESCRIPTION OF REVISIONS | DESIGNED | CHECKED | DATE |
| | | | | | | | | |
| | | | | | | | | |
| | | | | | | | | |
| | | | | | | | | |
|  HIROSE ELECTRIC CO., LTD. | | APPROVED | : EJ. KUNII | 16.08.08 | DRAWING NO. | EDC-119507-00-00 | | |
| | | CHECKED | : EJ. KUNII | 16.08.08 | PART NO. | EM40M-BJ-1SCA-K | | |
| | | DESIGNED | : TY. TAKAHASHI | 16.08.08 | CODE NO. | CL138-0073-0-00 | | |
| | | DRAWN | : TY. TAKAHASHI | 16.08.08 |  1/ | | | |

Mouser Electronics

Authorized Distributor

Click to View Pricing, Inventory, Delivery & Lifecycle Information:

[Hirose Electric:](#)

[EM40M-BJ-1SCA-K](#)