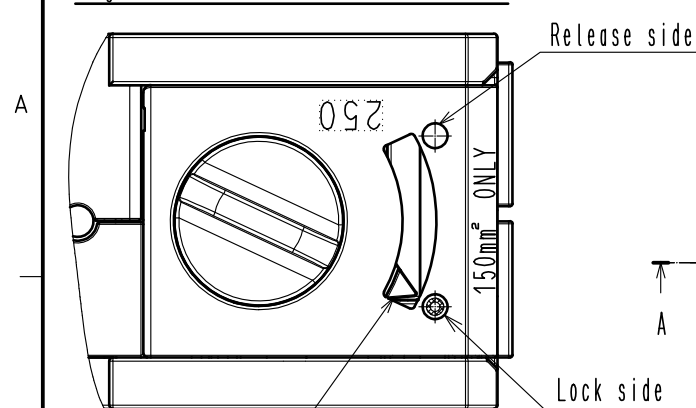
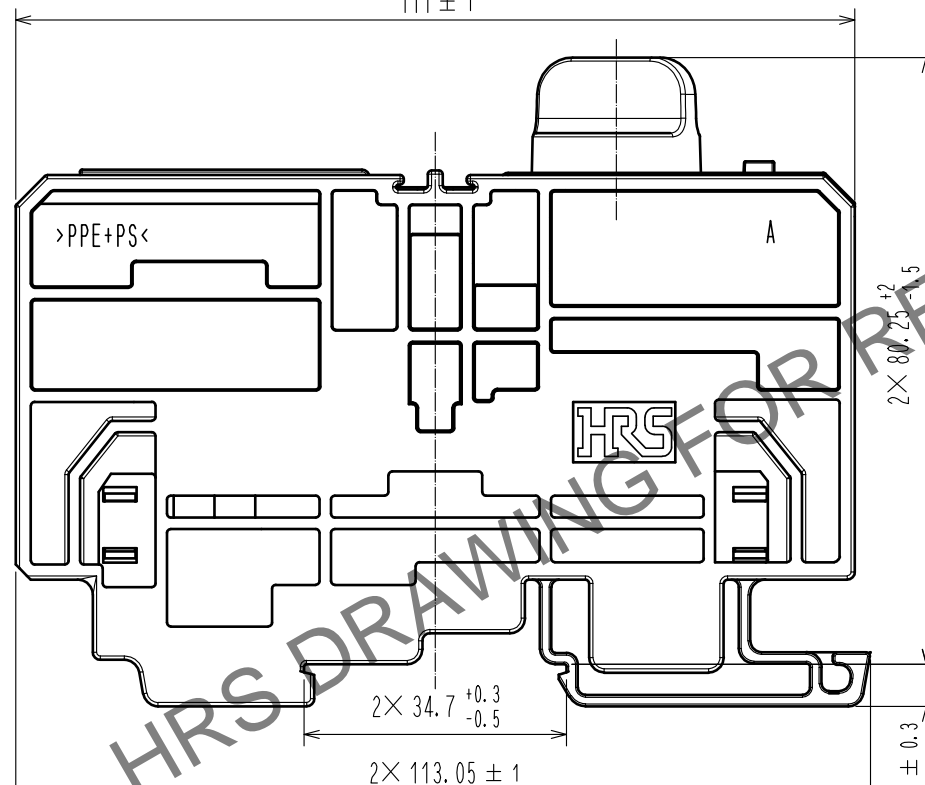
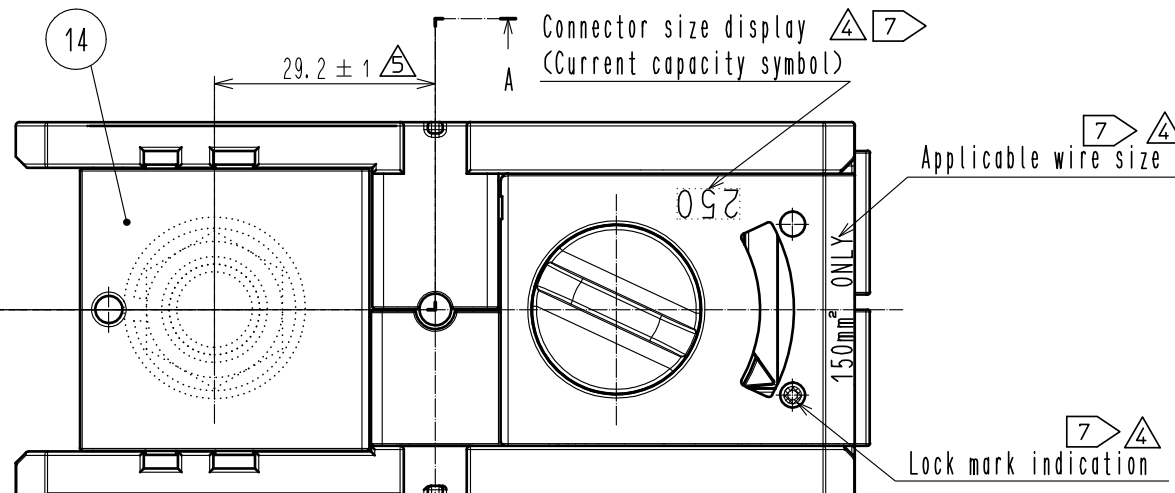
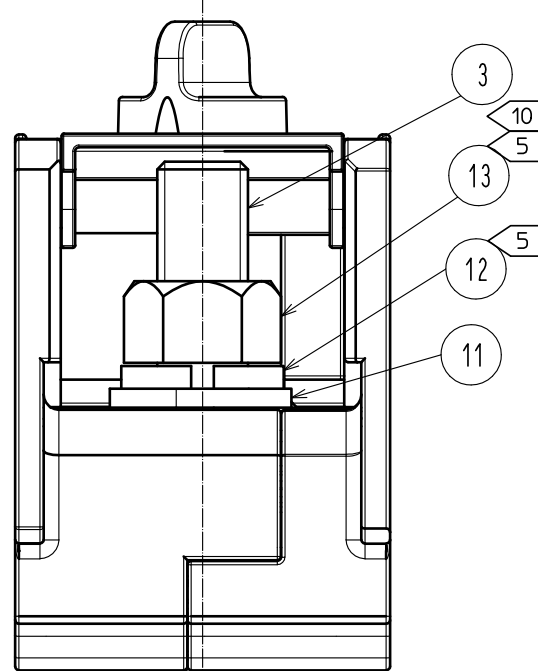


Aug.1.2024 Copyright 2024 HIROSE ELECTRIC CO., LTD. All Rights Reserved.
In case of consideration for using Automotive equipment / device which demand high reliability, kindly contact our sales window correspondents.

Figure.1 Locked State External View



The protruding part shall be on the Lock side.



- Notes
1. This product should be handled in accordance with the EF2 series guideline ETAD-C0387-00.
 2. Applicable crimp contacts:
NICHIFU CO., LTD R150-12, R150-14, R150-16 J.S.T. MFG. CO., LTD R150-12, R150-14, R150-16 or equivalent.
 3. Applicable crimping tool: JIS-C-9711 MAXELL IZUMI CO., LTD REC-Li150 or REC-Li325.
 4. When inserting the contact, please do so until Ref. No. ⑥ rotates back to its original position (shown in Figure.1 Locked State External View).
Furthermore, lightly pull the cable to confirm that the contact is locked and mated.
 5. The positional relationship in the rotational direction and vertical direction for part numbers ⑩ and ⑪ is shown as an example.
 6. Points to note before use:
 - Use only tin coated material.
 - Please check that dimensions satisfy those of Figure.2 and that there is no deformation, dirt etc., or abnormal contact resistance value.
 - Only the screw side of the bus bar can be used.When using the bus bar, the dimensions shown in Figure.3 and the dimensions corresponding to the allowable current are satisfied.
Confirm that there is no deformation, dirt, etc., or abnormality in contact resistance before use.
 - Insertion and withdrawal forces, as well as contact resistance values could change due to the quality of the coating. Therefore, please evaluate beforehand.
- ④⑦ After November 1, 2023, we will gradually switch to products with connector size indication, compatible wire size indication, and lock mark indication.
Some products do not have connector size indication, compatible wire size indication, or lock mark indication.

Figure.2 Applicable Contact (Commercial item)(Free)

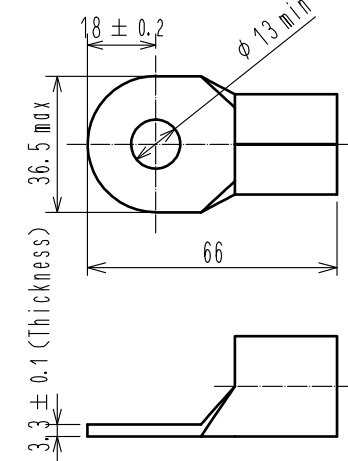
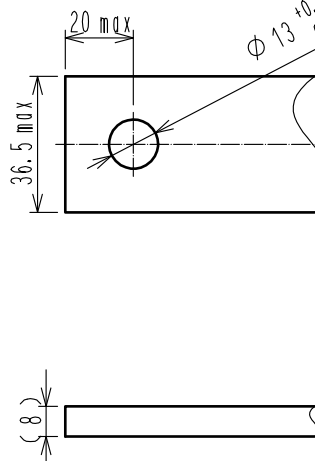


Figure.3 Recommended bus bar dimensions.



- Warning 8. This product is not hot pluggable.
- Warning 9. Keep your fingers and other conductors from coming into contact with the electrically charged parts in order to avoid electrical shock or a short circuit.
- ⑩ The recommended clamp torque of ref. ⑬ to be 14N·m.

7	Stainless steel		14	PC	(Clear) UL94V-0
6	PBT	(Black) UL94V-0	13	Iron	Trivalent Chromate JIS B 1181 HEX NUT M12×1.25, C133HEX
5	m-PPE	(Black) UL94V-0	12	Iron	Trivalent Chromate JIS B 1251 SPRING WASHER M12
4	m-PPE	(Black) UL94V-0	11	Iron	Trivalent Chromate JIS B 1256 PLAIN WASHER M12
3	Iron	Trivalent Chromate JIS B 1180 HEX BOLT M12×1.25	10	m-PPE	(Black) UL94V-0
2	Stainless steel		9	m-PPE	(Black) UL94V-0
1	Copper	Tin plating 1μm min	8	PBT	(Black) UL94V-0
NO.	MATERIAL	FINISH . REMARKS	NO.	MATERIAL	FINISH . REMARKS
UNITS mm	④⑦	SCALE 1 : 1	COUNT 1	DESCRIPTION OF REVISIONS DIS-C-00017865	DESIGNED HR. SATO
HRS HIROSE ELECTRIC CO., LTD.		APPROVED : TP. KOMATSU	20200304	DRAWING NO.	EDC-385260-00-00
		CHECKED : TP. KOMATSU	20200227	PART NO.	EF2A-DH250B-1
		DESIGNED : EK. KIDO	20200226	CODE NO.	CL0142-0226-0-00
		DRAWN : EK. KIDO	20200226		

Mouser Electronics

Authorized Distributor

Click to View Pricing, Inventory, Delivery & Lifecycle Information:

[Hirose Electric:](#)

[CX90MF-16P](#)