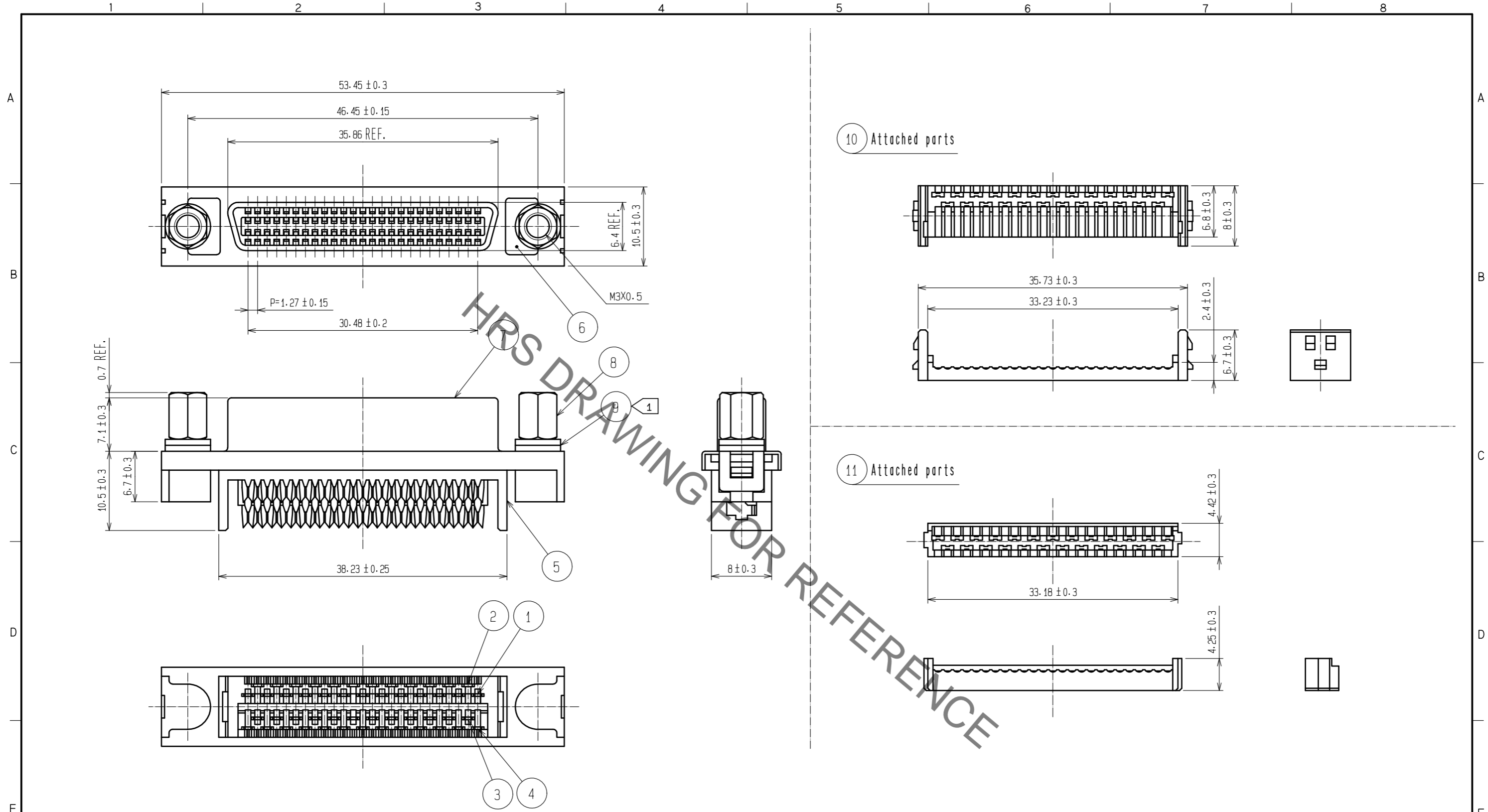
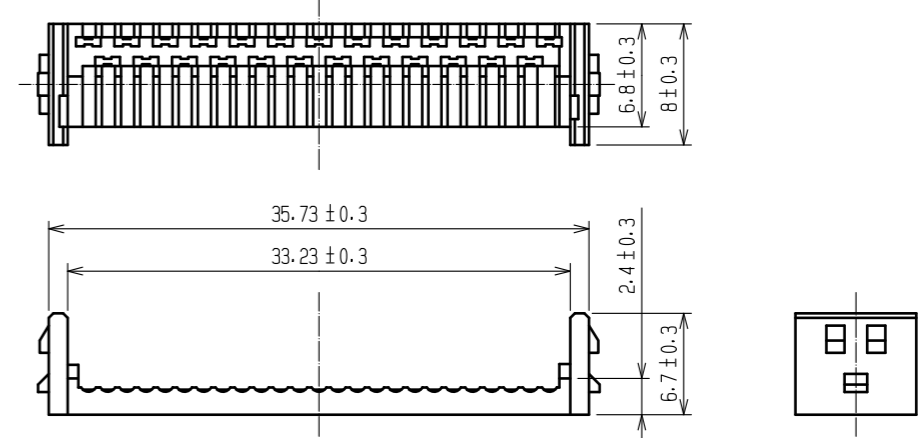


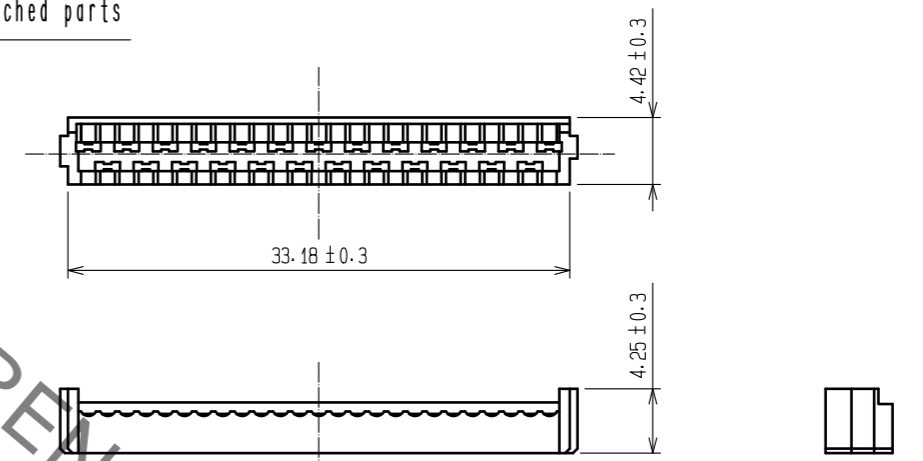
Sep.1.2021 Copyright 2021 HIROSE ELECTRIC CO., LTD. All Rights Reserved.
In case of consideration for using Automotive equipment / device which demand high reliability, kindly contact our sales window correspondents.



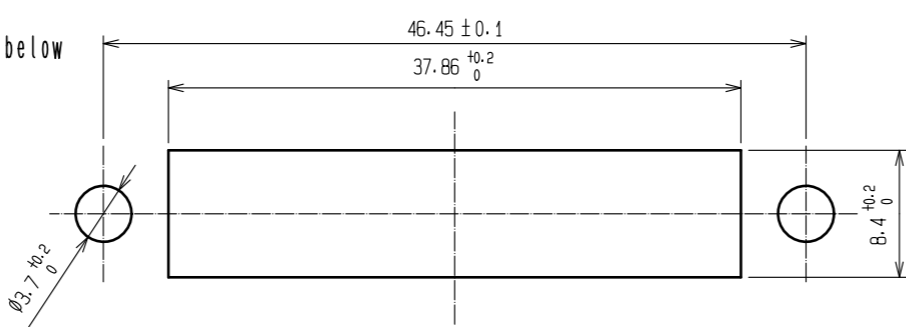
10 Attached parts



11 Attached parts



Recommended panel cutout



Note 1 Part No. ⑨ shall be finished as tabl shown below according to panel thickness.
(Washer thickness : 0.8)

Panel thickness	No. of washer
t = 0.7 to 1.0	2 each
t = 1.5 to 1.8	1 each

NO.	MATERIAL	FINISH	REMARKS	NO.	MATERIAL	FINISH	REMARKS
6	Zinc Alloy Die Casting	Nickel plating		11	PBT	UL94V-0(Black)	
5	PBT	UL94V-0(Milky-white)		10	PBT	UL94V-0(Black)	
4	Phosphor Bronze	Selective Gold plating 0.2 μm		9	Steel	Nickel plating	
3	Phosphor Bronze	Selective Gold plating 0.2 μm		8	Steel	Nickel plating	
2	Phosphor Bronze	Selective Gold plating 0.2 μm		7	Steel	Nickel plating	
1	Phosphor Bronze	Selective Gold Plating 0.2 μm					

UNITS	SCALE	COUNT	DESCRIPTION OF REVISIONS	DESIGNED	CHECKED	DATE
mm	2 : 1	△				

APPROVED : KI. NAGANUMA	18.06.27	DRAWING NO.	EDC-044934-55-03
CHECKED : KI. NAGANUMA	18.06.27	PART NO.	DX33A-50S-LNA(55)
DESIGNED : YS. SAKODA	18.06.26	CODE NO.	CL230-0206-4-55
DRAWN : YS. SAKODA	18.06.26		

Mouser Electronics

Authorized Distributor

Click to View Pricing, Inventory, Delivery & Lifecycle Information:

[Hirose Electric:](#)

[DX33A-50S-LNA\(55\)](#)