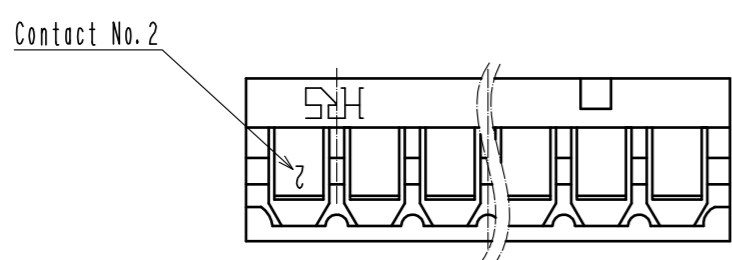
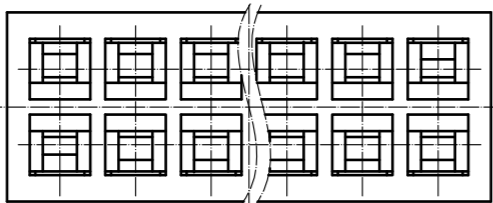
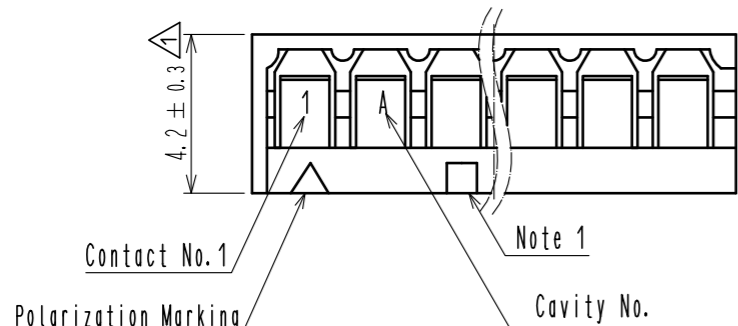
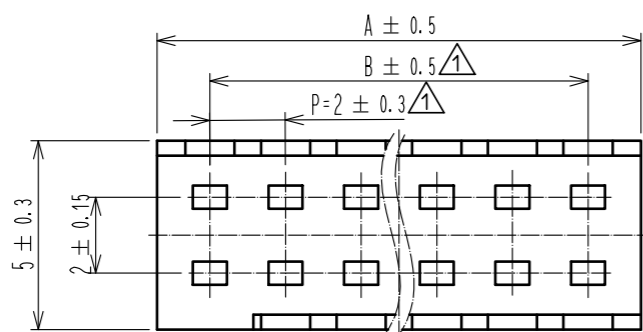
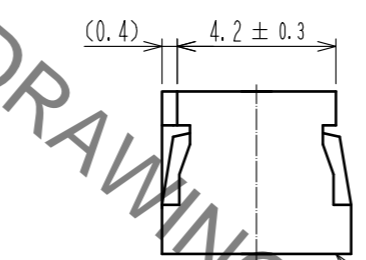


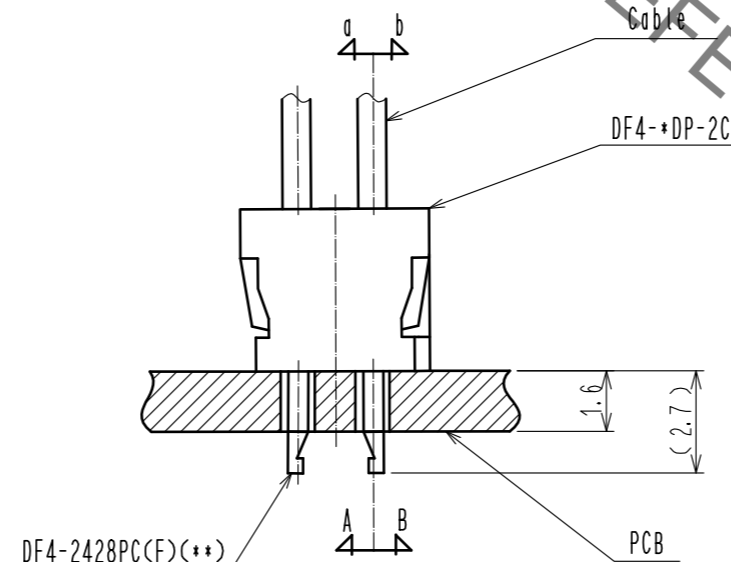
Sep.1.2021 Copyright 2021 HIROSE ELECTRIC CO., LTD. All Rights Reserved.
In case of consideration for using Automotive equipment / device which demand high reliability, kindly contact our sales window correspondents.



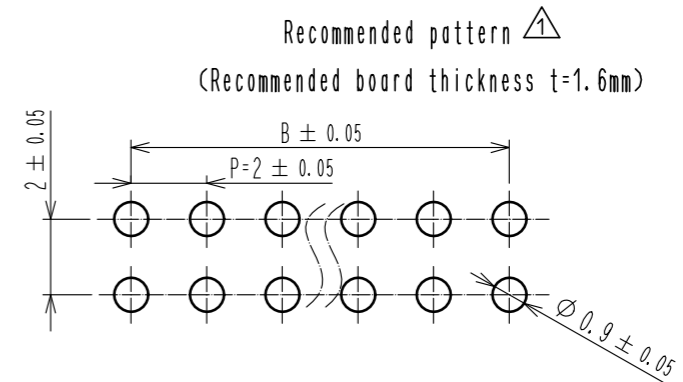
HRS DRAWING FOR REFERENCE



△ Crimp contact insertion drawing



Part No.	Code No.	Number of contact	A	B
DF4- 4DP-2C	544-0078-3	4	4.8	2.0
DF4- 6DP-2C	544-0079-6	6	6.8	4.0
DF4- 8DP-2C	544-0080-5	8	8.8	6.0
DF4-10DP-2C	544-0081-8	10	10.8	8.0
DF4-12DP-2C	544-0082-0	12	12.8	10.0
DF4-14DP-2C	544-0083-3	14	14.8	12.0
DF4-16DP-2C	544-0084-6	16	16.8	14.0
DF4-18DP-2C	544-0085-9	18	18.8	16.0
DF4-20DP-2C	544-0086-1	20	20.8	18.0
DF4-22DP-2C	544-0087-4	22	22.8	20.0
DF4-24DP-2C	544-0088-7	24	24.8	22.0
DF4-26DP-2C	544-0089-0	26	26.8	24.0
DF4-28DP-2C	544-0090-9	28	28.8	26.0
DF4-30DP-2C	544-0091-1	30	30.8	28.0
DF4-32DP-2C	544-0092-4	32	32.8	30.0



- △ Recommended pattern
(Recommended board thickness t=1.6mm)
1. Square marks are indicated in relief on the part of following contact No. : 5, 10, 15, 20, 25, 30
 2. Recommended PCB hole diameter 0.9±0.05mm
 3. In case of some thin jacket wires, tips are hard to put together. however, the way of holding these wires makes easier to put them into PCB.
- Ex. When the direction of contact tip is (A), Please hold a wire to the direction(a).

NO.	MATERIAL	FINISH . REMARKS	NO.	MATERIAL	FINISH . REMARKS
			1	Polyamide	UL94V-0 (BLACK)
UNITS	mm	SCALE	5 : 1	COUNT	6
DESCRIPTION OF REVISIONS			DESIGNED	CHECKED	DATE
DIS-H-00004425			HT. SATO	SZ. ONO	20181116
APPROVED : KJ. KATAYOSE			20050105	DRAWING NO. EDC-160366-00-00	
CHECKED : TY. OMA			20050105	PART NO. DF4- * DP-2C	
DESIGNED : IO. DENPOUYA			20050105	CODE NO. CL544	
DRAWN : IO. DENPOUYA			20050105	1/1	

Mouser Electronics

Authorized Distributor

Click to View Pricing, Inventory, Delivery & Lifecycle Information:

[Hirose Electric:](#)

[DF4-28DP-2C](#)