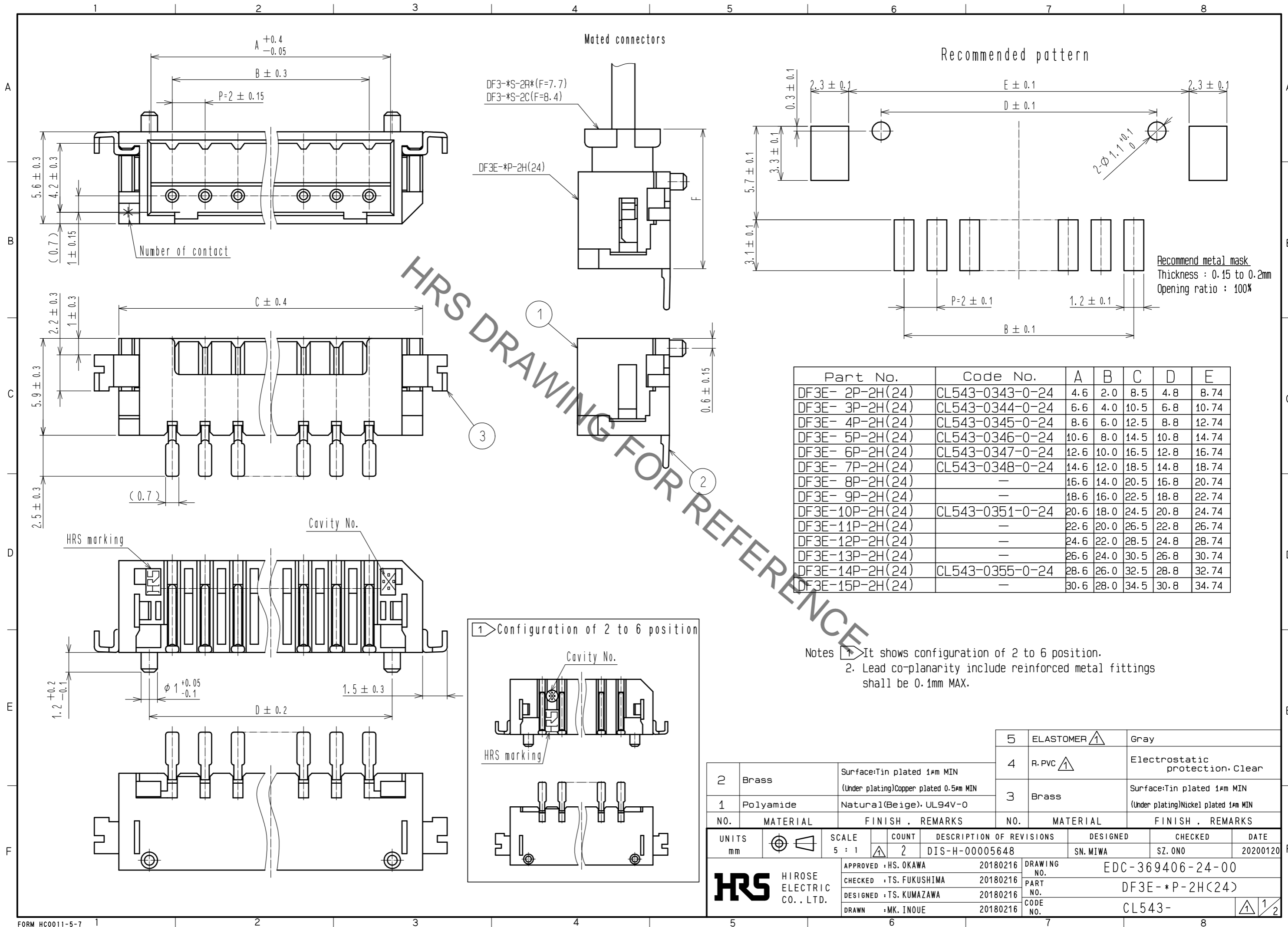


Aug.1.2021 Copyright 2021 HIROSE ELECTRIC CO., LTD. All Rights Reserved.
In case of consideration for using Automotive equipment / device which demand high reliability, kindly contact our sales window correspondents.



Part No.	Code No.	A	B	C	D	E
DF3E- 2P-2H(24)	CL543-0343-0-24	4.6	2.0	8.5	4.8	8.74
DF3E- 3P-2H(24)	CL543-0344-0-24	6.6	4.0	10.5	6.8	10.74
DF3E- 4P-2H(24)	CL543-0345-0-24	8.6	6.0	12.5	8.8	12.74
DF3E- 5P-2H(24)	CL543-0346-0-24	10.6	8.0	14.5	10.8	14.74
DF3E- 6P-2H(24)	CL543-0347-0-24	12.6	10.0	16.5	12.8	16.74
DF3E- 7P-2H(24)	CL543-0348-0-24	14.6	12.0	18.5	14.8	18.74
DF3E- 8P-2H(24)	-	16.6	14.0	20.5	16.8	20.74
DF3E- 9P-2H(24)	-	18.6	16.0	22.5	18.8	22.74
DF3E-10P-2H(24)	CL543-0351-0-24	20.6	18.0	24.5	20.8	24.74
DF3E-11P-2H(24)	-	22.6	20.0	26.5	22.8	26.74
DF3E-12P-2H(24)	-	24.6	22.0	28.5	24.8	28.74
DF3E-13P-2H(24)	-	26.6	24.0	30.5	26.8	30.74
DF3E-14P-2H(24)	CL543-0355-0-24	28.6	26.0	32.5	28.8	32.74
DF3E-15P-2H(24)	-	30.6	28.0	34.5	30.8	34.74

Notes 1 It shows configuration of 2 to 6 position.
2. Lead co-planarity include reinforced metal fittings shall be 0.1mm MAX.

NO.	MATERIAL	FINISH	REMARKS	NO.	MATERIAL	FINISH	REMARKS
2	Brass	Surface: Tin plated 1μm MIN (Under plating) Copper plated 0.5μm MIN		5	ELASTOMER	Gray	
1	Polyamide	Natural(Beige), UL94V-0		4	R.PVC	Electrostatic protection, Clear	
				3	Brass	Surface: Tin plated 1μm MIN (Under plating) Nickel plated 1μm MIN	

UNITS	SCALE	COUNT	DESCRIPTION OF REVISIONS	DESIGNED	CHECKED	DATE
mm	5 : 1	2	DIS-H-00005648	SN. MIWA	SZ. ONO	20200120

APPROVED	CHECKED	DESIGNED	DRAWN	DRAWING NO.	PART NO.	CODE NO.
HS. OKAWA	TS. FUKUSHIMA	TS. KUMAZAWA	MK. INOUE	20180216	20180216	20180216
				EDC-369406-24-00		
				DF3E-*P-2H(24)		
				CL543-		

Aug.1.2021 Copyright 2021 HIROSE ELECTRIC CO., LTD. All Rights Reserved.
 In case of consideration for using Automotive equipment / device which demand high reliability, kindly contact our sales window correspondents.

1 2 3 4 5 6 7 8

A

B

C

D

E

F

A

B

C

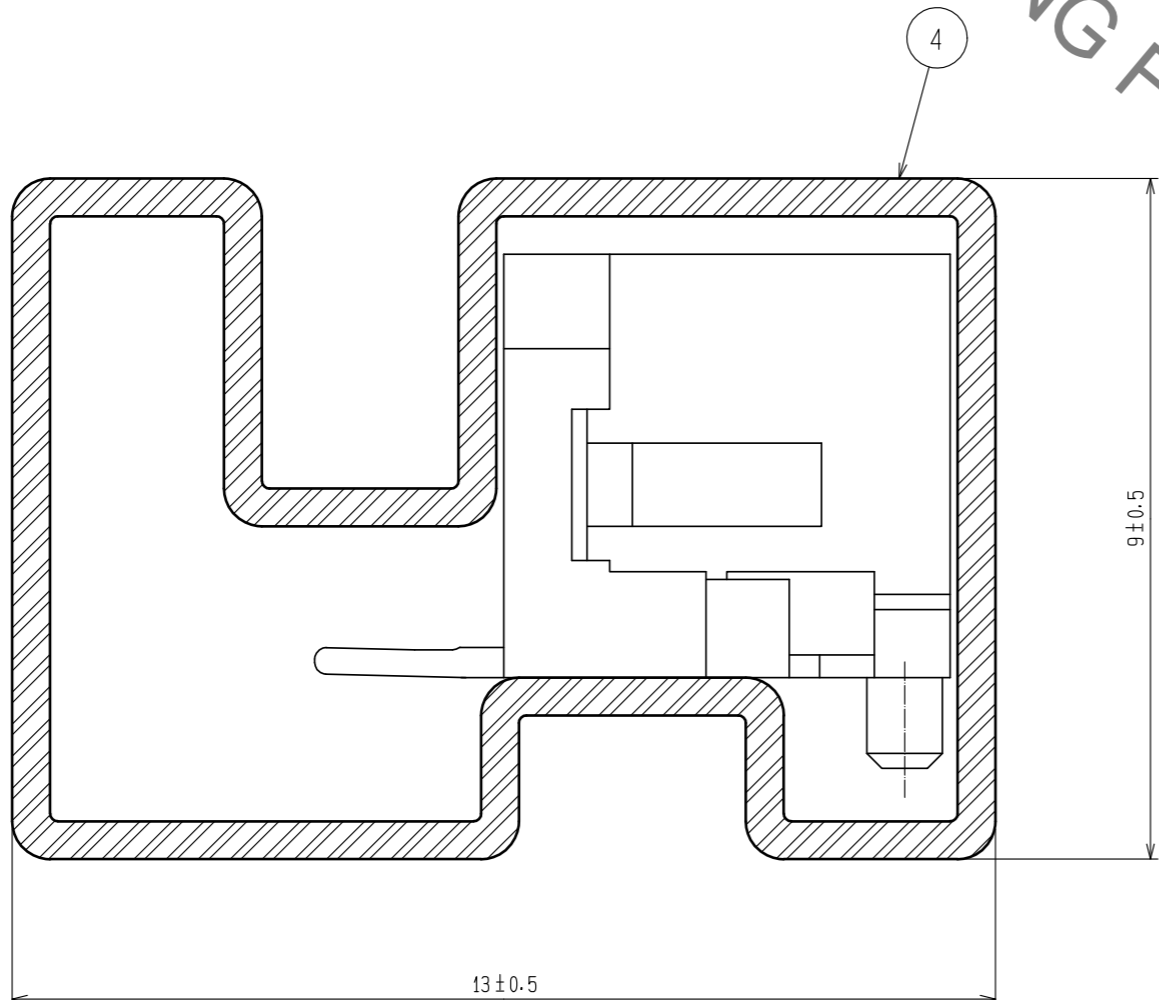
D

E

F



G-G (10:1)



Notes 3. Number of connectors per a magazine case shall be in accordance with the list.
 4. These connectors shall be on sale in accordance with the multiple quantity on the list.

Part No.	Code No.	Number of connectors
DF3E- 2P-2H(24)	CL543-0343-0-24	41
DF3E- 3P-2H(24)	CL543-0344-0-24	34
DF3E- 4P-2H(24)	CL543-0345-0-24	30
DF3E- 5P-2H(24)	CL543-0346-0-24	26
DF3E- 6P-2H(24)	CL543-0347-0-24	23
DF3E- 7P-2H(24)	CL543-0348-0-24	21
DF3E- 8P-2H(24)	-	19
DF3E- 9P-2H(24)	-	18
DF3E-10P-2H(24)	CL543-0351-0-24	17
DF3E-11P-2H(24)	-	15
DF3E-12P-2H(24)	-	14
DF3E-13P-2H(24)	-	14
DF3E-14P-2H(24)	CL543-0355-0-24	13
DF3E-15P-2H(24)	-	12

HRS	DRAWING NO.	EDC-369406-24-00	
	PART NO.	DF3E-*P-2H(24)	
	CODE NO.	CL543-	2/2

Mouser Electronics

Authorized Distributor

Click to View Pricing, Inventory, Delivery & Lifecycle Information:

[Hirose Electric:](#)

[DF3E-10P-2H\(24\)](#)