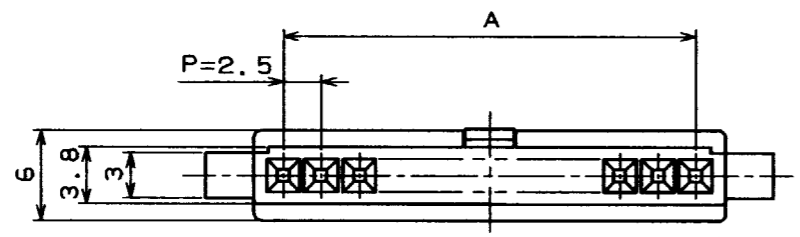
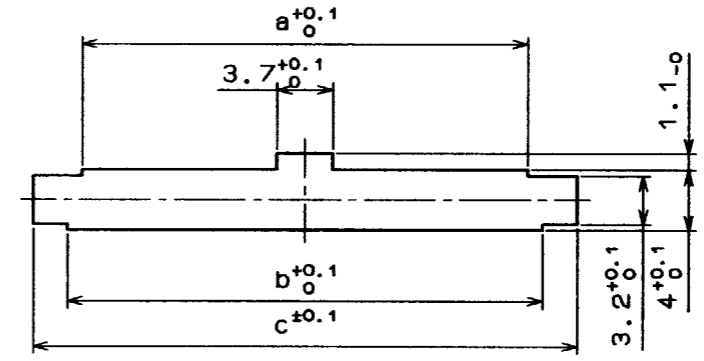


Aug.1.2021 Copyright 2021 HIROSE ELECTRIC CO., LTD. All Rights Reserved.
 In case of consideration for using Automotive equipment / device which demand high reliability, kindly contact our sales window correspondents.

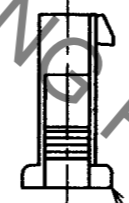
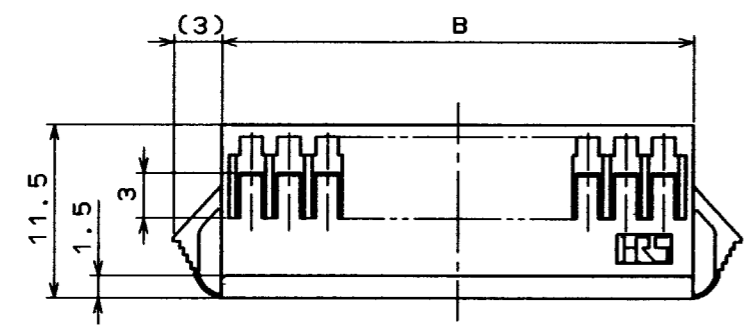
COUNT	DESCRIPTION OF REVISIONS	BY	CHKD	DATE	COUNT	DESCRIPTION OF REVISIONS	BY	CHKD	DATE



< PANEL CUTOUT >



PLEASE NOTE THAT A DIMENSION (PANEL THROUGH HOLE) VARY WITH THICKNESS OF PANEL WHEN YOU MOUNT DF1B EXTENSION SOCKET TO THE PANEL. AND PLEASE PROCESS THE PANEL THROUGH HOLE WITHOUT BURR.



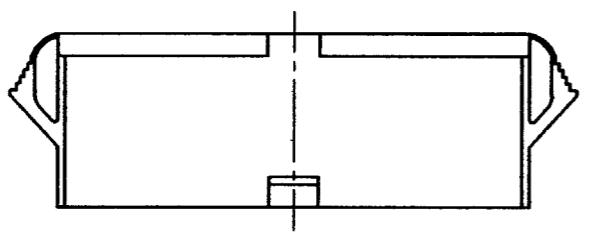
1

CONTACT NO. 1

NUMBER OF CONTACTS



CAVITY NO.



HRS NO	PART NO.	A	B	PANEL CUTOUT				
				a	b	PANEL THICKNESS		
						0.5-1.2	1.3-1.6	1.7-2.0
CL541-0320-8	DF1B-2ES-2.5RC	2.5	6.5	4.7	6.7	10.8	11.3	12.0
0321-0	3	5.0	9.0	7.2	9.2	13.3	13.8	14.5
0322-3	4	7.5	11.5	9.7	11.7	15.8	16.3	17.0
0323-6	5	10.0	14.0	12.2	14.2	18.3	18.8	19.5
0324-9	6	12.5	16.5	14.7	16.7	20.8	21.3	22.0
0325-1	7	15.0	19.0	17.2	19.2	23.3	23.8	24.5
0326-4	8	17.5	21.5	19.7	21.7	25.8	26.3	27.0
0327-7	9	20.0	24.0	22.2	24.2	28.3	28.8	29.5
0328-0	10	22.5	26.5	24.7	26.7	30.8	31.3	32.0
0329-2	11	25.0	29.0	27.2	29.2	33.3	33.8	34.5
0330-1	12	27.5	31.5	29.7	31.7	35.8	36.3	37.0
0331-4	13	30.0	34.0	32.2	34.2	38.3	38.8	39.5

NO. MATERIAL FINISH, REMARKS		1 POLYAMIDE NATURAL (WHITE) UL94V-0	
CODE NO. (OLD)		NO. MATERIAL FINISH, REMARKS	
DRAWN <i>M. Gotoh</i>		DESIGNED <i>M. Gotoh</i>	CHECKED <i>J. Oma</i>
'94. 3. 24		'94. 3. 24	'94. 3. 25
DRAWING NO. EDC3-160093-02		PART NO. DF1B-*ES-2.5RC	
SCALE 2:1		CODE NO. 0320 8	
UNITS mm		CL541-0331-4	

TO

Mouser Electronics

Authorized Distributor

Click to View Pricing, Inventory, Delivery & Lifecycle Information:

[Hirose Electric:](#)

[DF1B-13ES-2.5RC](#)