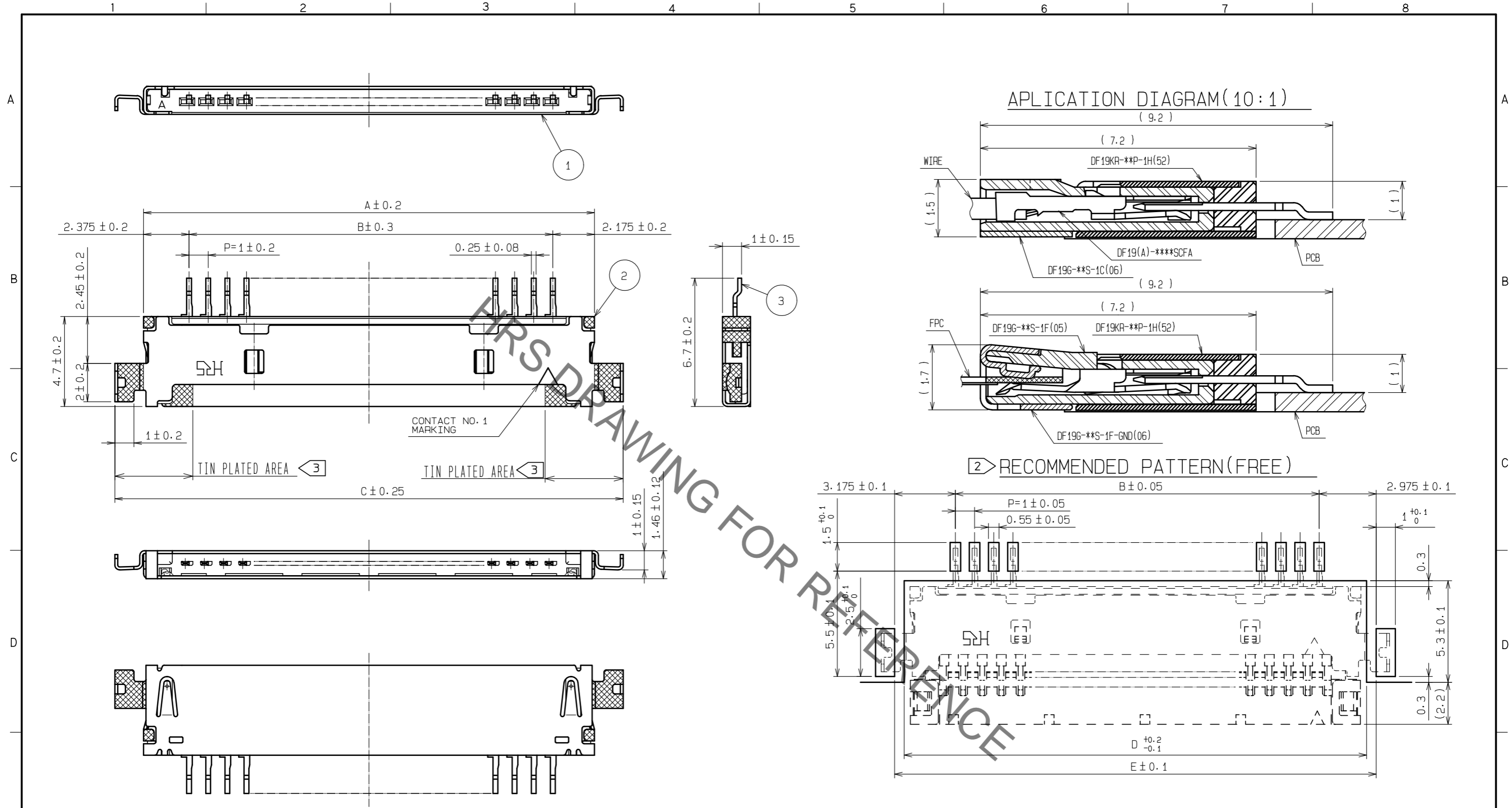


Sep.1.2021 Copyright 2021 HIROSE ELECTRIC CO., LTD. All Rights Reserved.
In case of consideration for using Automotive equipment / device which demand high reliability, kindly contact our sales window correspondents.



PART No.	CODE No.	NUMBER OF CONTACT	A	B	C	D	E
DF19KR-14P-1H(52)	CL685-0024-8-52	14	17.55	13	20.55	18.15	19.15
DF19KR-20P-1H(52)	CL685-0023-5-52	20	23.55	19	26.55	24.15	25.15

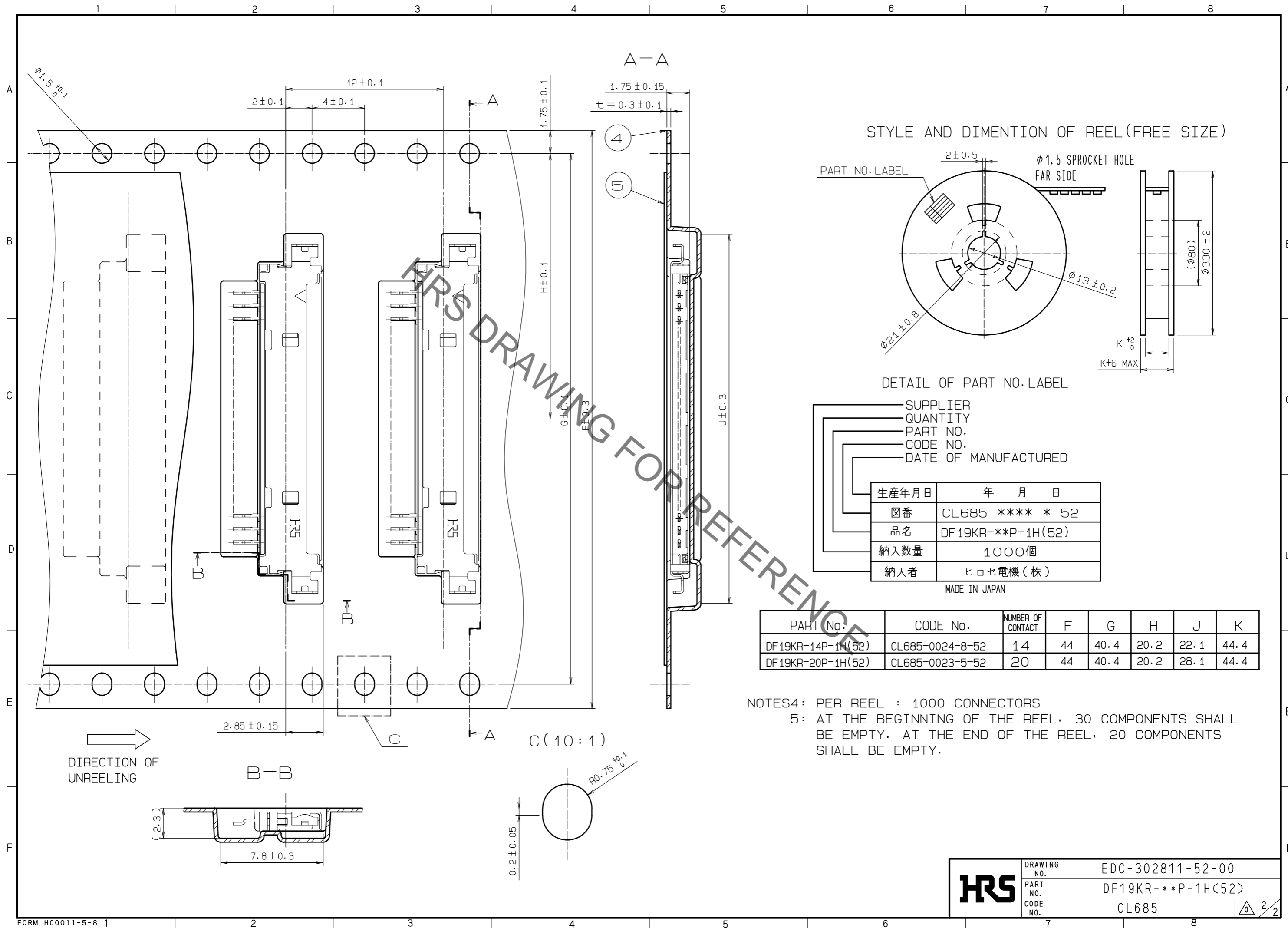
NOTES1: LEAD CO-PLANARITY SHALL BE 0.1 mm MAX.
 2) RECOMMENDED THICKNESS OF CREAM SOLDER PASTE: 0.15mm
 OPEN AREA RATIO: 100%

NO.	MATERIAL	FINISH, REMARKS	NO.	MATERIAL	FINISH, REMARKS
2	PHOSPHER BRONZE	LEAD AREA:TIN PLATED 1#m min UNDER PLATING:NICKEL PLATED 0.5#m min	3	PHOSPHER BRONZE	LEAD AREA:TIN PLATED 1#m min UNDER PLATING:NICKEL PLATED 1#m min
1	POLYAMIDE	BLACK, UL94V-0	4	PS	CLEAR, (EMBOSSD CARRIER TAPE)
			5	POLYESTER	CLEAR, (COVER TAPE)

UNITS	SCALE	COUNT	DESCRIPTION OF REVISIONS	DESIGNED	CHECKED	DATE
mm	5 : 1	△	APPROVED : HS. OKAWA 20200313			
			CHECKED : TS. KUMAZAWA 20200313			
			DESIGNED : HK. HAYASHI 20200313			
			DRAWN : DS. HIROWATARI 20200306			

DRAWING NO.	PART NO.	CODE NO.
EDC-302811-52-00	DF19KR- ** P-1H(52)	CL685-

Sep.1.2021 Copyright 2021 HIROSE ELECTRIC CO., LTD. All Rights Reserved.
 In case of consideration for using Automotive equipment / device which demand high reliability, kindly contact our sales window correspondents.



HRS	DRAWING NO.	EDC-302811-52-00
	PART NO.	DF19KR-**P-1H(52)
	CODE NO.	CL685-

Mouser Electronics

Authorized Distributor

Click to View Pricing, Inventory, Delivery & Lifecycle Information:

[Hirose Electric:](#)

[DF19KR-20P-1H\(52\)](#)