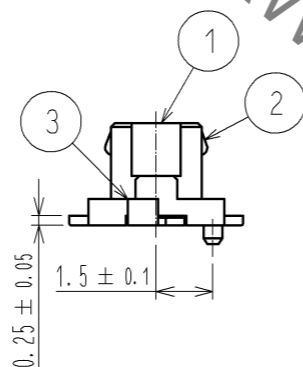
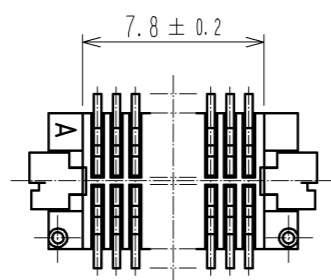
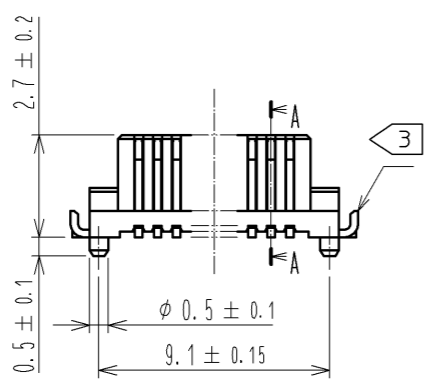
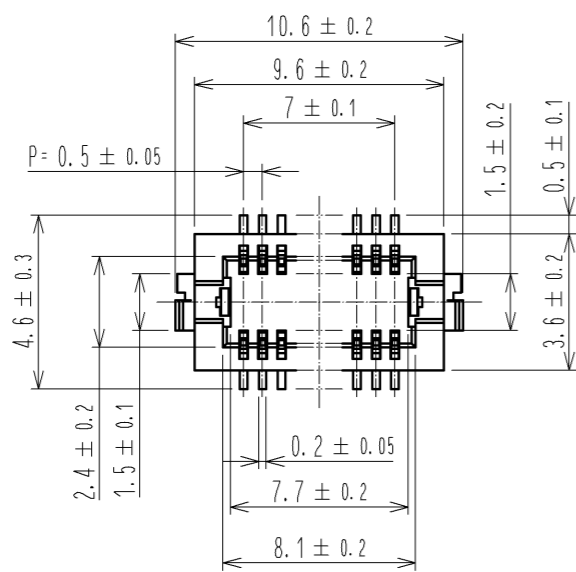
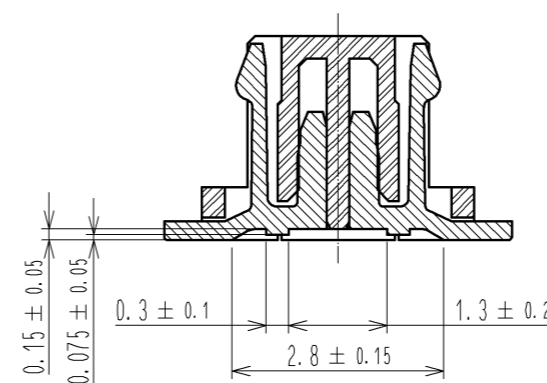


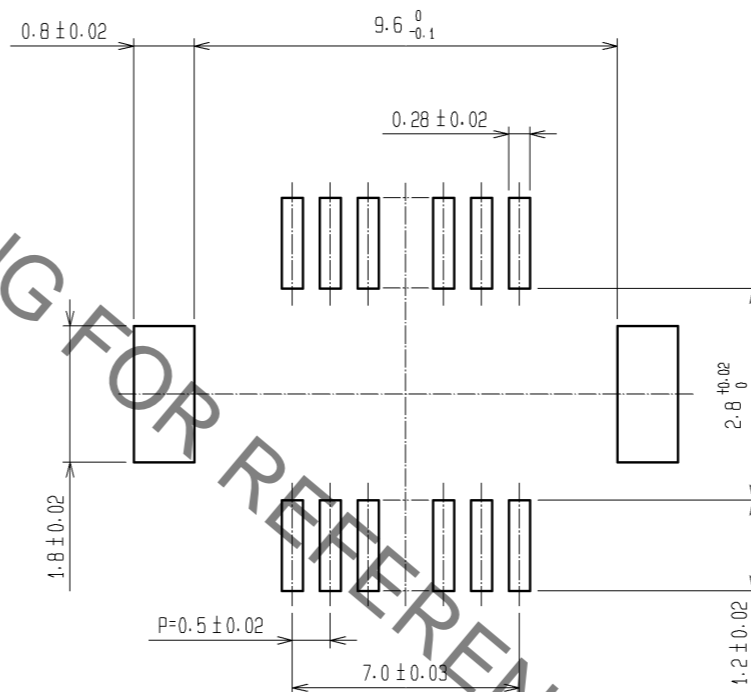
Jun.1.2021 Copyright 2021 HIROSE ELECTRIC CO., LTD. All Rights Reserved.  
In case of consideration for using Automotive equipment / device which demand high reliability, kindly contact our sales window correspondents.



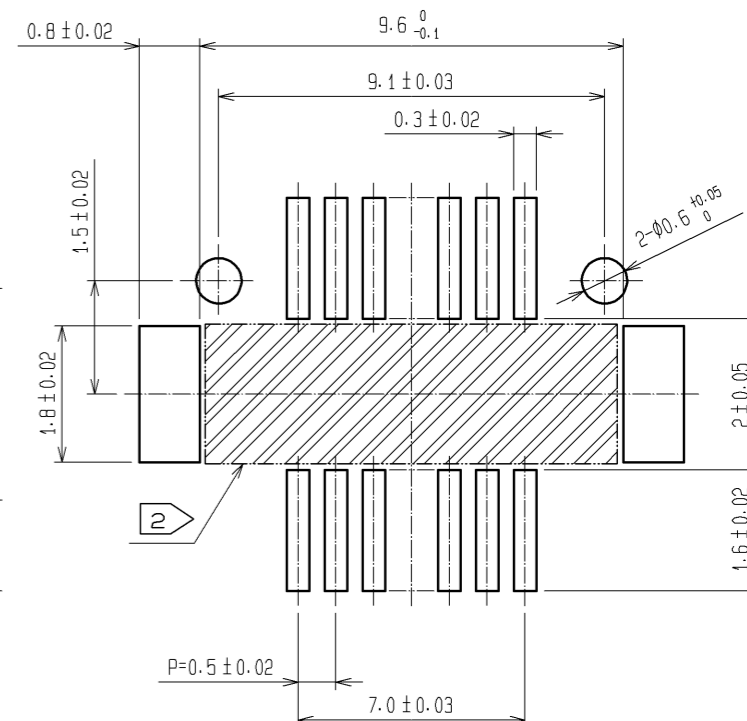
A-A (10:1)



RECOMMEND METAL MASK PATTERN (10:1)



RECOMMENDED PATTERN (10:1)

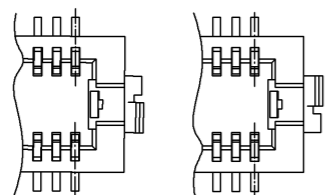


RECOMMENDED THICKNESS OF SOLDER PASTE: 120μm

NOTES 1 : LEAD CO-PLANARITY INCLUDING REINFORCED METAL FITTINGS SHALL BE 0.08 mm MAX.

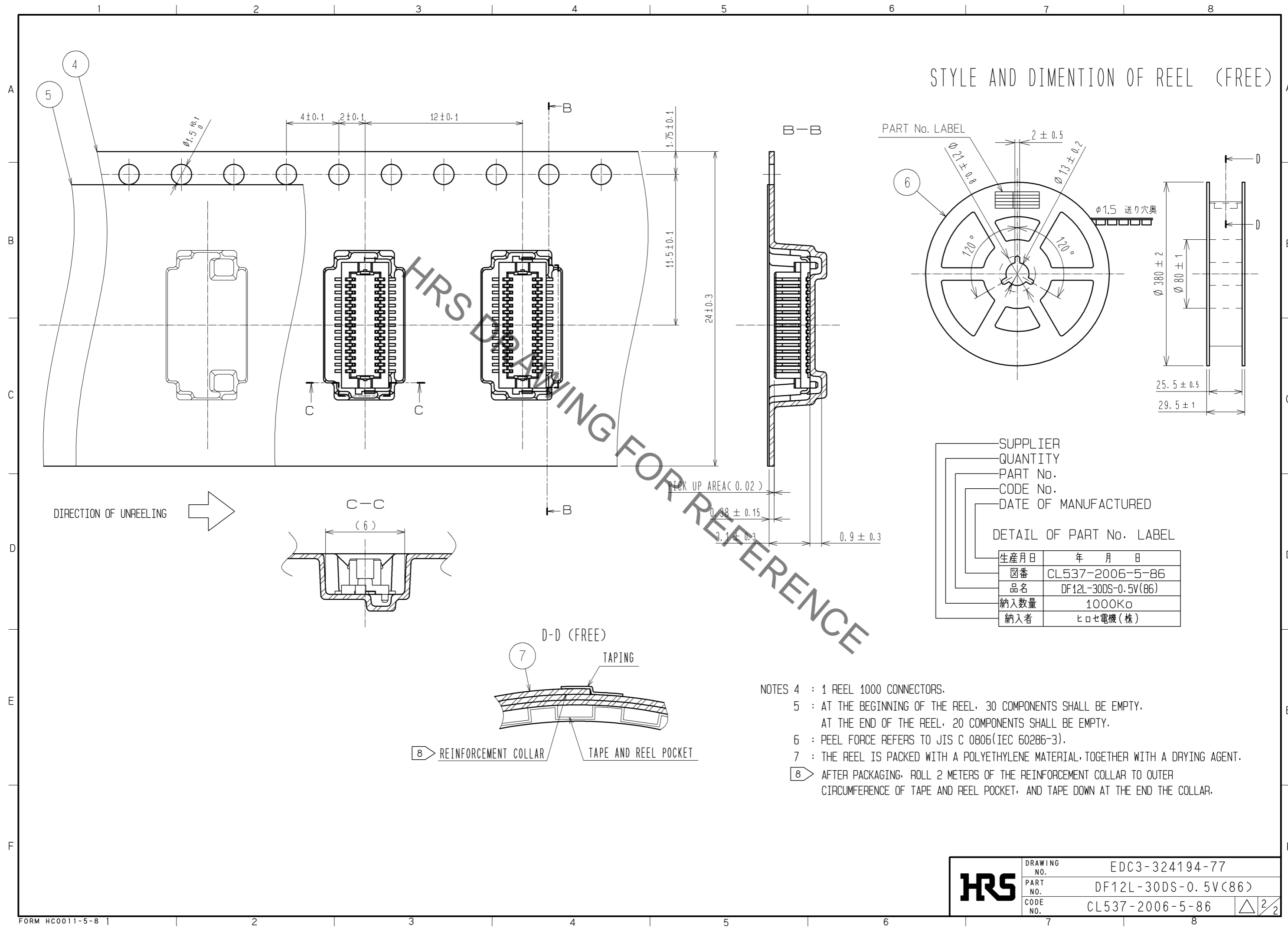
2 : IF THERE IS PATTERN ON Hatched PART, THERE IS A POSSIBILITY THAT IT WILL MAKE CONTACT WITH THE LEADS.

3 : REINFORCED METAL FITTINGS AS FOLLOWS.

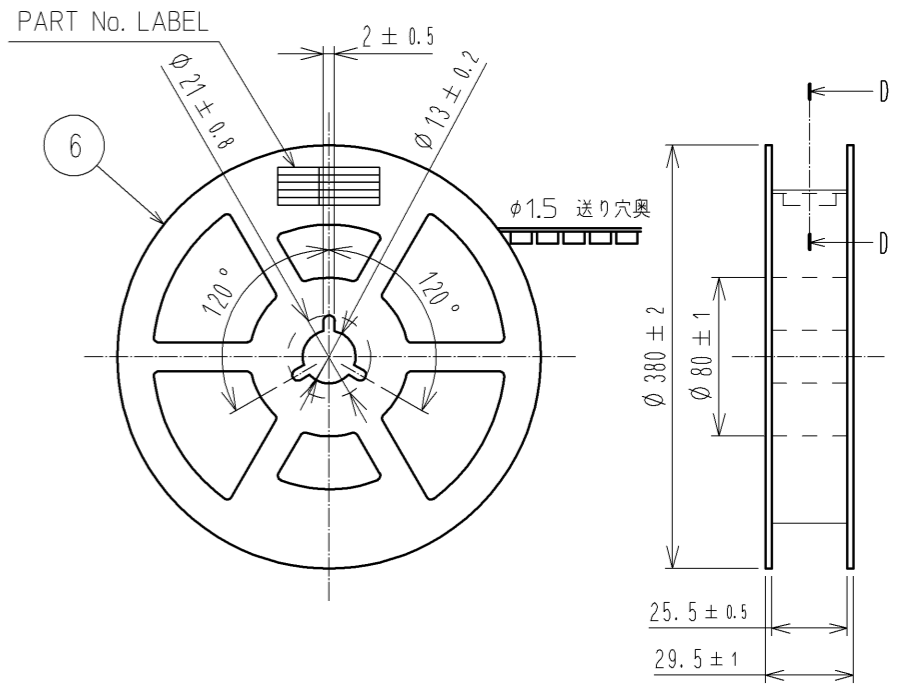


2	PHOSPHOR BRONZE	CONTACT AREA:GOLD PLATED 0.2μm min LEAD AREA:GOLD PLATED 0.015μm min (OTHERS)UNDER PLATING-NICKEL PLATED 2μm min	7	PS	CLEAR(REINFORCEMENT COLLAR)			
1	LCP	BLACK, UL94V-0	6	PS	BLACK(PLASTIC REEL)			
			5	POLYESTER	CLEAR(COVER TAPE)			
			4	PS	CLEAR(EMBOSSED CARRIER TAPE)			
			3	BRASS	TIN PLATED 2μm min (UNDER PLATING)-NICKEL 1μm min			
NO.	MATERIAL	FINISH . REMARKS	NO.	MATERIAL	FINISH . REMARKS			
UNITS mm		SCALE 5 : 1		COUNT	DESCRIPTION OF REVISIONS	DESIGNED	CHECKED	DATE
<b>HRS</b> HIROSE ELECTRIC CO., LTD.		APPROVED : KH. IKEDA 13.12.16	DRAWING NO. EDC3-324194-77					
		CHECKED : YH. MICHIDA 13.12.16	PART NO. DF12L-30DS-0.5V(86)					
		DESIGNED : YN. SAKAMOTO 13.12.16	CODE NO. CL537-2006-5-86					
		DRAWN : YN. SAKAMOTO 13.12.16						

Jun.1.2021 Copyright 2021 HIROSE ELECTRIC CO., LTD. All Rights Reserved.  
 In case of consideration for using Automotive equipment / device which demand high reliability, kindly contact our sales window correspondents.



STYLE AND DIMENTION OF REEL (FREE)



SUPPLIER  
 QUANTITY  
 PART No.  
 CODE No.  
 DATE OF MANUFACTURED

DETAIL OF PART No. LABEL

生産月日	年 月 日
図番	CL537-2006-5-86
品名	DF12L-30DS-0.5V(86)
納入数量	1000K $\alpha$
納入者	ヒロセ電機(株)

- NOTES 4 : 1 REEL 1000 CONNECTORS.  
 5 : AT THE BEGINNING OF THE REEL, 30 COMPONENTS SHALL BE EMPTY.  
 AT THE END OF THE REEL, 20 COMPONENTS SHALL BE EMPTY.  
 6 : PEEL FORCE REFERS TO JIS C 0806(IEC 60286-3).  
 7 : THE REEL IS PACKED WITH A POLYETHYLENE MATERIAL, TOGETHER WITH A DRYING AGENT.  
 8 : AFTER PACKAGING, ROLL 2 METERS OF THE REINFORCEMENT COLLAR TO OUTER CIRCUMFERENCE OF TAPE AND REEL POCKET, AND TAPE DOWN AT THE END THE COLLAR.

<b>HRS</b>	DRAWING NO.	EDC3-324194-77
	PART NO.	DF12L-30DS-0.5V(86)
	CODE NO.	CL537-2006-5-86
		$\triangle$ 2/2

# Mouser Electronics

Authorized Distributor

Click to View Pricing, Inventory, Delivery & Lifecycle Information:

[Hirose Electric:](#)

[DF12L-30DS-0.5V\(86\)](#)