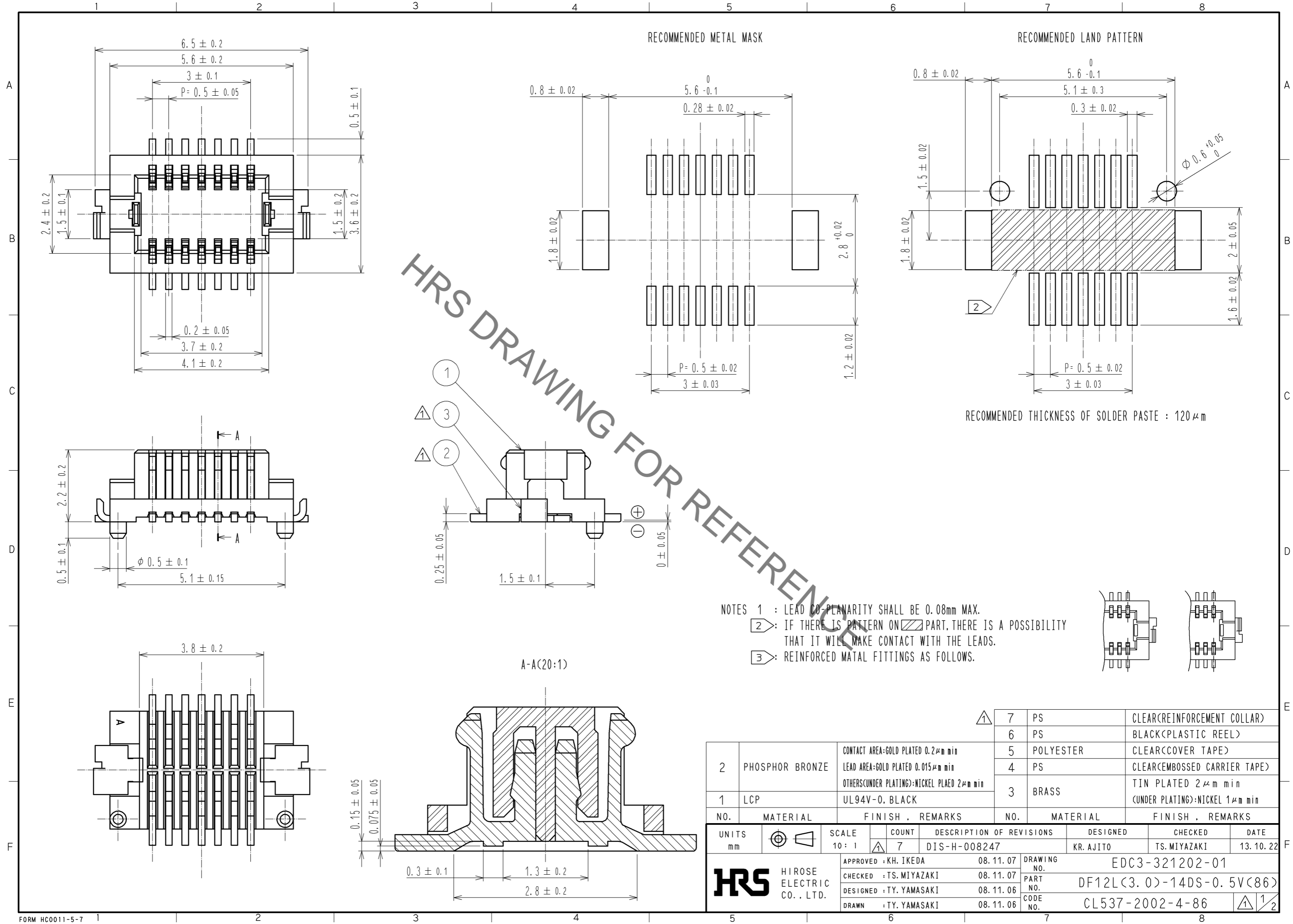
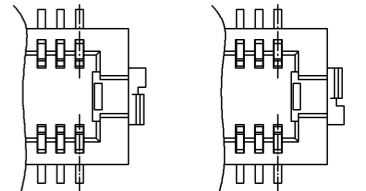


Sep.1.2021 Copyright 2021 HIROSE ELECTRIC CO., LTD. All Rights Reserved.
In case of consideration for using Automotive equipment / device which demand high reliability, kindly contact our sales window correspondents.



- NOTES
- 1 : LEAD CO-PLANARITY SHALL BE 0.08mm MAX.
 - 2 : IF THERE IS PATTERN ON PART, THERE IS A POSSIBILITY THAT IT WILL MAKE CONTACT WITH THE LEADS.
 - 3 : REINFORCED METAL FITTINGS AS FOLLOWS.

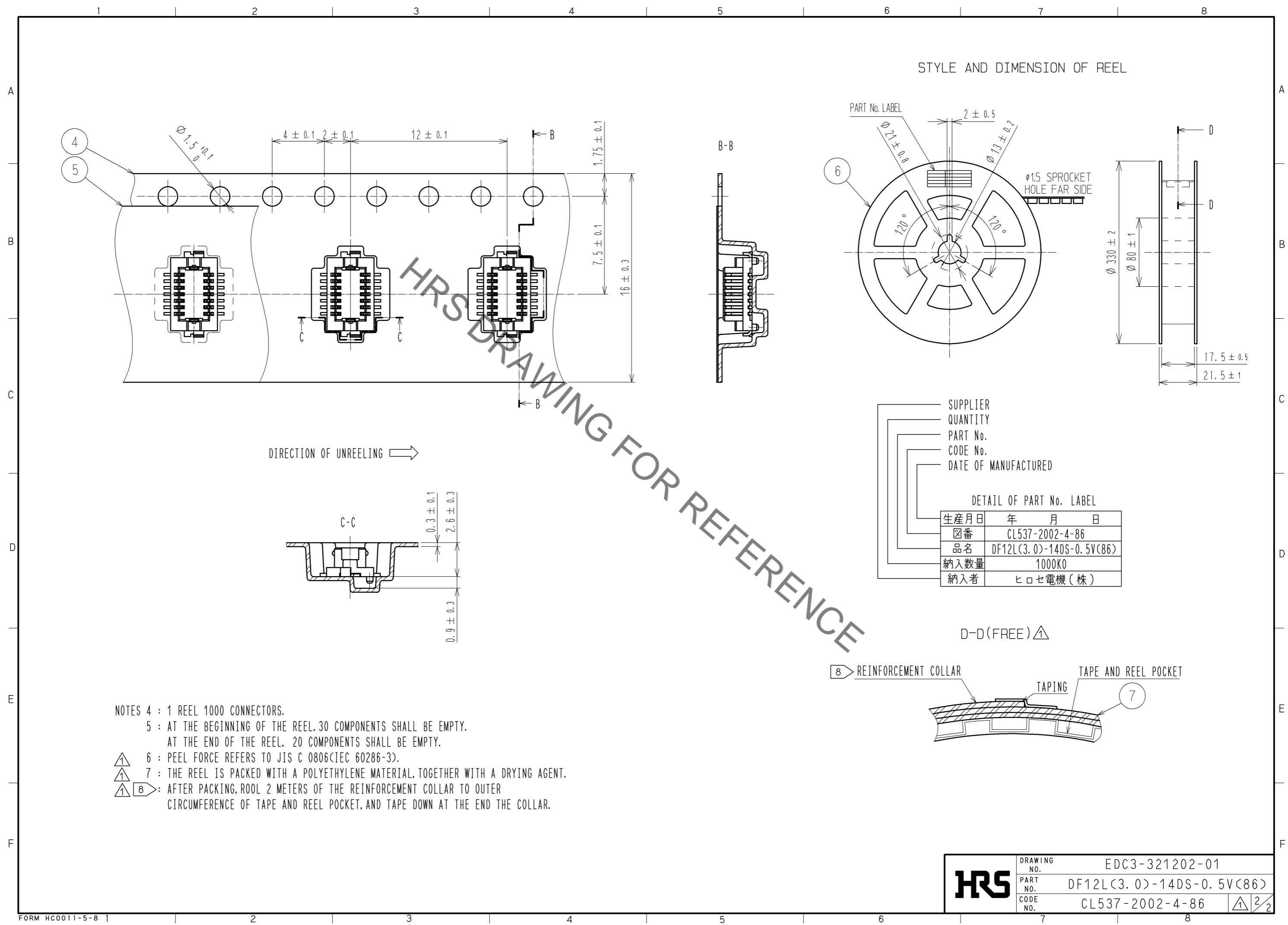


NO.	MATERIAL	FINISH	REMARKS	NO.	MATERIAL	FINISH	REMARKS
2	PHOSPHOR BRONZE		CONTACT AREA:GOLD PLATED 0.2µm min LEAD AREA:GOLD PLATED 0.015µm min OTHERS(UNDER PLATING):NICKEL PLATED 2µm min	7	PS		CLEAR(REINFORCEMENT COLLAR)
1	LCP		UL94V-0, BLACK	6	PS		BLACK(PLASTIC REEL)
				5	POLYESTER		CLEAR(COVER TAPE)
				4	PS		CLEAR(EMBOSSED CARRIER TAPE)
				3	BRASS		TIN PLATED 2µm min (UNDER PLATING):NICKEL 1µm min

UNITS	SCALE	COUNT	DESCRIPTION OF REVISIONS	DESIGNED	CHECKED	DATE
mm	10:1	7	DIS-H-008247	KR. AJITO	TS. MIYAZAKI	13.10.22

APPROVED : KH. IKEDA	08.11.07	DRAWING NO.	EDC3-321202-01
CHECKED : TS. MIYAZAKI	08.11.07	PART NO.	DF12L(3.0)-14DS-0.5V(86)
DESIGNED : TY. YAMASAKI	08.11.06	CODE NO.	CL537-2002-4-86
DRAWN : TY. YAMASAKI	08.11.06		

Sep.1.2021 Copyright 2021 HIROSE ELECTRIC CO., LTD. All Rights Reserved.
In case of consideration for using Automotive equipment / device which demand high reliability, kindly contact our sales window correspondents.



- NOTES
- 4 : 1 REEL 1000 CONNECTORS.
 - 5 : AT THE BEGINNING OF THE REEL, 30 COMPONENTS SHALL BE EMPTY.
AT THE END OF THE REEL, 20 COMPONENTS SHALL BE EMPTY.
 - △ 6 : PEEL FORCE REFERS TO JIS C 0806(IEC 60286-3).
 - △ 7 : THE REEL IS PACKED WITH A POLYETHYLENE MATERIAL, TOGETHER WITH A DRYING AGENT.
 - △ 8 : AFTER PACKING, ROLL 2 METERS OF THE REINFORCEMENT COLLAR TO OUTER CIRCUMFERENCE OF TAPE AND REEL POCKET, AND TAPE DOWN AT THE END THE COLLAR.

SUPPLIER
QUANTITY
PART No.
CODE No.
DATE OF MANUFACTURED

DETAIL OF PART No. LABEL

生産月日	年	月	日
箱番	CL537-2002-4-86		
品名	DF12L(3.0)-14DS-0.5V(86)		
納入数量	1000K0		
納入者	ヒロセ電機(株)		

HRS	DRAWING NO.	EDC3-321202-01
	PART NO.	DF12L(3.0)-14DS-0.5V(86)
	CODE NO.	CL537-2002-4-86
		△ 2/2

Mouser Electronics

Authorized Distributor

Click to View Pricing, Inventory, Delivery & Lifecycle Information:

[Hirose Electric:](#)

[DF12L\(3.0\)-14DS-0.5V\(86\)](#)