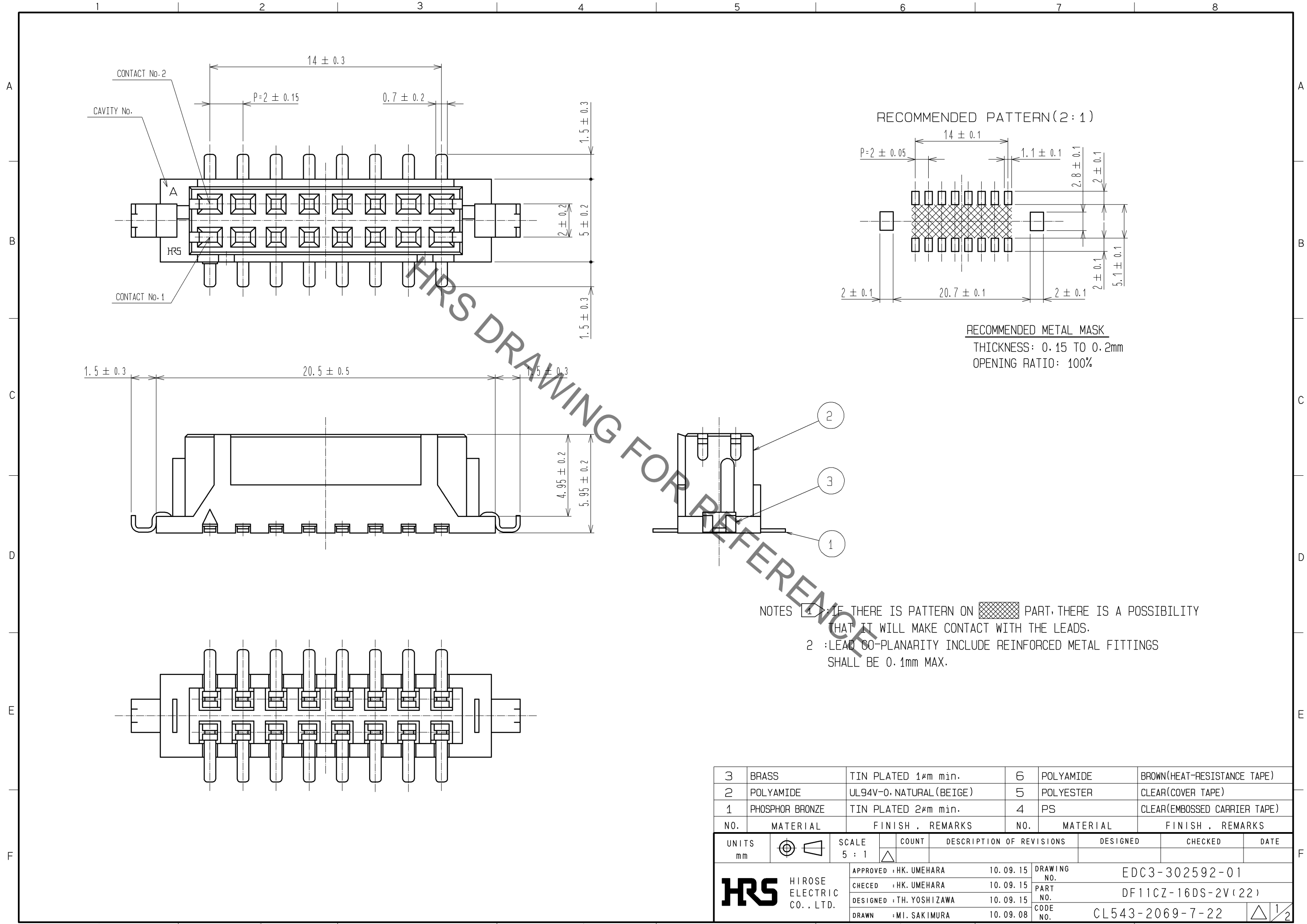


Aug.1.2021 Copyright 2021 HIROSE ELECTRIC CO., LTD. All Rights Reserved.  
In case of consideration for using Automotive equipment / device which demand high reliability, kindly contact our sales window correspondents.



RECOMMENDED METAL MASK  
THICKNESS: 0.15 TO 0.2mm  
OPENING RATIO: 100%

NOTES 1: IF THERE IS PATTERN ON [Hatched Area] PART, THERE IS A POSSIBILITY THAT IT WILL MAKE CONTACT WITH THE LEADS.  
2: LEAD CO-PLANARITY INCLUDE REINFORCED METAL FITTINGS SHALL BE 0.1mm MAX.

3	BRASS	TIN PLATED 1μm min.	6	POLYAMIDE	BROWN(HEAT-RESISTANCE TAPE)
2	POLYAMIDE	UL94V-0, NATURAL (BEIGE)	5	POLYESTER	CLEAR(COVER TAPE)
1	PHOSPHOR BRONZE	TIN PLATED 2μm min.	4	PS	CLEAR(EMBOSSED CARRIER TAPE)
NO.	MATERIAL	FINISH . REMARKS	NO.	MATERIAL	FINISH . REMARKS
UNITS mm		SCALE 5 : 1	COUNT △	DESCRIPTION OF REVISIONS	
DESIGNED		CHECKED		DATE	
APPROVED : HK. UMEHARA			10. 09. 15		
CHECED : HK. UMEHARA			10. 09. 15		
DESIGNED : TH. YOSHIKAWA			10. 09. 15		
DRAWN : MI. SAKIMURA			10. 09. 08		
DRAWING NO.				EDC3-302592-01	
PART NO.				DF11CZ-16DS-2V(22)	
CODE NO.				CL543-2069-7-22	



# Mouser Electronics

Authorized Distributor

Click to View Pricing, Inventory, Delivery & Lifecycle Information:

[Hirose Electric:](#)

[DF11CZ-16DS-2V\(22\)](#)