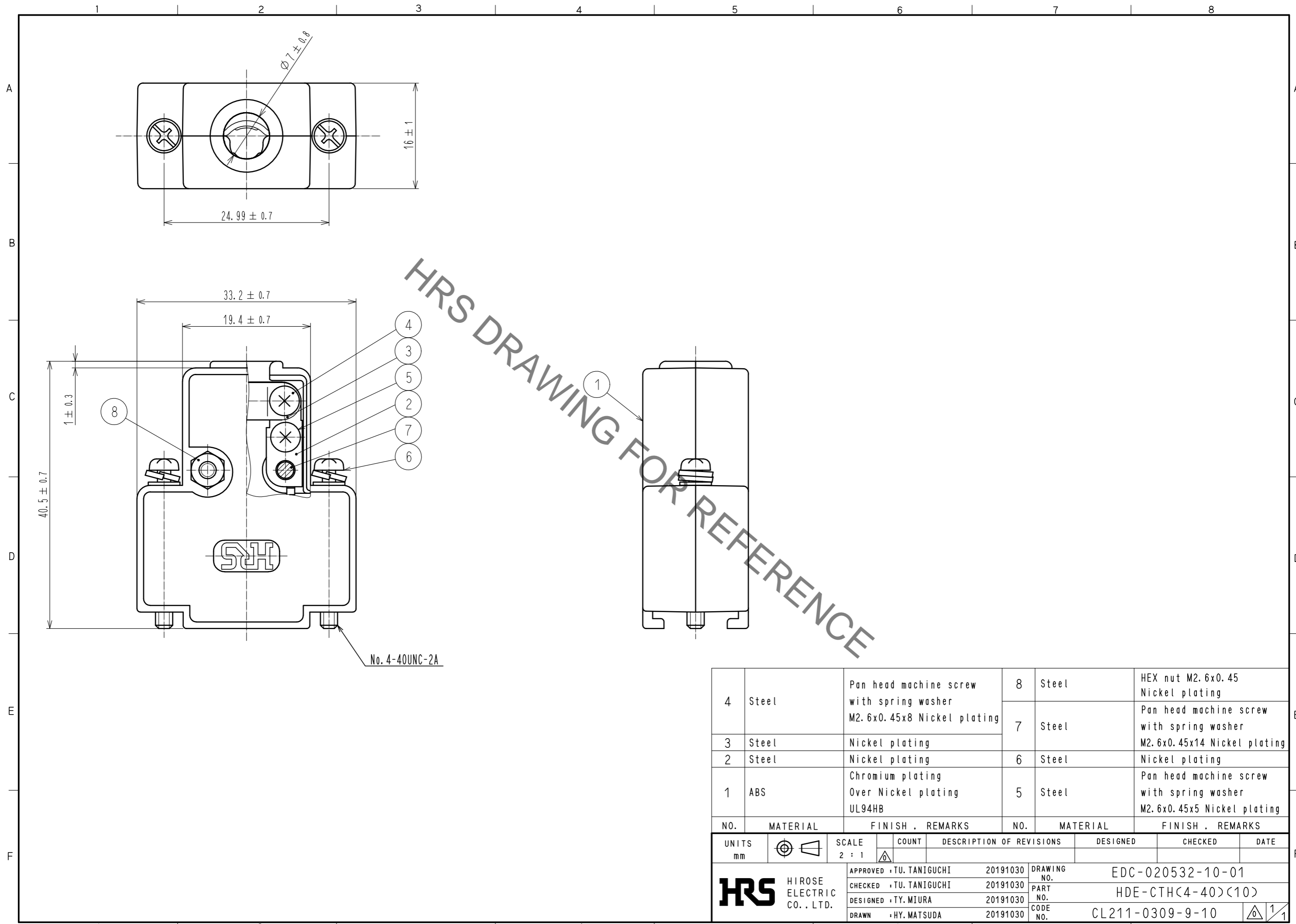


Sep.1.2021 Copyright 2021 HIROSE ELECTRIC CO., LTD. All Rights Reserved.  
In case of consideration for using Automotive equipment / device which demand high reliability, kindly contact our sales window correspondents.



| NO. | MATERIAL | FINISH . REMARKS  | NO. | MATERIAL | FINISH . REMARKS   |
|-----|----------|---|-----|----------|--|
| 4   | Steel    | Pan head machine screw with spring washer<br>M2.6x0.45x8 Nickel plating | 8   | Steel    | HEX nut M2.6x0.45<br>Nickel plating                                      |
| 3   | Steel    | Nickel plating  | 7   | Steel    | Pan head machine screw with spring washer<br>M2.6x0.45x14 Nickel plating |
| 2   | Steel    | Nickel plating  | 6   | Steel    | Nickel plating   |
| 1   | ABS      | Chromium plating<br>Over Nickel plating<br>UL94HB                       | 5   | Steel    | Pan head machine screw with spring washer<br>M2.6x0.45x5 Nickel plating  |

| UNITS                     | SCALE | COUNT | DESCRIPTION OF REVISIONS          | DESIGNED                     | CHECKED | DATE |
|---------------------------|-------|-------|-----------------------------------|------------------------------|---------|------|
| mm                        | 2 : 1 | △     |                                   |                              |         |      |
|                           |       |       | APPROVED : TU. TANIGUCHI 20191030 | DRAWING NO. EDC-020532-10-01 |         |      |
| HIROSE ELECTRIC CO., LTD. |       |       | CHECKED : TU. TANIGUCHI 20191030  | PART NO. HDE-CTH(4-40)(10)   |         |      |
|                           |       |       | DESIGNED : TY. MIURA 20191030     | CODE NO. CL211-0309-9-10     |         |      |
|                           |       |       | DRAWN : HY. MATSUDA 20191030      | △ 1/1                        |         |      |

# Mouser Electronics

Authorized Distributor

Click to View Pricing, Inventory, Delivery & Lifecycle Information:

[Hirose Electric:](#)

[HDE-CTH\(4-40\)\(10\)](#)