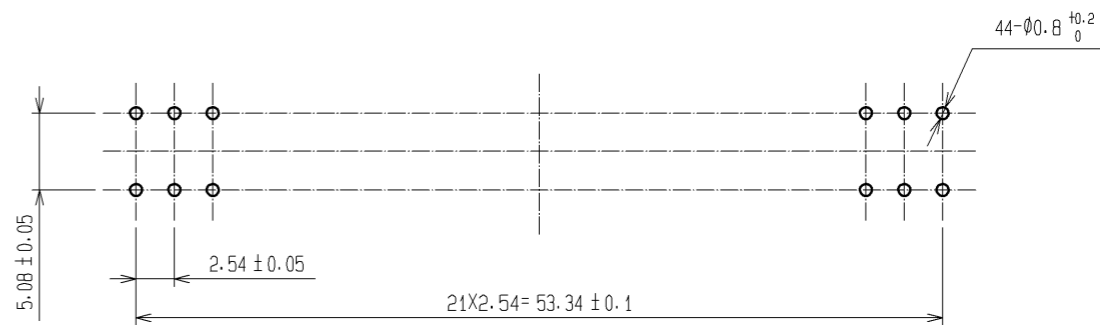
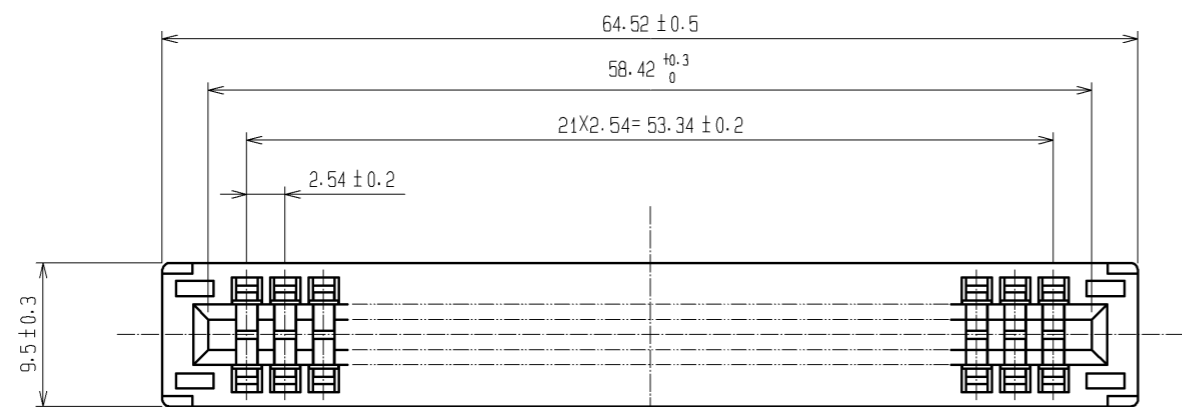
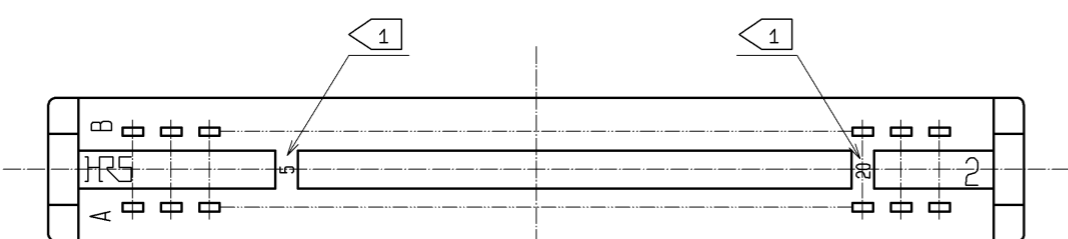
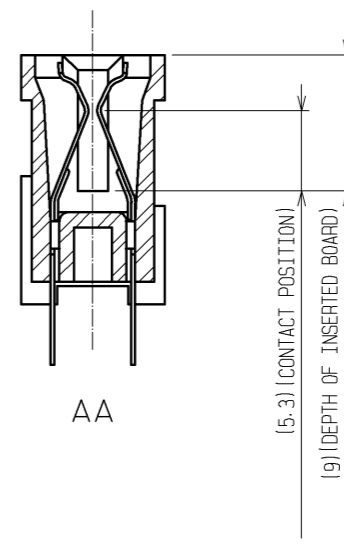
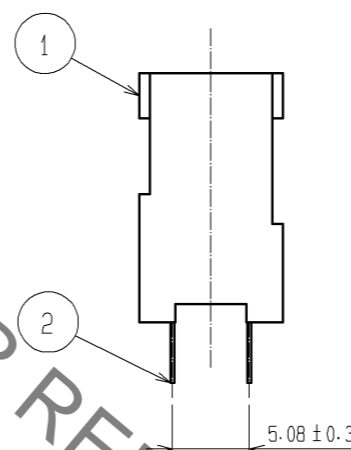
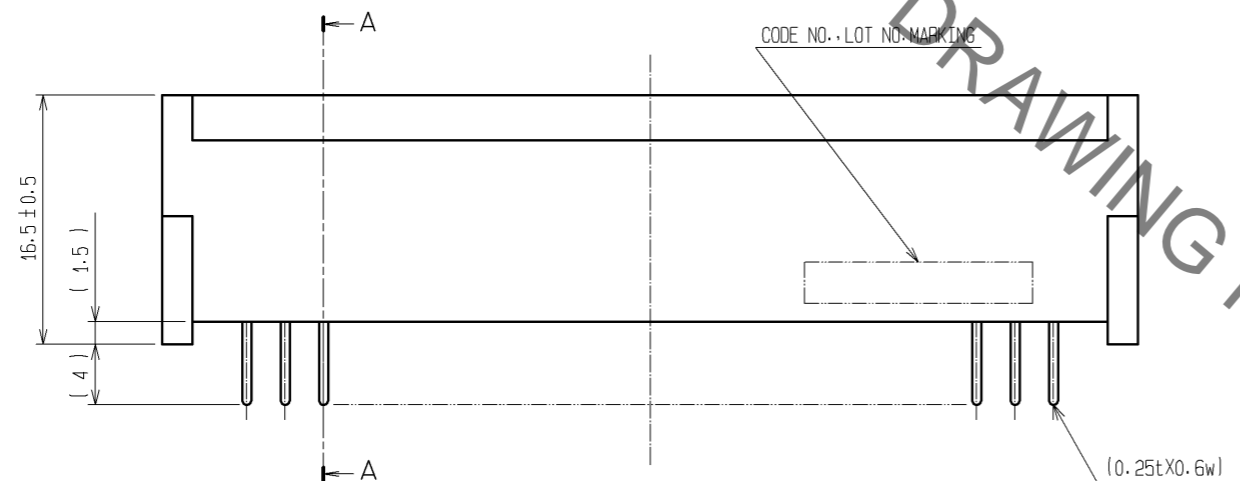


Aug.1.2021 Copyright 2021 HIROSE ELECTRIC CO., LTD. All Rights Reserved.
 In case of consideration for using Automotive equipment / device which demand high reliability, kindly contact our sales window correspondents.



RECOMMENDED PC BOARD HOLE PATTERN (t=1.6±0.1)



NOTE 1 CONTACT NO. (5, 10, 15, 20)
 2 A POLARIZING KEY INSERTED BETWEEN THE FOLLOWING CONTACT POSITIONS.
 (5-6), (10-11), (15-16), (20-21)

2	PHOSPHOR BRONZE	CONTACT AREA: Ni2.5μm+Au0.05μm DIP AREA: Ni2.5μm+Sn2μm
1	PBT	BLACK UL94V-0
NO.	MATERIAL	FINISH, REMARKS

UNITS mm			SCALE 2 : 1	COUNT 	DESCRIPTION OF REVISIONS	DESIGNED	CHECKED	DATE
HRS HIROSE ELECTRIC CO., LTD.		APPROVED : KI. AKIYAMA	07. 12. 10	DRAWING NO.	EDC3-017839-01			
		CHECED : SI. TOMIOKA	07. 12. 06	PART NO.	CR22A-44D-2. 54DS (70)			
		DESIGNED : NH. SUGITA	07. 12. 06	CODE NO.	CL522-0002-4-70			
		DRAWN : NN. ONDA	07. 12. 06					

Mouser Electronics

Authorized Distributor

Click to View Pricing, Inventory, Delivery & Lifecycle Information:

[Hirose Electric:](#)

[CR22A-44D-2.54DS\(70\)](#)