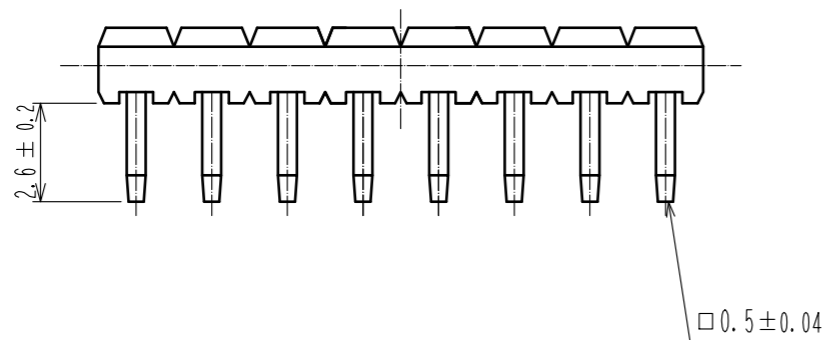
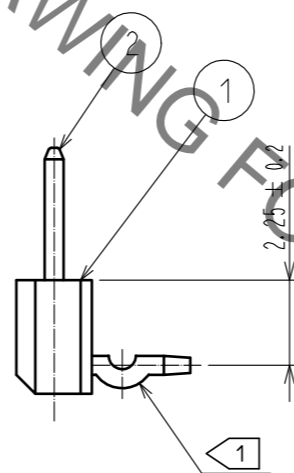
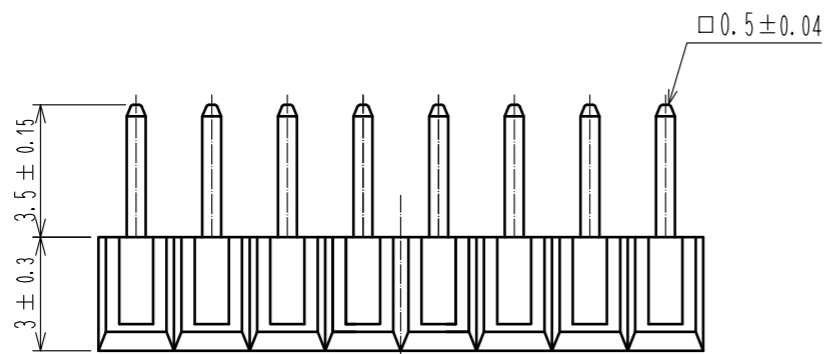
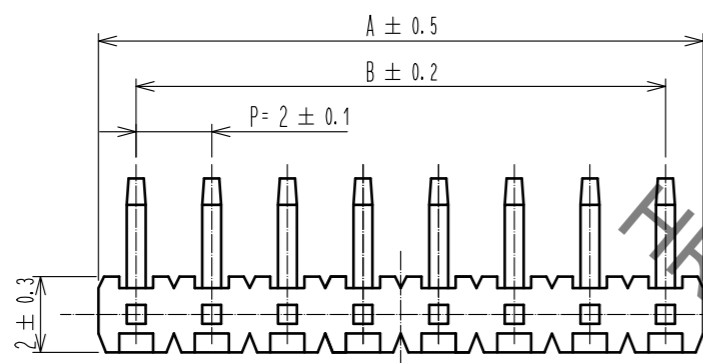
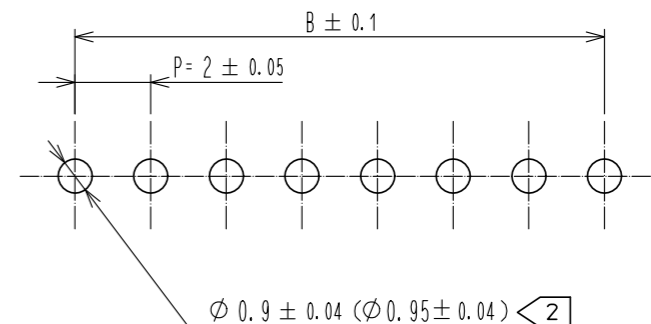


Jul.1.2021 Copyright 2021 HIROSE ELECTRIC CO., LTD. All Rights Reserved.  
 In case of consideration for using Automotive equipment / device which demand high reliability, kindly contact our sales window correspondents.



RECOMMENDED PC BOARD HOLE PATTERN

(PCB THICKNESS : t=1.6)



PART NO.	CODE NO.	PIN	A	B	KINKED POSITION $\triangleleft 1$
A4B- 2PA-2DS(51)	CL622-0351-1-51	2	4	2	2PINS
A4B- 3PA-2DS(51)	CL622-0352-4-51	3	6	4	1 OR 2 PINS ON EVERY OTHER PINS
A4B- 4PA-2DS(51)	CL622-0353-7-51	4	8	6	2 PINS ON EVERY OTHER PINS
A4B- 5PA-2DS(51)	CL622-0354-0-51	5	10	8	2 OR 3 PINS ON EVERY OTHER PINS
A4B- 6PA-2DS(51)	CL622-0355-2-51	6	12	10	3 PINS ON EVERY OTHER PINS
A4B- 7PA-2DS(51)	CL622-0356-5-51	7	14	12	3 OR 4 PINS ON EVERY OTHER PINS
A4B- 8PA-2DS(51)	CL622-0357-8-51	8	16	14	4 PINS ON EVERY OTHER PINS
A4B- 9PA-2DS(51)	CL622-0358-0-51	9	18	16	4 OR 5 PINS ON EVERY OTHER PINS
A4B-10PA-2DS(51)	CL622-0359-3-51	10	20	18	5 PINS ON EVERY OTHER PINS
A4B-11PA-2DS(51)	CL622-0360-2-51	11	22	20	5 OR 6 PINS ON EVERY OTHER PINS
A4B-12PA-2DS(51)	CL622-0361-5-51	12	24	22	6 PINS ON EVERY OTHER PINS
A4B-13PA-2DS(51)	CL622-0362-8-51	13	26	24	6 OR 7 PINS ON EVERY OTHER PINS
A4B-14PA-2DS(51)	CL622-0363-0-51	14	28	26	7 PINS ON EVERY OTHER PINS
A4B-15PA-2DS(51)	CL622-0364-3-51	15	30	28	7 OR 8 PINS ON EVERY OTHER PINS
A4B-16PA-2DS(51)	CL622-0365-6-51	16	32	30	8 PINS ON EVERY OTHER PINS

NOTE  $\triangleleft 1$  KINKED POSITION IS SHOWN IN THE TABLE.  
 $\triangleleft 2$  THROUGH HOLE DIMENSION SHALL BE  $\phi 0.95 \pm 0.04$  WHEN NUMBER OF POSITIONS IS MORE THAN 14.

1	POLYAMIDE	BLACK	UL94V-0	2	BRASS	CONTACT AREA : GOLD FLASH		
						DIP AREA : TIN-PLATING 2 $\mu$ m		
						UNDER PLATING : NICKEL 2 $\mu$ m		
NO.	MATERIAL	FINISH	REMARKS	NO.	MATERIAL	FINISH . REMARKS		
UNITS	$\odot$ $\triangleleft$	SCALE	COUNT	DESCRIPTION OF REVISIONS		DESIGNED	CHECKED	DATE
mm		5 : 1	$\triangleleft$					
<b>HRS</b> HIROSE ELECTRIC CO., LTD.		APPROVED : NH. NAKATA	17. 04. 10	DRAWING NO.		EDC-375931-00-00		
		CHECKED : HT. YAMAGUCHI	17. 04. 10	PART NO.		A4B- * PA-2DS(51)		
		DESIGNED : HR. NAGAYASU	17. 04. 10	CODE NO.		CL622		
		DRAWN : HR. NAGAYASU	17. 04. 10			$\triangleleft 1$		

# Mouser Electronics

Authorized Distributor

Click to View Pricing, Inventory, Delivery & Lifecycle Information:

[Hirose Electric:](#)

[A4B-6PA-2DS\(51\)](#)