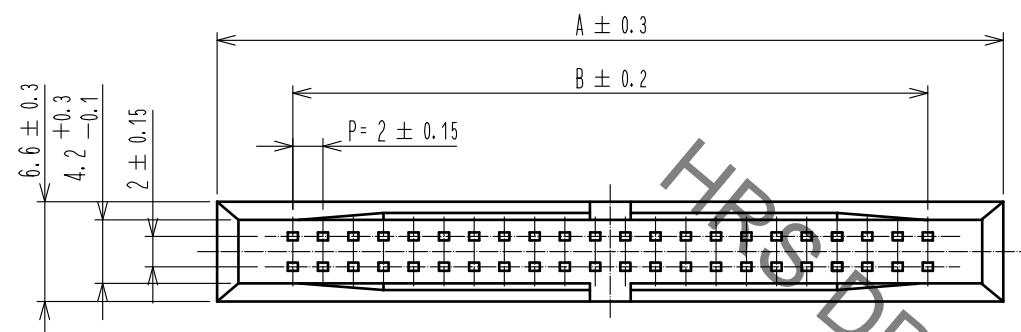
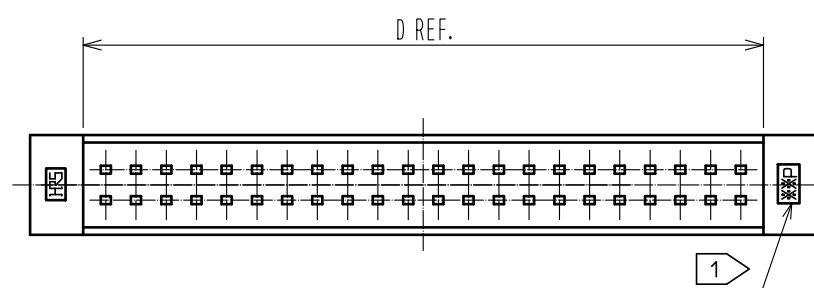
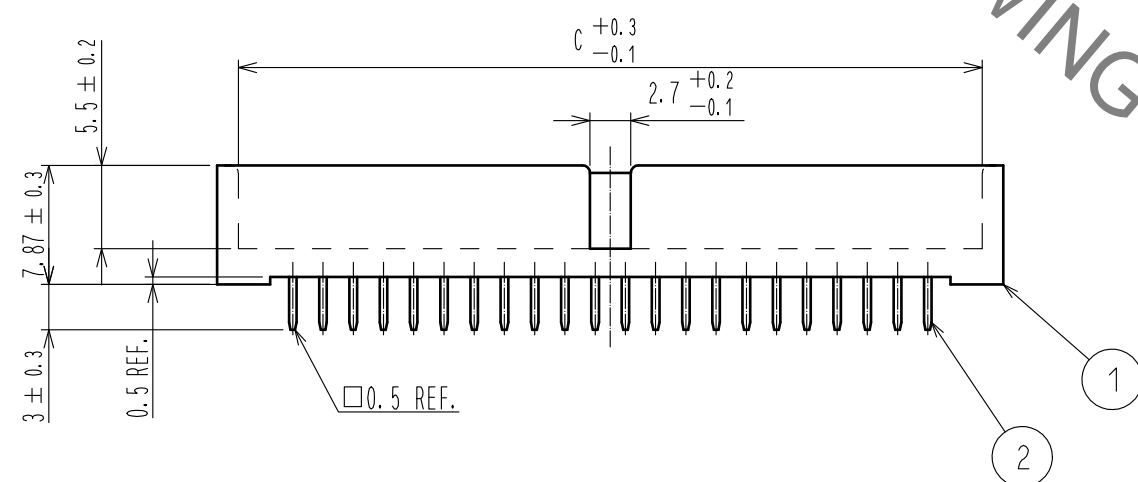
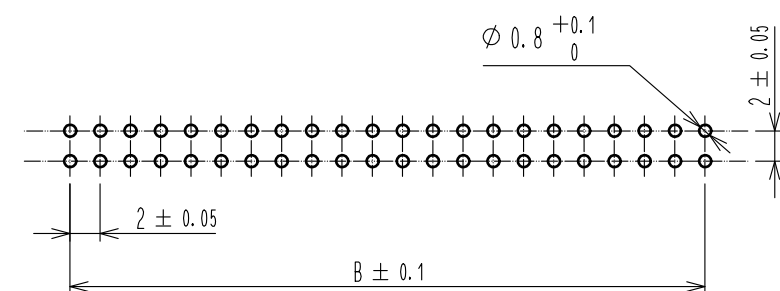


Jul.1.2021 Copyright 2021 HIROSE ELECTRIC CO., LTD. All Rights Reserved.
 In case of consideration for using Automotive equipment / device which demand high reliability, kindly contact our sales window correspondents.



RECOMMENDED PC BOARD HOLE PATTERN



| PART NO. | CODE NO. | PIN | A | B | C | D |
|-------------------|-----------------|-----|----|----|------|----|
| A3E-44PA-2DSA(51) | CL621-0911-8-51 | 44 | 52 | 42 | 49.2 | 45 |
| A3E-50PA-2DSA(51) | CL621-0914-6-51 | 50 | 58 | 48 | 55.2 | 51 |

注 1 ※※ INDICATES THE NUMBER OF CONTACTS.

| 1 | POLYAMIDE | BLACK | UL94V-0 | 2 | BRASS | CONTACT AREA : GOLD 0.2 μ m DIP AREA : TIN-PLATING 2 μ m UNDER PLATING : NICKEL 2.5 μ m | | |
|--------------------------------------|-----------|-------------------------|------------|--------------------------|----------|---|---------|------|
| NO. | MATERIAL | FINISH | REMARKS | NO. | MATERIAL | FINISH . REMARKS | | |
| UNITS mm | | SCALE 2 : 1 | COUNT | DESCRIPTION OF REVISIONS | | DESIGNED | CHECKED | DATE |
| HRS HIROSE ELECTRIC CO., LTD. | | APPROVED : NH. NAKATA | 17. 04. 10 | DRAWING NO. | | EDC-376066-00-00 | | |
| | | CHECKED : HT. YAMAGUCHI | 17. 04. 10 | PART NO. | | A3E-*PA-2DSA(51) | | |
| | | DESIGNED : HR. NAGAYASU | 17. 04. 10 | CODE NO. | | CL621 | | |
| | | DRAWN : HR. NAGAYASU | 17. 04. 10 | | | 1/1 | | |

Mouser Electronics

Authorized Distributor

Click to View Pricing, Inventory, Delivery & Lifecycle Information:

[Hirose Electric:](#)

[A3E-50PA-2DSA\(51\)](#)