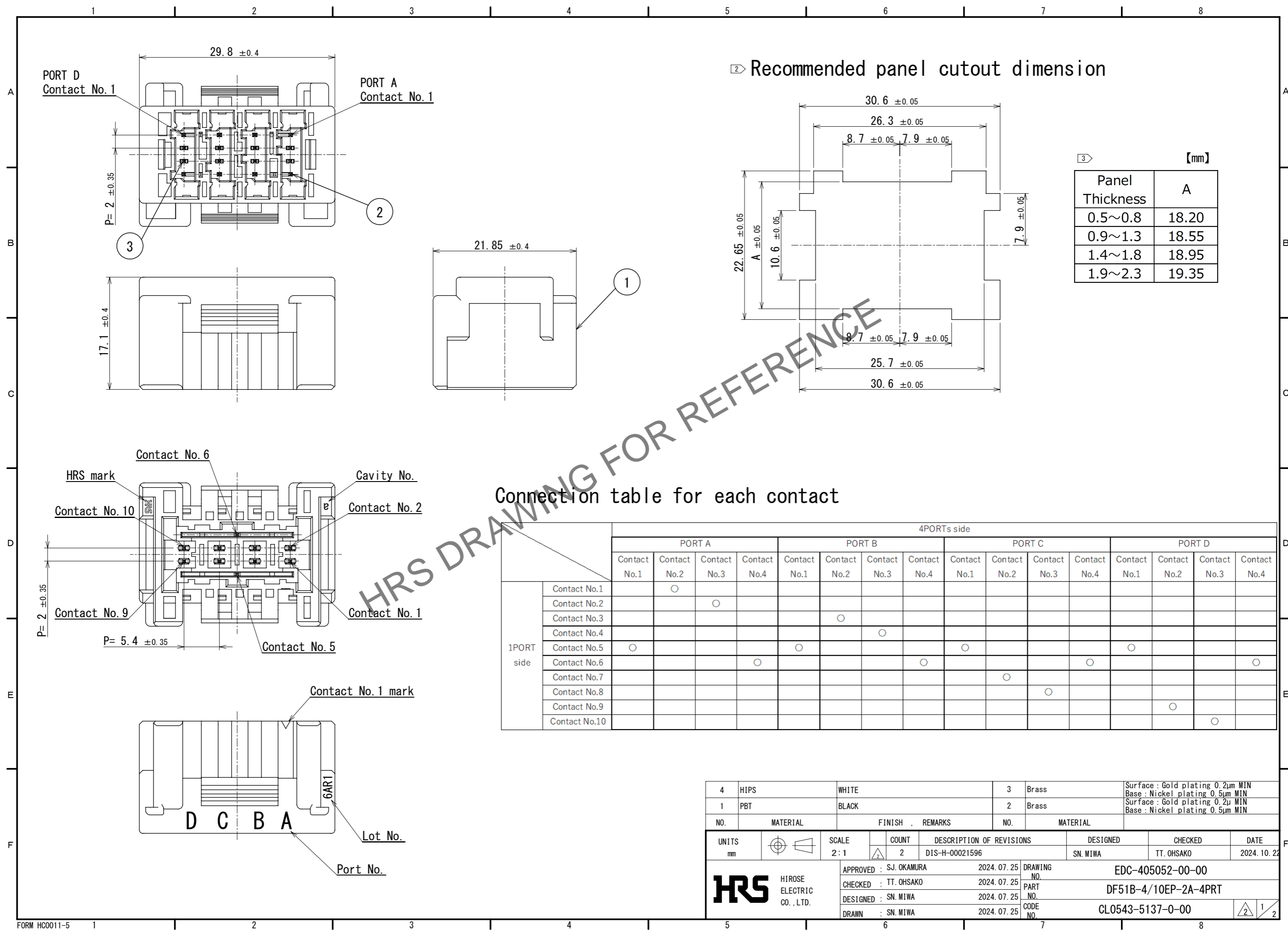


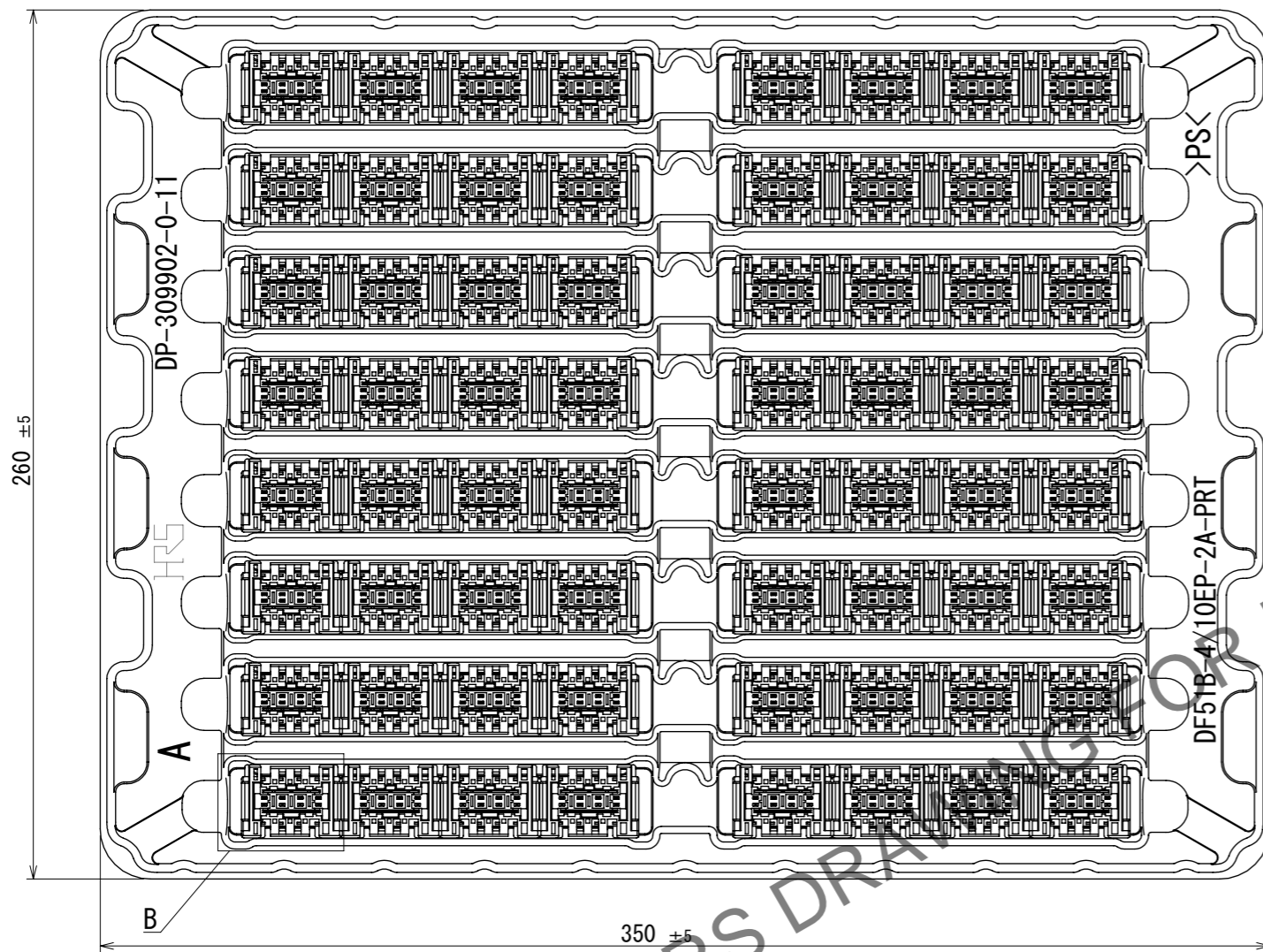
Jan.1.2025 Copyright 2025 HIROSE ELECTRIC CO., LTD. All Rights Reserved.
In case of consideration for using Automotive equipment / device which demand high reliability, kindly contact our sales window correspondents.



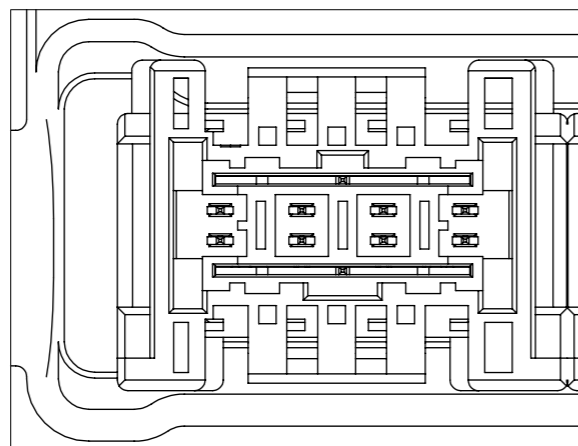
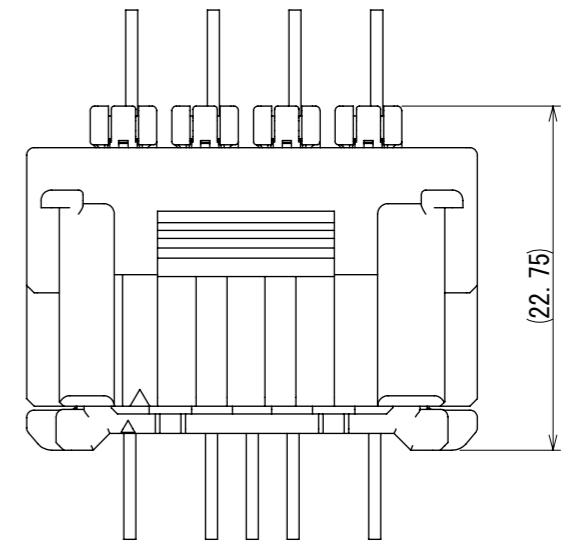
4	HIPS	WHITE	3	Brass	Surface : Gold plating 0.2μm MIN Base : Nickel plating 0.5μm MIN						
1	PBT	BLACK	2	Brass	Surface : Gold plating 0.2μm MIN Base : Nickel plating 0.5μm MIN						
NO.	MATERIAL	FINISH	REMARKS	NO.	MATERIAL						
UNITS	mm	SCALE	2:1	COUNT	2	DESCRIPTION OF REVISIONS	DESIGNED	CHECKED	DATE		
				DIS-H-00021596		SN. MIWA		TT. OHSAKO		2024. 10. 23	
APPROVED : SJ. OKAMURA		2024. 07. 25		DRAWING NO.		EDC-405052-00-00					
CHECKED : TT. OHSAKO		2024. 07. 25		PART NO.		DF51B-4/10EP-2A-4PRT					
DESIGNED : SN. MIWA		2024. 07. 25		CODE NO.		CL0543-5137-0-00					
DRAWN : SN. MIWA		2024. 07. 25									

Jan.1.2025 Copyright 2025 HIROSE ELECTRIC CO., LTD. All Rights Reserved.
 In case of consideration for using Automotive equipment / device which demand high reliability, kindly contact our sales window correspondents.

Packing diagram



Mating diagram



- Note 1. 256 pieces per box \triangle
- \square Use a surface that is free from dripping R on the panel hook.
 - \square Applicable panel thickness is 0.5mm to 2.3mm.
 - 4. Refer to these manuals for handling this connector.
 Cable assembly : ATAD-H0923-00
 Mating and unmating operation : ATAD-H0847-00
 - 5. There may be slight scratches or dents on the appearance, but this does not affect the function.
 - 6. UL (File No.E52653)
 C-UL (File No.E52653) authorization article



\triangle 8. Please refer to the technical specification (ETAP-H1063-01) for the packing type.

HRS	DRAWING NO.	EDC-405052-00-00	\triangle 2 / 2
	PART NO.	DF51B-4/10EP-2A-4PRT	
	CODE NO.	CL0543-5137-0-00	

Mouser Electronics

Authorized Distributor

Click to View Pricing, Inventory, Delivery & Lifecycle Information:

[Hirose Electric:](#)

[DF51B-4/10EP-2A-4PRT](#)