

Customer Information Sheet

DRAWING No.: M90C108950C

SHEET 2 OF 2

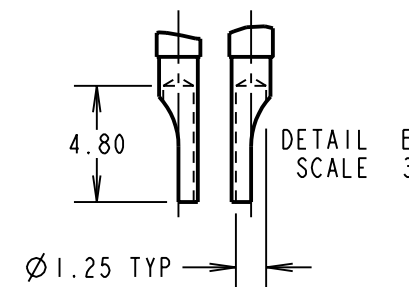
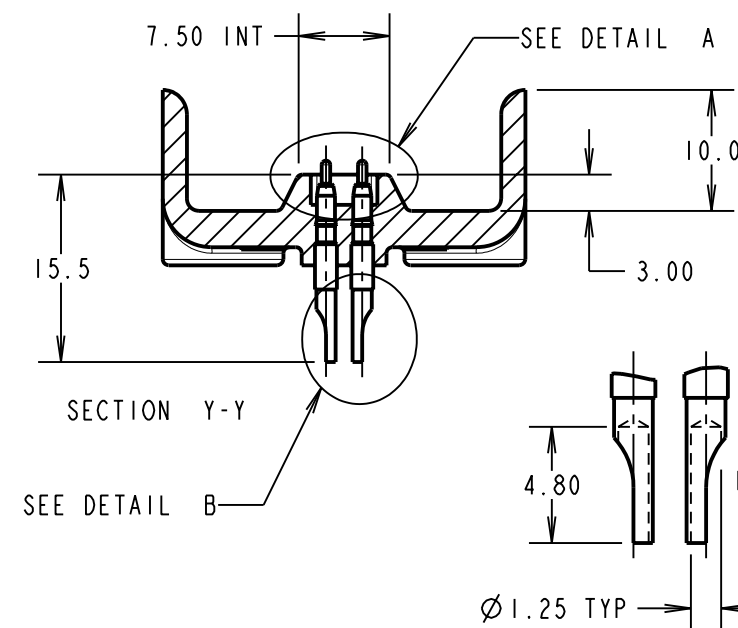
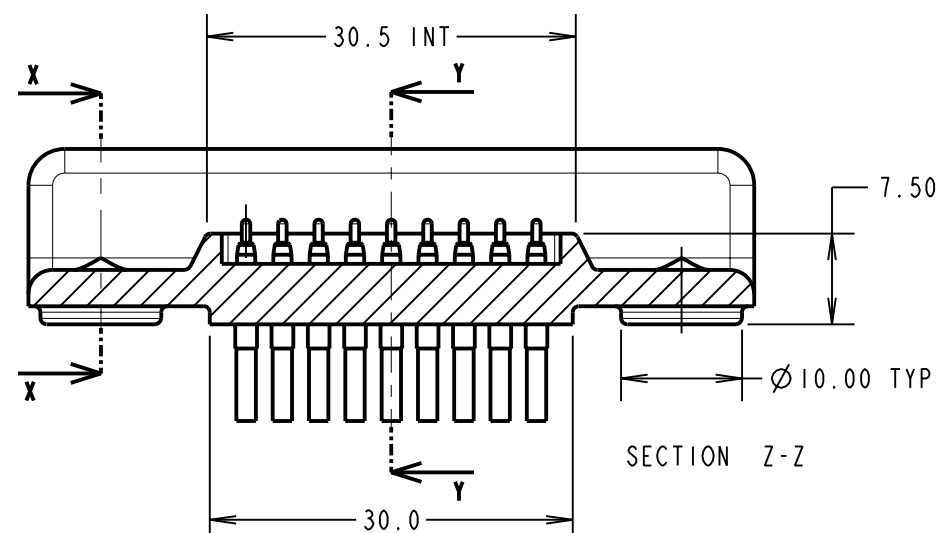
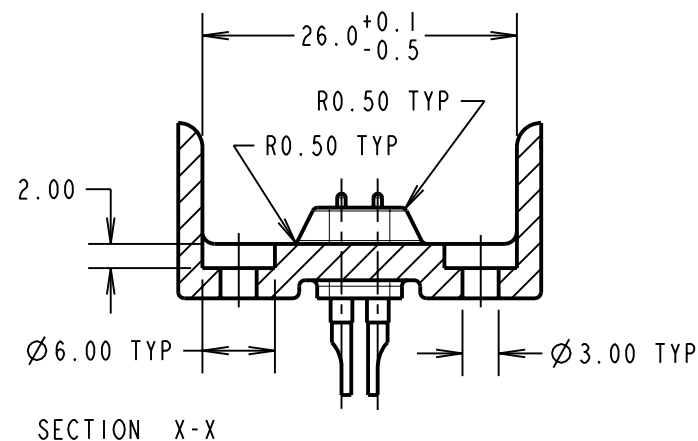
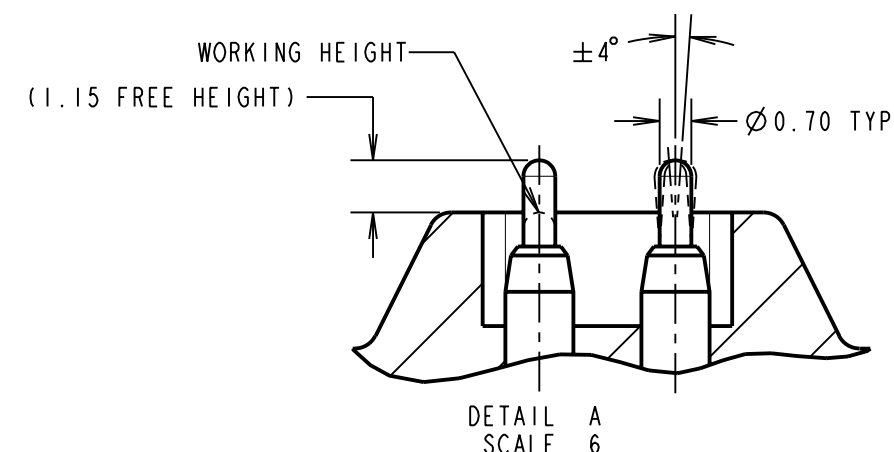
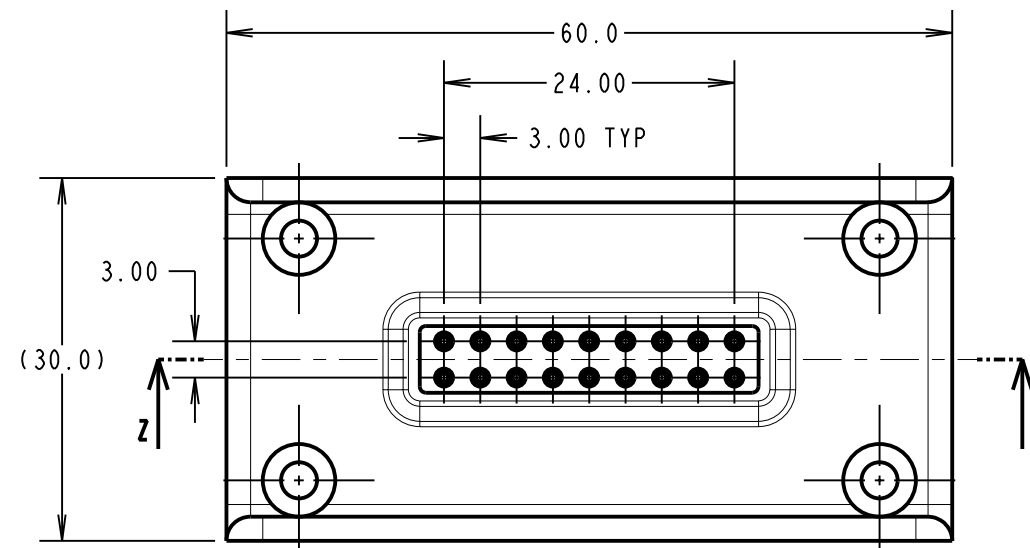
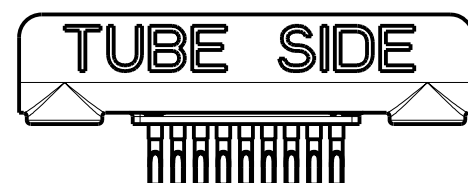
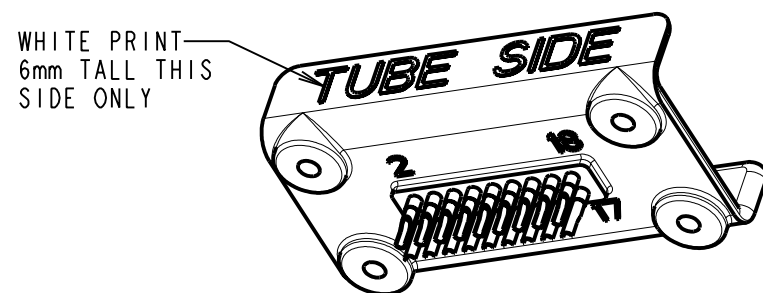
IF IN DOUBT - ASK

(C)

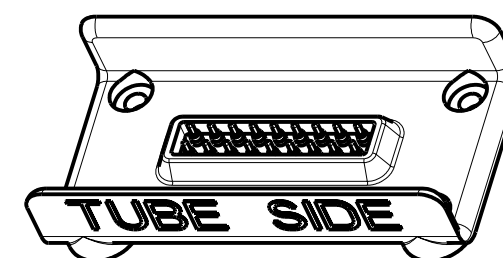
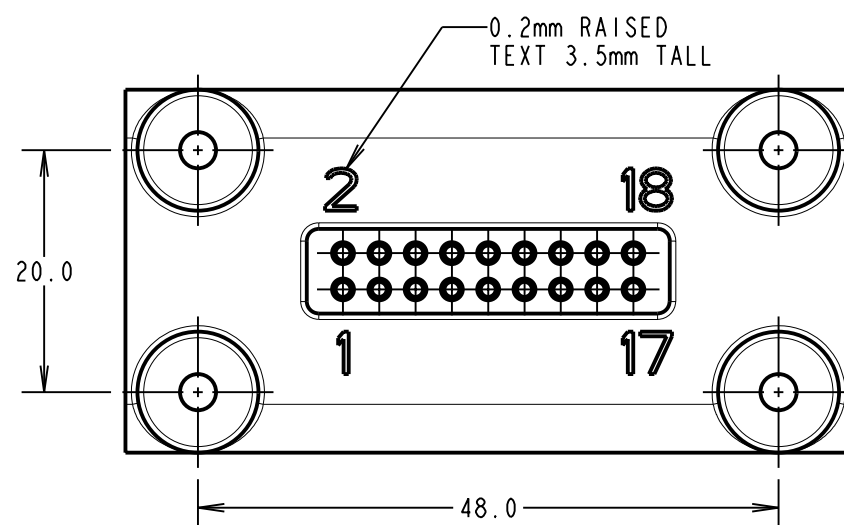
NOT TO SCALE

THIRD ANGLE PROJECTION

ALL DIMENSIONS IN mm



- NOTES:
- MATERIALS:
SPRING PROBE:
PLUNGER AND BARREL = BRASS
SPRING = STAINLESS STEEL
HOUSING = G/F POLYAMIDE 46, UL94V-0, BLACK
 - PLATING:
PLUNGER AND BARREL = 0.25µ MIN. GOLD OVER NICKEL
SPRING = UNPLATED
 - ELECTRICAL SPECIFICATION:
CURRENT RATING 12V DC = 1A
CONTACT RESISTANCE = 50 MILLIOHMS MAX AT WORKING HEIGHT (QUIESCENCE)
 - MECHANICAL SPECIFICATION:
SPRING FORCE PER CONTACT AT WORKING HEIGHT = 110g±20%
DURABILITY = 20,000 CYCLES MIN.
 - ENVIRONMENTAL SPECIFICATION: -40° TO 105° C
 - PACKING: INDIVIDUALLY BAGGED, LAYERED IN BOX.
 - FLATNESS: MOUNTING BOSS PLANE TO BE FLAT WITHIN 0.5mm.



MGP	2	20.05.10	10810
NAME	ISS.	DATE	C/NOTE
APPROVED: MGP			
CHECKED: RA			
DRAWN: MARK G PLESTED			
CUSTOMER REF.:			
ASSEMBLY DRG:			

HARWIN

HARWIN USA TEL: 603 893 5376 FAX: 603 893 5396 mis@harwin.com	HARWIN Europe (UK) TEL: 023 9231 4545 FAX: 023 9231 4590 mis@harwin.co.uk	HARWIN Asia TEL: +65 6 779 4909 FAX: +65 6 779 3868 mis@harwin.com.sg
--	--	--

THIS DRAWING AND ANY INFORMATION OR DESCRIPTIVE MATTER SET OUT HEREON ARE CONFIDENTIAL AND COPYRIGHT PROPERTY OF THE HARWIN GROUP AND MUST NOT BE DISCLOSED, LOANED, COPIED OR USED FOR MANUFACTURING, TENDERING OR FOR ANY OTHER PURPOSE WITHOUT THEIR WRITTEN PERMISSION.

TOLERANCES
X. = ±1mm
X.X = ±0.25mm
X.XX = ±0.10mm
X.XXX = ±0.01mm
ANGLES = ±5°
UNLESS STATED

MATERIAL:	SEE ABOVE
FINISH:	SEE ABOVE
S/AREA:	mm²

TITLE:	18 WAY SPRING PROBE HOTSHOE URP DOCKING CONNECTOR
DRAWING NUMBER:	M90C108950C
SHT	2 OF 2

Mouser Electronics

Authorized Distributor

Click to View Pricing, Inventory, Delivery & Lifecycle Information:

Harwin:

M90C108950C