

# Customer Information Sheet

IF IN DOUBT - ASK



NOT TO SCALE

THIRD ANGLE PROJECTION

ALL DIMENSIONS IN mm

TABLE 1: CABLE CONNECTOR DIMENSIONS

PART No.	DIM 'A'	DIM 'B'	DIM 'C'
M55-5000242-XXXXA	12.42	4.38	1.27
M55-5000342-XXXXA	13.69	5.65	2.54
M55-5000442-XXXXA	14.96	6.92	3.81
M55-5000642-XXXXA	17.50	9.49	6.35
M55-5000842-XXXXA	20.04	12.00	8.89
M55-5001042-XXXXA	22.58	14.54	11.43
M55-5001242-XXXXA	25.12	17.11	13.97

**SPECIFICATIONS:**

**MATERIAL:**

HOUSING = HIGH TEMP, PPA, UL94V-0

CONTACT = COPPER ALLOY

**PLATING:**

CONTACT = GOLD OVER NICKEL ON CONTACT AREA

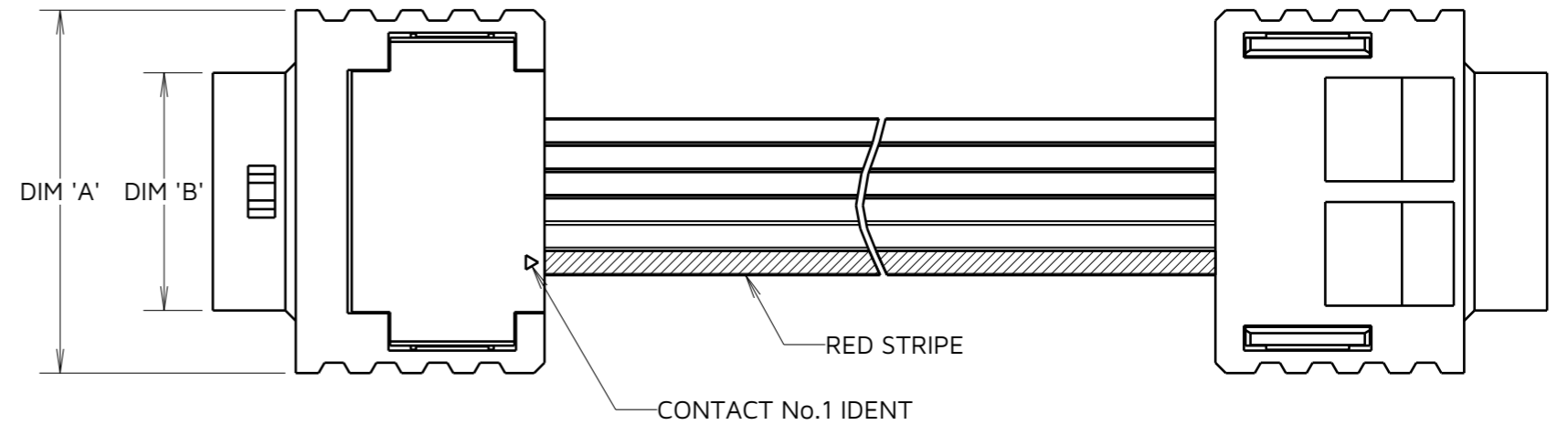
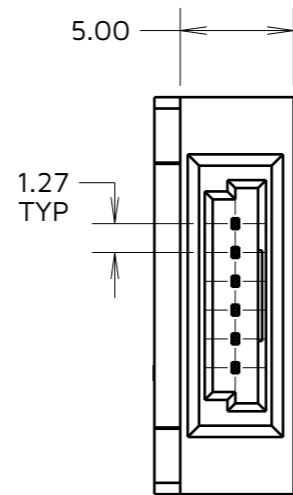
**WIRE:**

PVC, 26 AWG

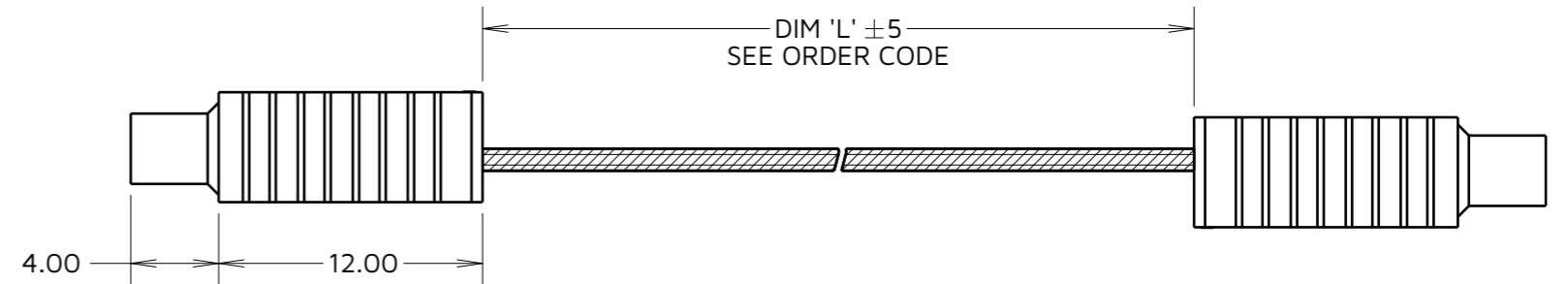
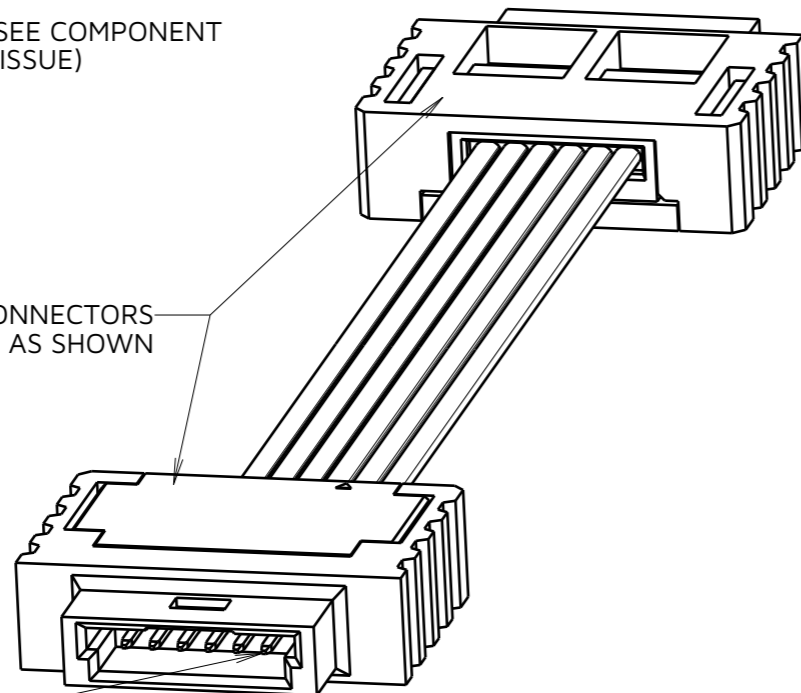
**PACKING:**

INDIVIDUALLY BAGGED

FOR COMPLETE SPECIFICATION, SEE COMPONENT SPECIFICATION C047XX (LATEST ISSUE)



ORIENTATION OF CONNECTORS ON RIBBON CABLE IS AS SHOWN



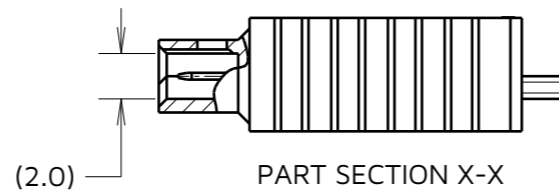
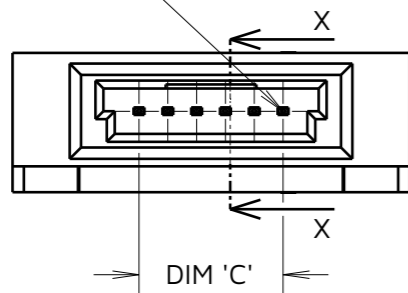
ORDER CODE:  
**M55-500XX42-XXXXA**

TOTAL No. OF CONTACTS: 02, 03, 04, 06, 08, 10, 12

DIM 'L' STOCKED LENGTH:  
 0150 = 150mm  
 0300 = 300mm

FINISH:  
 42 = GOLD FLASH ON CONTACT AREA  
 TIN TAILS

CONTACT No.1



**NOTES:**

- ALL TOLERANCES ARE  $\pm 0.20\text{mm}$  UNLESS OTHERWISE STATED.
- FOR COMPLETE SPECIFICATION, SEE COMPONENT SPECIFICATION C047XX (LATEST ISSUE).
- WIRING OF CONNECTOR:  
 CONTACT 1 TO CONTACT 1  
 CONTACT 2 TO CONTACT 2 ETC.

RA	1	21.10.24	34909
NAME	ISS.	DATE	CN/CO
APPROVED:		A.BOXALL	
CHECKED:		A.YEOMANS	
DRAWN:		R.ALEXANDER	

**HARWIN**

www.harwin.com

**TOLERANCES**  
 X. =  $\pm 1\text{mm}$   
 X.X =  $\pm 0.50\text{mm}$   
 X.XX =  $\pm 0.20\text{mm}$   
 X.XXX =  $\pm 0.01\text{mm}$   
 ANGLES =  $\pm 5^\circ$   
 UNLESS STATED

THIS DRAWING AND ANY INFORMATION OR DESCRIPTIVE MATTER SET OUT HEREON ARE CONFIDENTIAL AND COPYRIGHT PROPERTY OF THE HARWIN GROUP AND MUST NOT BE DISCLOSED, LOANED, COPIED OR USED FOR MANUFACTURING, TENDERING OR FOR ANY OTHER PURPOSE WITHOUT THEIR WRITTEN PERMISSION.

**MATERIAL & FINISH:**  
 SEE ABOVE

**TITLE:**  
 KONTROL 1.27mm PITCH SIL IDC MALE CABLE ASSEMBLY

**DRAWING NUMBER:**  
 M55-500XX42-XXXXA

# Mouser Electronics

Authorized Distributor

Click to View Pricing, Inventory, Delivery & Lifecycle Information:

[Harwin:](#)

[M55-5000242-0300A](#) [M55-5000642-0150A](#) [M55-5000242-0150A](#) [M55-5000642-0300A](#) [M55-5000342-0300A](#) [M55-5001042-0300A](#) [M55-5001242-0300A](#) [M55-5000442-0150A](#) [M55-5000842-0150A](#) [M55-5000442-0300A](#) [M55-5000342-0150A](#) [M55-5000842-0300A](#) [M55-5001042-0150A](#) [M55-5001242-0150A](#)