

NOTES: UNLESS OTHERWISE SPECIFIED

- 1. TERMINI AND ALIGNMENT SLEEVES ARE ORDERED SEPERATELY
 - MULTIMODE: TERMINI P/N MTFPI000, SLEEVE P/N MTFPII50
 - SINGLEMODE: TERMINI P/N MTFPI100, SLEEVE P/N MTFPII75
- 2. TOOLS FOR USE IN CONJUNCTION WITH THIS CONNECTOR
 - FSTF0645 TERMINI INSERTION TOOL
 - FSTF1009 SINGLE POSITION POLISHING PUCK

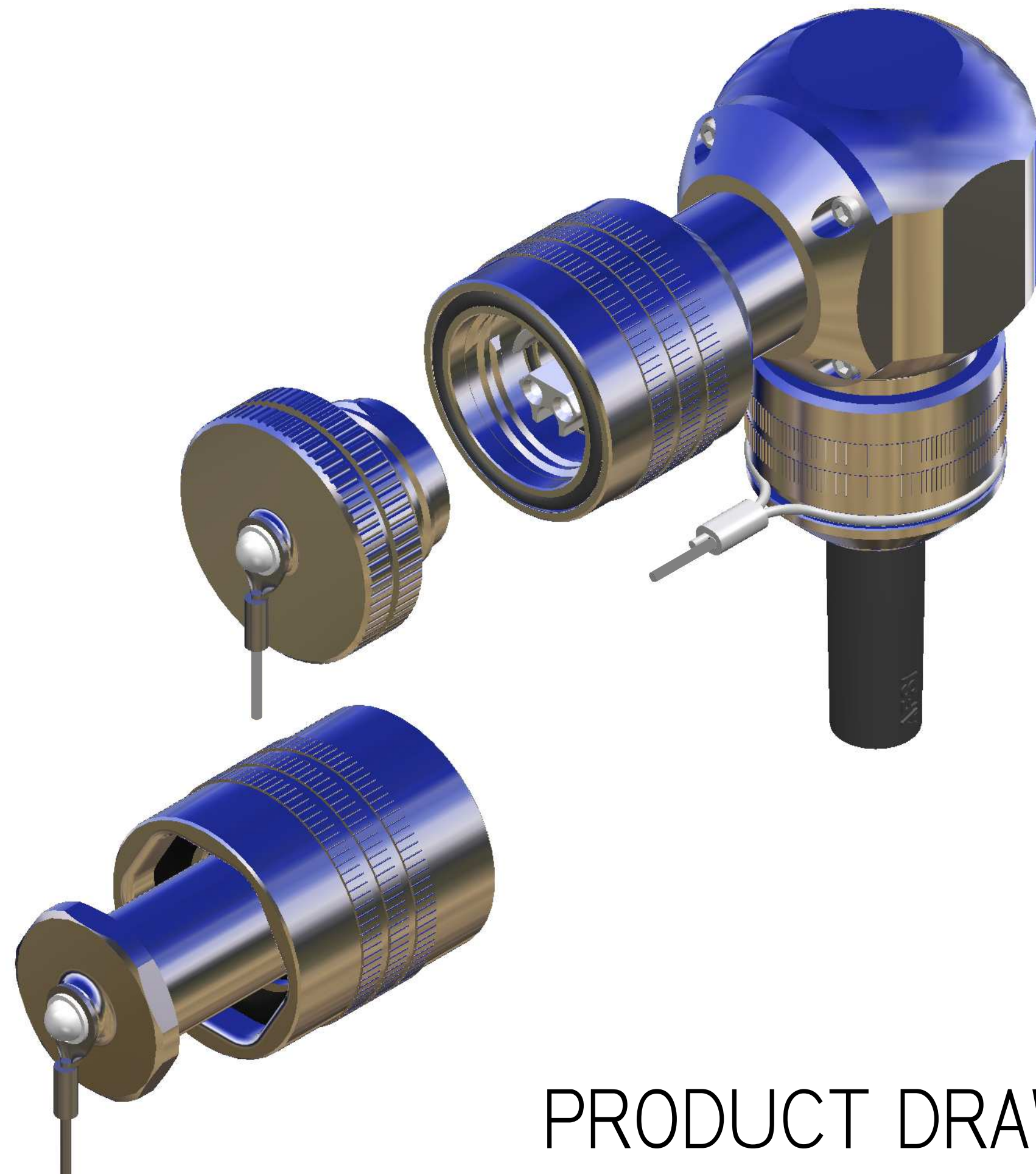
3 TORQUE BODY AND INSERT CAP SCREWS TO 4.75±.25 IN.-LBS

TABLE 1 PART NUMBER DEFINITION

PART NO.	DESCRIPTION
FS4H1090-#####	DASH NUMBER COLUMN 1 = MATERIAL & FINISH
FS4H1090- 2 #####	2 = 6061-T6 AL ALY Zn-Ni COLOR OD
FS4H1090- 3 #####	3 = 6061-T6 AL ALY GLOSS BLACK HARD ANODIZE PTFE
FS4H1090- 4 #####	4 = 6061-T6 AL ALY MATTE BLACK HARD ANODIZE PTFE
FS4H1090- 5 #####	5 = 6061-T6 AL ALY Zn-Co COLOR OD
FS4H1090- 6 #####	6 = 6061-T6 AL ALY Zn-ALLOY COLOR OD
FS4H1090- 7 #####	7 = 6061-T6 AL ALY Ni PTFE
FS4H1090- A #####	A = C63000 MARINE BRONZE
FS4H1090- B #####	B = C36000 BRASS 360 1/2 HARD
FS4H1090- C #####	C = 303 STAINLESS STEEL PASSIVATED
FS4H1090- D #####	D = 303 STAINLESS STEEL MATTE PASSIVATED
FS4H1090- E #####	E = 304 STAINLESS STEEL PASSIVATED
FS4H1090- F #####	F = 316 STAINLESS STEEL PASSIVATED
FS4H1090- G #####	G = 316 STAINLESS STEEL NICKEL PLATED
FS4H1090-#####	DASH NUMBER COLUMN 2 = SEAL MATERIAL (ORING)
FS4H1090-# A ###	A = NITRILE ORING/SEAL
FS4H1090-# B ###	B = EPDM ORING/SEAL
FS4H1090-#####	DASH NUMBER COLUMN 3 = KEY OPTION
FS4H1090-## 1 ##	1 = KEY 1, GREY
FS4H1090-## 2 ##	2 = KEY 2, BLUE
FS4H1090-## 3 ##	3 = KEY 3, RED
FS4H1090-## 4 ##	4 = KEY U, GREEN
FS4H1090-## 5 ##	5 = 2 CHANNEL
FS4H1090-#####	DASH NUMBER COLUMN 4 = CABLE SIZE (BOOT)
FS4H1090-### P #	P = CABLE RANGE .150-.190
FS4H1090-### H #	H = CABLE RANGE .190-.239
FS4H1090-### F #	F = CABLE RANGE .240-.279
FS4H1090-### N #	N = CABLE RANGE .270-.290
FS4H1090-### A #	A = CABLE RANGE .280-.315
FS4H1090-### B #	B = CABLE RANGE .316-.346
FS4H1090-### G #	G = CABLE RANGE .347-.379
FS4H1090-### C #	C = CABLE RANGE .380-.423
FS4H1090-### D #	D = CABLE RANGE .424-.465
FS4H1090-#####	DASH NUMBER COLUMN 5 = DUST CAP STYLE
FS4H1090-##### 1	1 = DUST CAP ASSY, HERMAPHRODITIC, 4/6 CH, LANYARD LENGTH 12"
FS4H1090-##### 2	2 = DUST CAP ASSY, MALE, 4/6 CH, LANYARD LENGTH 10"
FS4H1090-##### C	C = DUST CAP ASSY, MALE, 4/6 CH, PLASTIC, LANYARD LENGTH 10"

EXAMPLE: FS4HI090-6AIB2 DESCRIBES:
 90° PLUG ASSY, TFOCA-II® 4CH WITH :
 6061-T6 AL ALY Zn-ALLOY COLOR OD, NITRILE ORING/SEALS, KEY OPTION I,
 CABLE SIZE B .316-.346, DUST CAP STYLE MALE,
 SYMBOLIZED FS4HI090

REVISION HISTORY - ALL SHEETS ARE THE SAME REVISION			
REV	DESCRIPTION	DATE	APPROVED
A	FORMAL RELEASE		
B	ECN070625-1658 XLT	2007/06/25	BDC
C	ECN090910-1040 RAH, SHI, TABLE I, ADDED ROWS "-G" & KEY 5, WAS SHI OF 3	2009/09/10	BDC
D	ECN11020-1020 RAH, ADDED -I TO TABLE I COLUMN 5 DUST CAP STYLE	2011/10/20	JW
E	ECN120521-1508 RAH, TABLE I, ADDED -7 & REM "LINE I SYMB" ON COL. I	2012/05/21	JW



PRODUCT DRAWING

DFTR	XLT	2006/06/26
CHK	SML	2006/06/26
ENG	SML	2006/06/26
APPVD	BDC	2006/06/26

DO NOT SCALE THIS DRAWING
 UNLESS OTHERWISE SPECIFIED ALL
 DIMENSIONS ARE IN INCHES.
 TOLERANCES ON
 3 PL = ±.010 2PL = ±.020 ANGLES = ±1°
 INTERPRET DIM AND TOL PER ASME 14.5.1M-1994

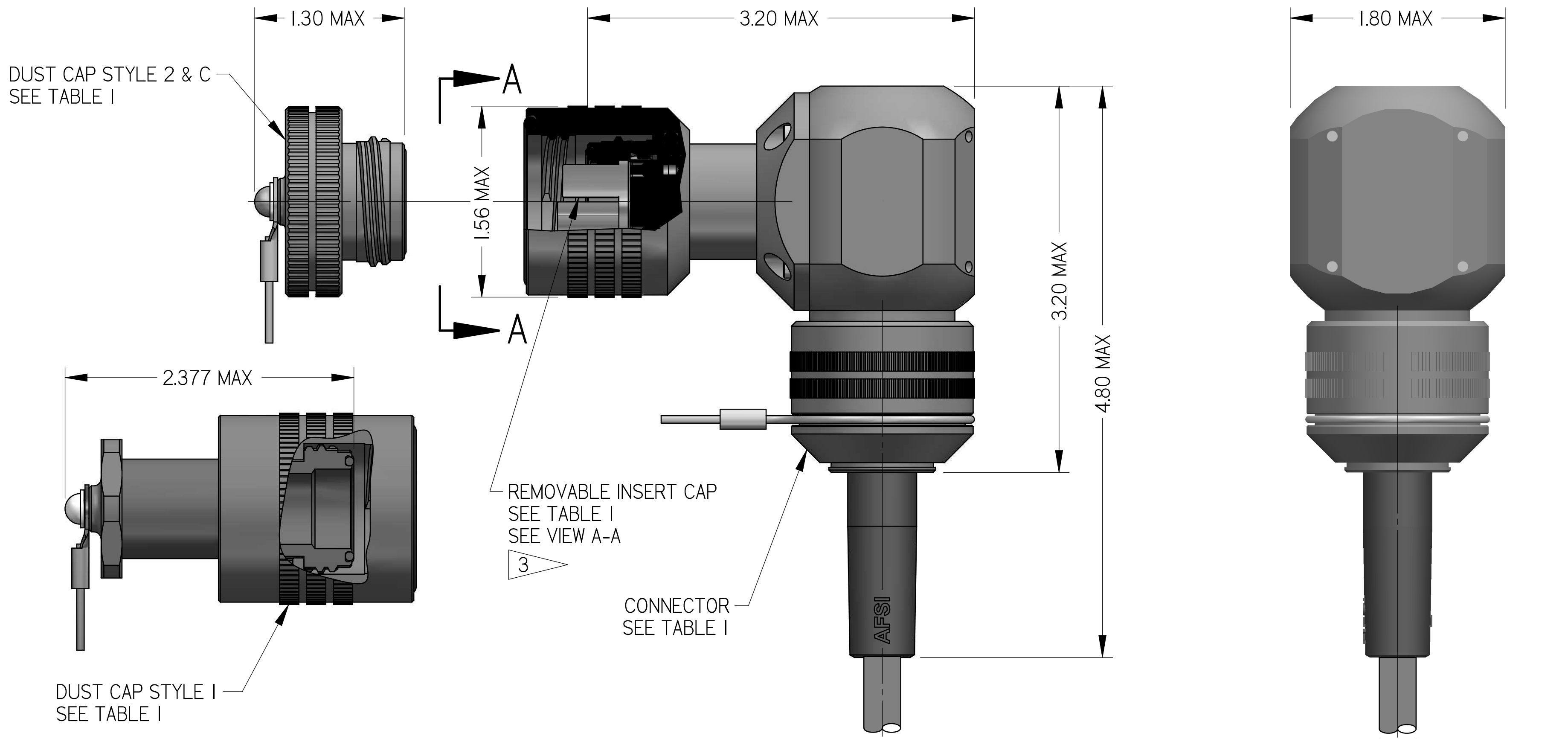
		TITLE	
		90° PLUG ASSY, TFOCA-II® 2/4 CH	
SIZE	CAGE CODE	DWG NO	REV
C	ØYPM2	FS4HI090	E
SCALE	1.5/1	SHEET	1 OF 2

4

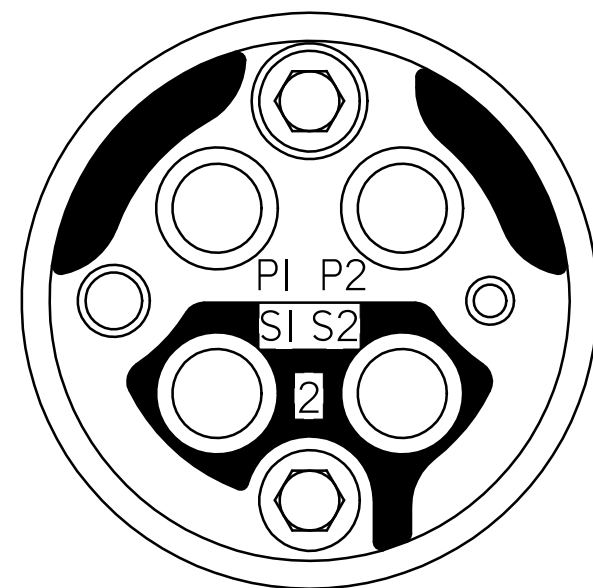
3

2

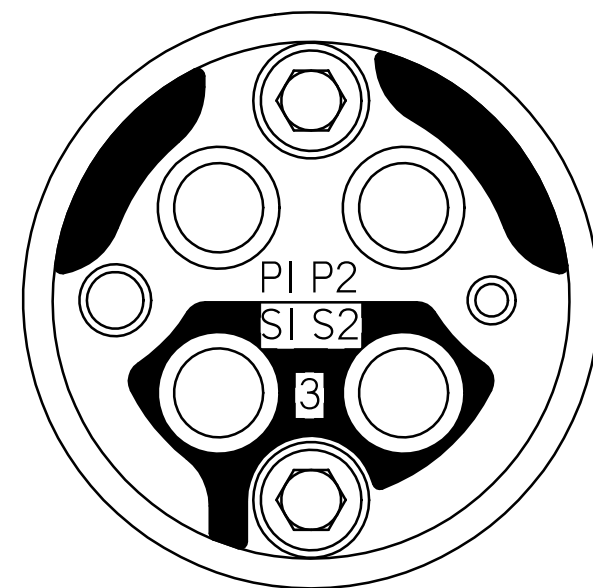
1



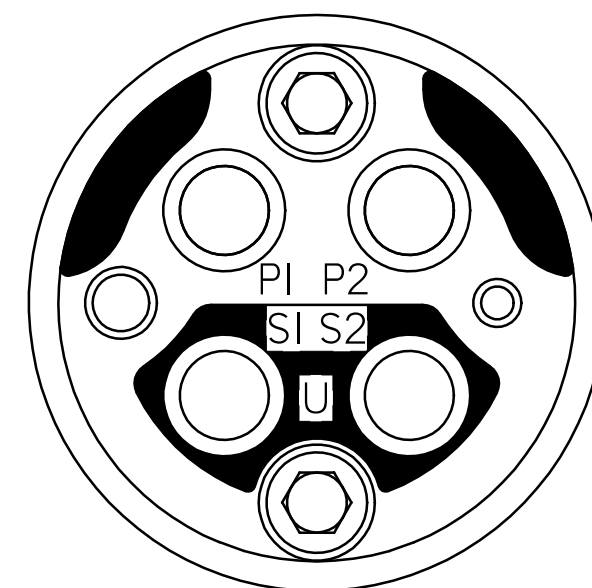
KEY OPTION 1



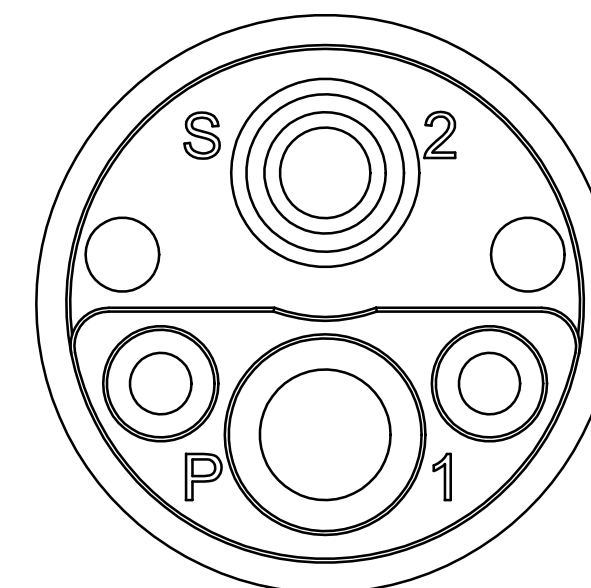
KEY OPTION 2



KEY OPTION 3



KEY OPTION UNIVERSAL



KEY OPTION 5

VIEW A-A
(SEE TABLE I)

SIZE C	CAGE CODE ØYPM2	DWG NO FS4HI090	REV E
SCALE 2/1	SHEET 2 OF 2		

4

3

2

1

Mouser Electronics

Authorized Distributor

Click to View Pricing, Inventory, Delivery & Lifecycle Information:

[Amphenol:](#)

[FS4H1090-6A1H1K](#)