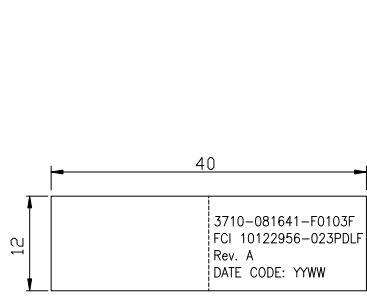
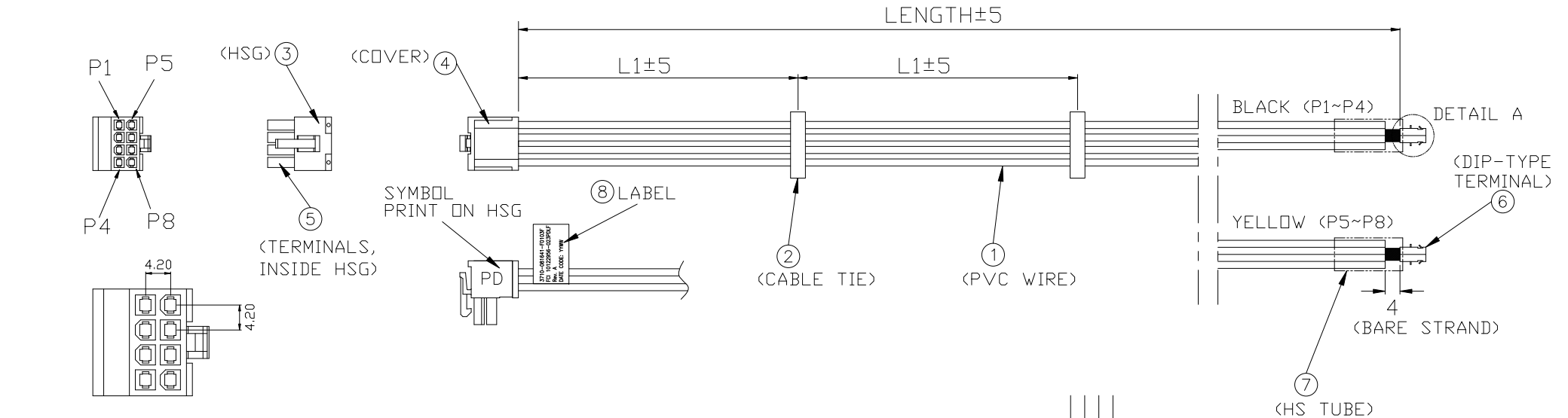
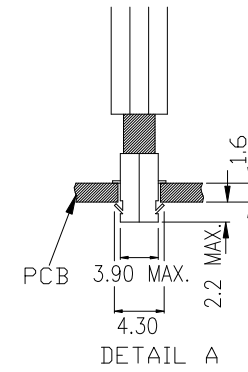


PRODUCT NUMBER	SYMBOL	LENGTH	L1	COMPUWARE P/N	COMPUWARE ECR/EN NO.
10122956-023PDLF	PD	SEE TABLE	120	3710-081641-F0103F	EN11-16040001



LABEL DETAIL

PIN NO.	SIGNAL	COLOR	WIRE SPEC.	LENGTH OF PD	COMBINATION	PCB HOLE
P1	GND	BLACK	UL1430, 16AWG	400	P1+P2 +P3+P4	ø4.0±0.05
P2	GND	BLACK	UL1430, 16AWG	400		
P3	GND	BLACK	UL1430, 16AWG	400		
P4	GND	BLACK	UL1430, 16AWG	400		
P5	+12V	YELLOW	UL1430, 16AWG	410	P5+P6 +P7+P8	ø4.0±0.05
P6	+12V	YELLOW	UL1430, 16AWG	410		
P7	+12V	YELLOW	UL1430, 16AWG	410		
P8	+12V	YELLOW	UL1430, 16AWG	410		



*HS TUBE SHOULD ENVELOP THE UPPER OF THE LATCH, BUT CAN'T ENVELOP THE LATCHES

COMPONENT LIST OF EACH CABLE

ITEM	DESCRIPTION	SUPPLIER P/N, OR EQUIVALENT	Q'TY	MATERIAL	REMARK
①	PVC WIRE, 16 AWG, UL1430, 105°C 300V				UL CSA APPROVAL
②	CABLE TIE		2	PA66, UL94V-2	
③	HSG	FCI 10122956-H08002	1	PA66, 94V-0, NATURAL	
④	COVER	FCI 10122956-BC0801	1	PA66, 94V-0, NATURAL	
⑤	RECEPTACLE CRIMP TERMINAL, HCC	FCI 10130517-121LF	8	COPPER ALLOY, TIN PLATED	
⑥	DIP-IN TTYPE TERMINAL	WELI SHENG H13903PS-2#	2	PHBR, TIN PLATED	FOR PCB HOLE ø3.9
⑦	HS TUBE, ø6mm*10mm		2	EVA, UL 94V-0	125°, BLACK, UL APPROVAL
⑧	LABEL, 12mm*40mm		1		

mat'l. code		surface	tolerance	projection	product family
ltr		tolerances unless otherwise specified		mm	MINITEK PWR4.2
ecn no	dr	date	angles		linear
A		TAI	2016-04-13	scale	RIGHT ANGLE WIRE OUTLET CABLE ASSEMBLY, 8 POS.
sheet index		revision	A	dr	dwg no
sheet		1		engr	sheet 1 of 1
				chr	size
				appd	10122956-023PDLF
					A4
					type
					CUSTOMER Drawing

Mouser Electronics

Authorized Distributor

Click to View Pricing, Inventory, Delivery & Lifecycle Information:

[FCI / Amphenol:](#)

[10122956-023PDLF](#)