



FCJconnect.com

Copyright FCI.



For CISCO

Configuration of Documents

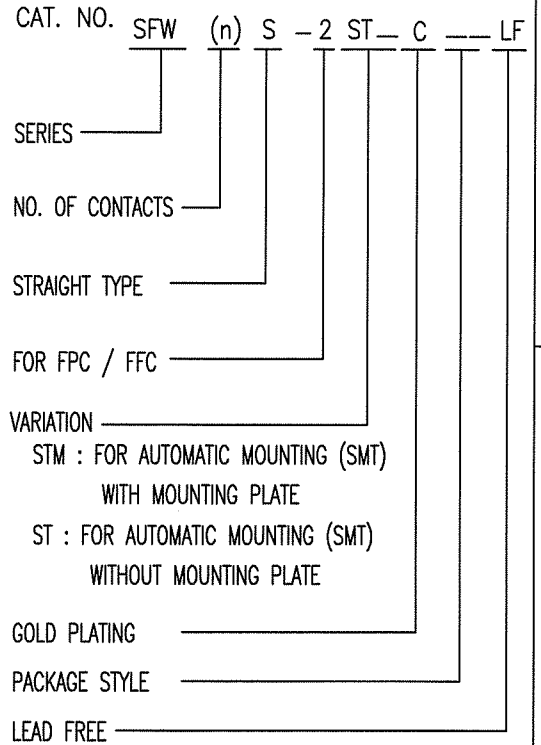
P/N	Documents	No.	Title	CAT.No.
SFW_S-2ST(M)CE1LF	Specification	SD-SFWS03	CAT.NO.TABLE FOR 1mm SPACING SMT CONNECTOR	SFW_S-2ST_C_LF
	Connector dwg.	JSA 97554	1mm SPACING SURFACE MOUNT FPC/FPC CONNECTOR	SFW_S-2STCLF
		JSA 97555	1mm SPACING SURFACE MOUNT FPC/FPC CONNECTOR	SFW_S-2STMCLF
		JSA 97556	1mm SPACING SURFACE MOUNT FPC/FPC CONNECTOR	SFW_S-2ST_CE1LF
		JSA 97557	CAT. NO. TABLE FOR PLASTIC TAPE PACKAGED 1mm SPACING SMT CONN.	SFW_S-2ST_CE1LF
		JSA 97558	PLASTIC TAPE PACKAGED 1mm SPACING SMT CONNECTOR	SFW_S-2ST_
		JSA 97559	RECOMMENDED CABLE	

mat'l. code				surface ISO 1302 <input checked="" type="checkbox"/>		tolerance ISO 406 ISO 1101		projection 		product family 58SF		CODE JP	
ltr		ecn no		dr		date		tolerances unless otherwise specified		title			
A		J09-0304		M.Y		2009-8-18		angles		mm		SFWS Documents Configuration (1mm Spacing connector)	
								linear		scale X			
				dr		H.YAMASHITA		2009-8-18		dwg no		sheet 1 of 1 size	
				enr		H.YAMASHITA		2009-8-18		JSA 97553		A4	
				chr		S. Watanabe		2009-8-18		type		Product Customer Drawing	
				appd		J. Chikawa		2009-8-18					
sheet index		revision sheet		A		1						Rev. A	

CAT. NO. & DIMENSIONS

For CISCO

NOTE3	NO. OF CONTACTS (n)	CAT. NO.	DIMENSIONS (NOTE2)		
			A ±0.2	B ±0.2	C ±0.2
	4	SFW4S-2ST_C_LF	10.4	5.24	3
	5	SFW5S-2ST_C_LF	11.4	6.24	4
	6	SFW6S-2ST_C_LF	12.4	7.24	5
*	7	SFW7S-2ST_C_LF	13.4	8.24	6
	8	SFW8S-2ST_C_LF	14.4	9.24	7
*	9	SFW9S-2ST_C_LF	15.4	10.24	8
	10	SFW10S-2ST_C_LF	16.4	11.24	9
	11	SFW11S-2ST_C_LF	17.4	12.24	10
*	12	SFW12S-2ST_C_LF	18.4	13.24	11
	13	SFW13S-2ST_C_LF	19.4	14.24	12
	14	SFW14S-2ST_C_LF	20.4	15.24	13
	15	SFW15S-2ST_C_LF	21.4	16.24	14
	16	SFW16S-2ST_C_LF	22.4	17.24	15
	17	SFW17S-2ST_C_LF	23.4	18.24	16
*	18	SFW18S-2ST_C_LF	24.4	19.24	17
*	19	SFW19S-2ST_C_LF	25.4	20.24	18
	20	SFW20S-2ST_C_LF	26.4	21.24	19
*	21	SFW21S-2ST_C_LF	27.4	22.24	20
	22	SFW22S-2ST_C_LF	28.4	23.24	21
	23	SFW23S-2ST_C_LF	29.4	24.24	22
	24	SFW24S-2ST_C_LF	30.4	25.24	23
*	25	SFW25S-2ST_C_LF	31.4	26.24	24
	26	SFW26S-2ST_C_LF	32.4	27.24	25
*	27	SFW27S-2ST_C_LF	33.4	28.24	26
	28	SFW28S-2ST_C_LF	34.4	29.24	27
	29	SFW29S-2ST_C_LF	35.4	30.24	28
	30	SFW30S-2ST_C_LF	36.4	31.24	29
*	31	SFW31S-2ST_C_LF	37.4	32.24	30
*	32	SFW32S-2ST_C_LF	38.4	33.24	31



NOTES

1. THIS PRODUCT IS THE CONNECTOR, DESIGNED TO TERMINATE FPC/FFC AND COPE WITH AUTOMATIC MOUNTING (SMT).
2. SEE PART DRAWINGS FOR DIMENSIONS A.B.C.
3. PLEASE CONSULT US IN CASE OF USING PARTS WITH * MARK

mat'l. code				surface 58 / ISO 1302 ✓		tolerance ISO 406 / ISO 1101		projection		product family 58SF		CODE JP	
ltr A		ecn no J09-0304		dr M.Y		date 2009-8-18		tolerances unless otherwise specified		title CAT. NO. TABLE FOR 1mm SPACING SMT CONNECTOR (CAT.No.SFW__S-2ST_C_LF)		dwg no sheet 1 of 1 size JSA 97554 A4	
								mm					
								angles linear		scale X			
				dr H.YAMAKI 2009-8-18		enr H.YAMASHITA 2009-8-18		chr S.W.H.L 2009-8-18		appd J. Duda 2009-8-18		FCJ	
sheet index		revision sheet A 1										type Product Customer Drawing	
												Rev. A	



FCIconnect.com

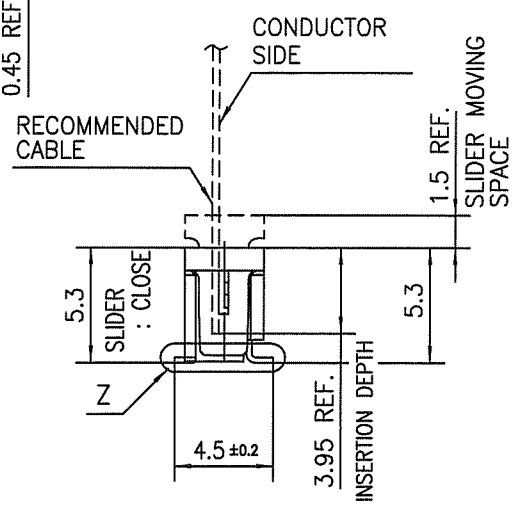
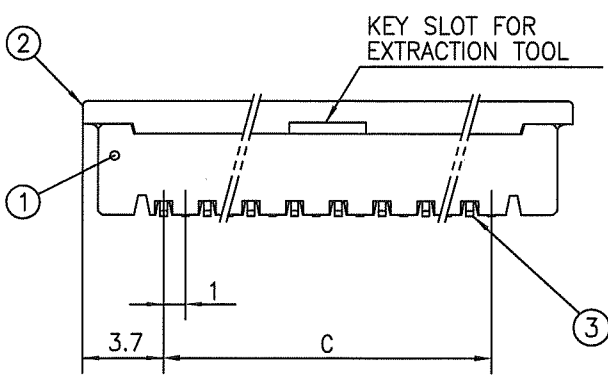
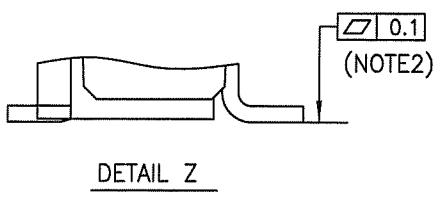
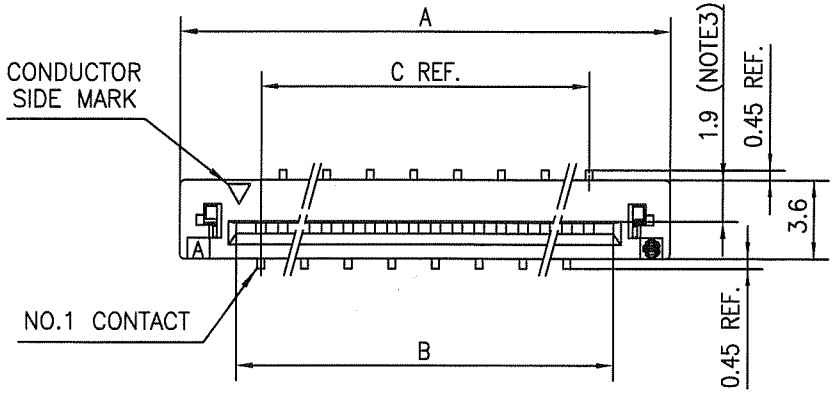
Copyright FCI.



D

D

For CISCO



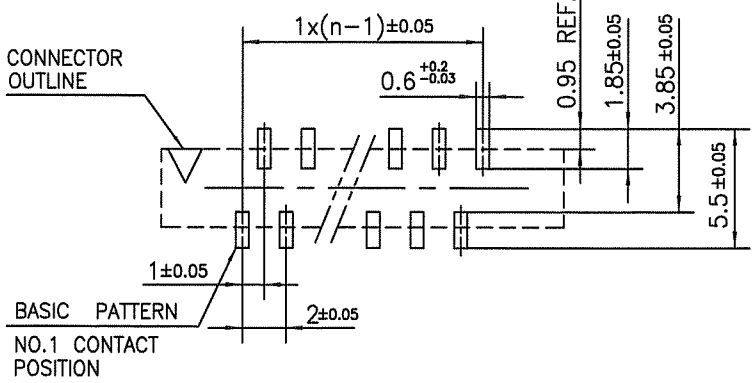
PT. NO.	PARTS NAME	MATERIAL	Q'TY	NOTE
1	HOUSING	GLASS FILLED THERMOPLASTIC RATED.	1	COLOR : BROWN
2	SLIDER	(UL94V-0)	1	COLOR : BLACK
3	CONTACT	PHOSPHOR BRONZE	n	CONTACT POINT : GOLD (0.76 μmMin.) TERMINAL POINT : TIN (1 μmMin.)

n : NO. OF CONTACTS

NOTES

1. THIS PRODUCT IS THE CONNECTOR DESIGNED TO TERMINATE FPC/FFC AND COPES WITH AUTOMATIC MOUNTING (SMT).
2. FLATNESS OF CONTACT TERMINAL MUST BE WITHIN TOLERANCE IN Z PORTION DETAILED DRAWING.
3. THIS DIMENSION IS SPACE FOR THE NOZZLE OF MOUNTER.
4. THIS PRODUCT MEETS EUROPEAN UNION DIRECTIVES AND OTHER COUNTRY REGULATIONS AS DESCRIBED IN GS-22-008
5. THE HOUSING WILL WITHSTAND EXPOSURE TO 260°C PEAK TEMPERATURE FOR 10 SECONDS IN A REFLOW SOLDERING OVEN.

RECOMMENDED PC BOARD LAYOUT (COMPONENT SIDE)



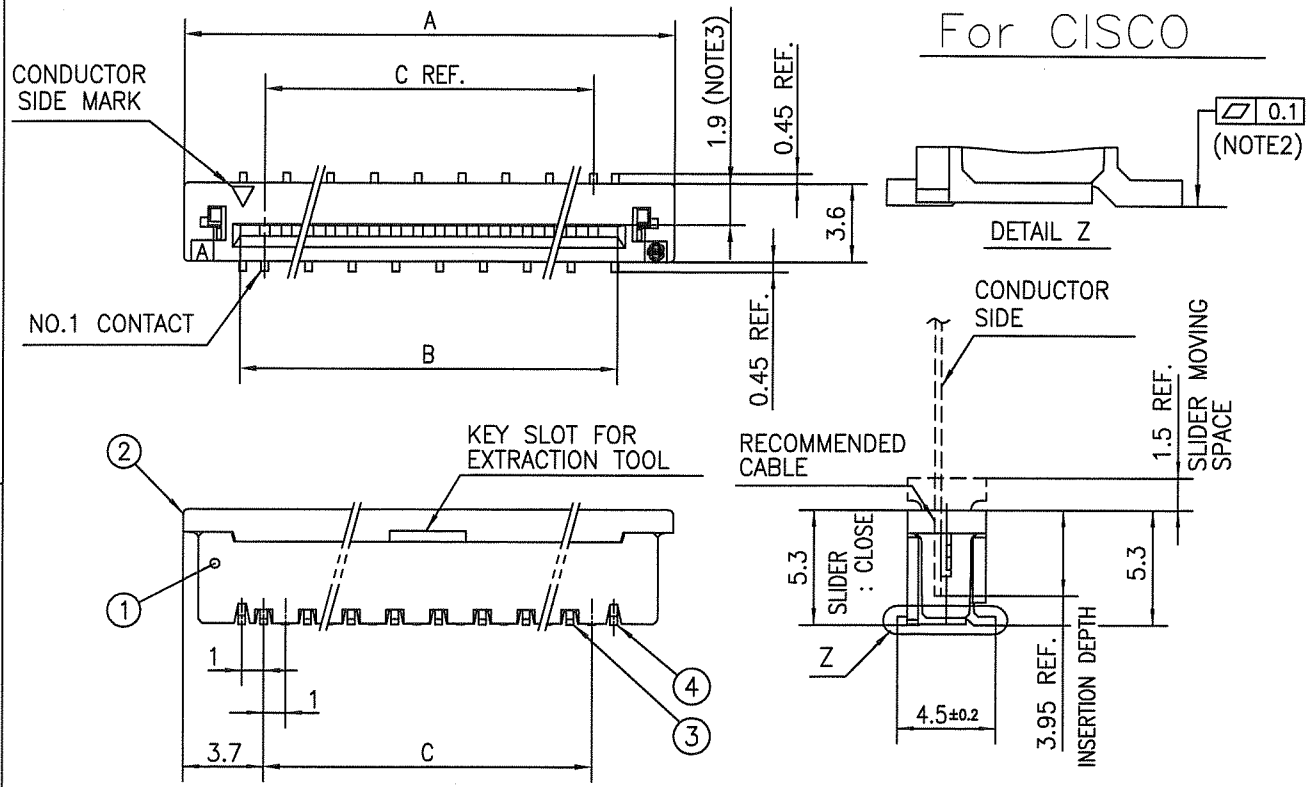
mat'l. code				surface 58 / tolerance ISO 1302 ✓ ISO 406 ISO 1101		projection		product family 58SF		CODE JP			
ltr ecn no dr date				tolerances unless otherwise specified		mm		title					
A J09-0304 M.Y 2009-8-18				±0.2		mm		1mm SPACING SURFACE MOUNT FPC/FFC CONNECTOR (CAT.No.SFW__S-2STCLF)					
				angles linear		scale X		dwg no sheet 1 of 1 size		A4			
				dr M.YAMAOKA 2009-8-18		FCJ		JSA 97555					
				enr M.YAMAOKA 2009-8-18				type Product Customer Drawing					
				chr S. Watanabe 2009-8-18									
				appd S. Okamoto 2009-8-18									
sheet index		revision sheet		A 1						Rev. A			



FCJconnect.com

Copyright FCJ.





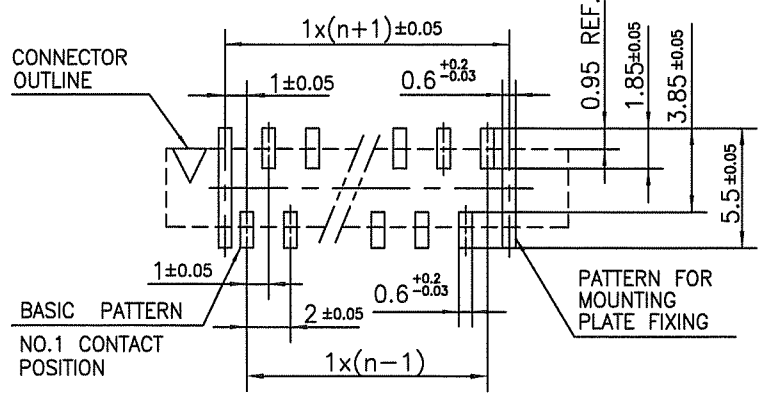
PT. NO.	PARTS NAME	MATERIAL	Q'TY	NOTE
1	HOUSING	GLASS FILLED THERMOPLASTIC RATED. (UL94V-0)	1	COLOR : BROWN
2	SLIDER		1	COLOR : BLACK
3	CONTACT	PHOSPHOR BRONZE	n	CONTACT POINT : GOLD (0.76µmMin.) TERMINAL POINT : TIN (1µmMin.)
4	MOUNTING PLATE	BRASS	2	PLATIN : TIN (1µmMin.)

n : NO. OF CONTACTS

NOTES

1. THIS PRODUCT IS THE CONNECTOR DESIGNED TO TERMINATE FPC/FFC AND COPES WITH AUTOMATIC MOUNTING (SMT).
2. FLATNESS OF CONTACT TERMINAL AND MOUNTING PLATE MUST BE WITHIN TOLERANCE IN Z PORTION DETAILED DRAWING.
3. THIS DIMENSION IS SPACE FOR THE NOZZLE OF MOUNTER.
4. THIS PRODUCT MEETS EUROPEAN UNION DIRECTIVES AND OTHER COUNTRY REGULATIONS AS DESCRIBED IN GS-22-008
5. THE HOUSING WILL WITHSTAND EXPOSURE TO 260°C PEAK TEMPERATURE FOR 10 SECONDS IN A REFLOW SOLDERING OVEN.

RECOMMENDED PC BOARD LAYOUT (COMPONENT SIDE)



mat'l. code				surface 58 / tolerance ISO 1302 ✓ ISO 406 ISO 1101		projection		product family 58SF		CODE JP		
ltr	ecn no	dr	date	tolerances unless otherwise specified		mm		title 1mm SPACING SURFACE MOUNT FPC/FFC CONNECTOR (CAT.No.SFW__S-2STMCLF)				
A	J09-0304	M.Y	2009-8-18	±0.2								
				angles	linear	scale X		dwg no		sheet 1 of 1 size		
				dr	HYAMASHITA 2009-8-18				JSA 97556		A4	
				enr	HYAMASHITA 2009-8-18							
				chr	S. W. T. 2009-8-18							
				appd	S. Madava 2009-8-18							
sheet index	revision	A								Rev. A		
	sheet	1								A		



FCJconnect.com

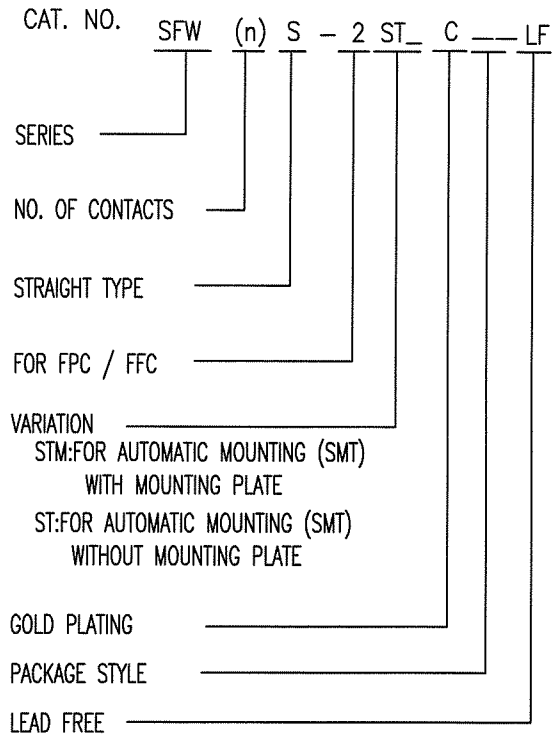
Copyright FCJ.



For CISCO

CAT. NO. & DIMENSIONS

(NOTE4)	NO. OF CONTACTS (n)	CAT. NO. (NOTE2)	DIMENSIONS (NOTE3)		
			D ± 5	E ± 0.3	F ± 0.1
	4	SFW4S-2ST_CE1LF	28.4	24	—
	5	SFW5S-2ST_CE1LF	28.4	24	—
	6	SFW6S-2ST_CE1LF	28.4	24	—
*	7	SFW7S-2ST_CE1LF	28.4	24	—
	8	SFW8S-2ST_CE1LF	28.4	24	—
*	9	SFW9S-2ST_CE1LF	28.4	24	—
	10	SFW10S-2ST_CE1LF	28.4	24	—
	11	SFW11S-2ST_CE1LF	28.4	24	—
*	12	SFW12S-2ST_CE1LF	36.4	32	28.4
	13	SFW13S-2ST_CE1LF	36.4	32	28.4
	14	SFW14S-2ST_CE1LF	36.4	32	28.4
	15	SFW15S-2ST_CE1LF	36.4	32	28.4
	16	SFW16S-2ST_CE1LF	48.4	44	40.4
	17	SFW17S-2ST_CE1LF	48.4	44	40.4
*	18	SFW18S-2ST_CE1LF	48.4	44	40.4
*	19	SFW19S-2ST_CE1LF	48.4	44	40.4
	20	SFW20S-2ST_CE1LF	48.4	44	40.4
*	21	SFW21S-2ST_CE1LF	48.4	44	40.4
	22	SFW22S-2ST_CE1LF	48.4	44	40.4
	23	SFW23S-2ST_CE1LF	48.4	44	40.4
	24	SFW24S-2ST_CE1LF	48.4	44	40.4
*	25	SFW25S-2ST_CE1LF	48.4	44	40.4
	26	SFW26S-2ST_CE1LF	48.4	44	40.4
*	27	SFW27S-2ST_CE1LF	60.4	56	52.4
	28	SFW28S-2ST_CE1LF	60.4	56	52.4
	29	SFW29S-2ST_CE1LF	60.4	56	52.4
	30	SFW30S-2ST_CE1LF	60.4	56	52.4
*	31	SFW31S-2ST_CE1LF	60.4	56	52.4
*	32	SFW32S-2ST_CE1LF	60.4	56	52.4



NOTES

1. THIS PRODUCT IS THE CONNECTOR DESIGNED TO TERMINATE FPC/FFC AND COPES WITH AUTOMATIC MOUNTING (SMT).
2. THIS CATALOG NO. INDICATES PLASTIC TAPE PACKAGED CONNECTOR.
3. SEE PART DRAWINGS FOR DIMENSIONS D~F.
4. PLEASE CONSULT US IN CASE OF USING PARTS WITH * MARK.

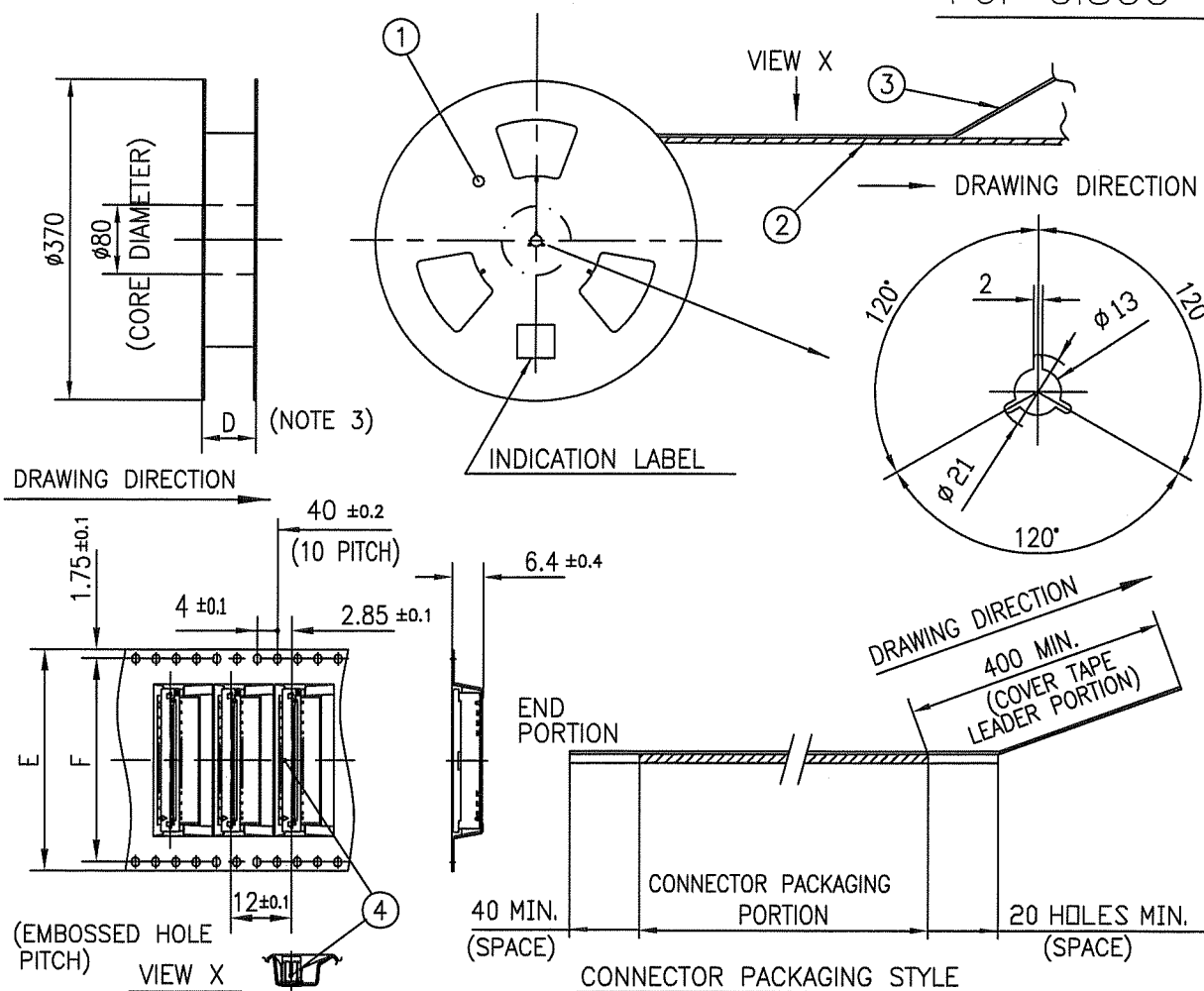


FCIconnect.com

Copyright FCI.

mat'l. code				surface 58 / ISO 1302		tolerance ISO 406 / ISO 1101		projection		product family 58SF		CODE JP	
ltr A		ecn no J06-0304		dr M.Y		date 2009-8-18		tolerances unless otherwise specified		title		CAT NO. TABLE FOR PLASTIC TAPE PACKAGED 1mm SPACING SMT CONN. (CAT.No.SFW__S-2ST_CE1LF)	
				angles		linear		mm		scale X		dwg no JSA 97557	
				dr MYAMASHITA		2009-8-18		FCI		sheet 1 of 1		size A4	
				enr MYAMASHITA		2009-8-18				type Product Customer Drawing			
				chr S. Watanabe		2009-8-18							
				appd J. Andou		2009-8-18							
sheet index		revision A		sheet 1								Rev. A	

For CISCO



PT. NO.	PARTS NAME	CAT. NO.	MATERIAL	Q'TY	NOTE
1	REEL	_____	CARDBOARD	1	COLOR:GRAY
2	PLASTIC (EMBOSSED) TAPE	_____	PET	_____	COLOR:TRANSPARENCY
3	COVER	_____	POLYESTER	_____	COLOR:TRANSPARENCY
4	CONNECTOR	SFW__S-2ST_C_LF	SEE ATTACHED DWG.	1000	_____

- NOTES
- THIS IS PLASTIC TAPE PACKAGED CONNECTOR USED FOR FPC/FFC AND COPER WITH AUTOMATIC MOUNTING (SMT).
 - SEE JIS C 0806 (PACKING OF ELECTRONIC COMPONENTS ON CONTINUOUS TAPES (SURFACE MOUNTING DEVICES)) FOR SHAPE AND DIMENSIONS OF PLASTIC (EMBOSSED) TAPE AND REEL.
 - F DIMENSION IS PORTION OF THE CORE.

mat'l. code				surface 58 / ISO 1302	tolerance ISO 406 / ISO 1101	projection	product family 58SF	CODE JP
ltr	ecn no	dr	date	tolerances unless otherwise specified		mm	title PLASTIC TAPE PACKAGED 1mm SPACING SMT CONNECTOR (CATA.No.SFW__S-2ST_CE1LF)	
A	J09-0304	M.Y	2009-8-18	angles	linear			
				±5'		scale X	dwg no sheet 1 of 1 size	
				dr	M.YAMASHITA	2009-8-18	JSA 97558 A4	
				enr	M.YAMASHITA	2009-8-18		
				chr	S. Miki	2009-8-18		
				appd	S. Ando	2009-8-18		
sheet index	revision	A					type Product Customer Drawing	
	sheet	1					Rev. A	



FCIconnect.com

Copyright FCI.



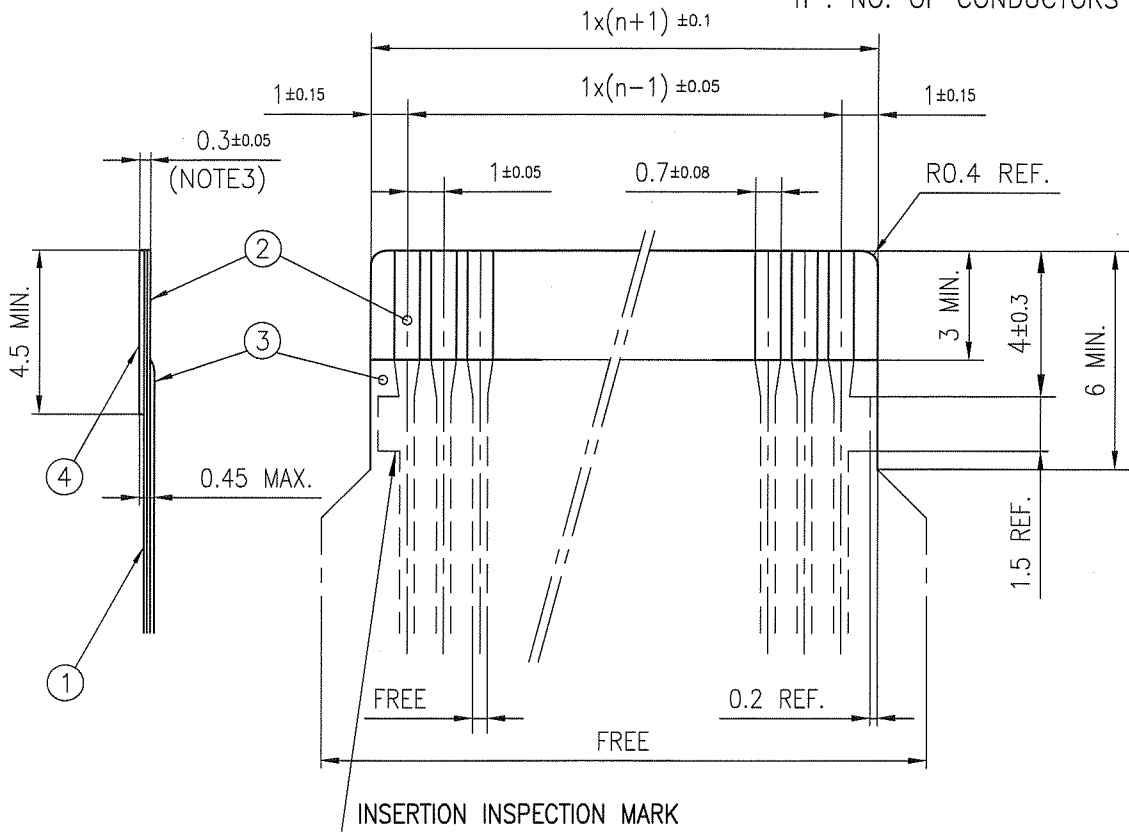
D

D

For CISCO

RECOMMENDED CABLE (FPC)

n : NO. OF CONDUCTORS



PT. NO.	DESCRIPTION	MATERIAL	THICKNESS (μm)
1	BASE FILM	POLYIMIDE OR POLYESTER OR EQUIVALENT	25
2	CONDUCTOR	COPPER FOIL (GOLD PLATING)	35
3	OVERLAY	POLYIMIDE OR POLYESTER OR EQUIVALENT	—
4	SUPPORTING TAPE	POLYESTER OR POLYIMIDE OR EQUIVALENT	188

NOTES

1. NO BURR AT EACH PORTION.
2. NO PEELING IN COMMON USE.
3. TOTAL THICKNESS LIMIT OF EACH MATERIAL (INCLUDING ADHESIVE AGENT) IS SPECIFIED.

mat'l. code				surface 58 / tolerance ISO 1302 ✓ ISO 406 ISO 1101		projection		product family 58SF		CODE JP		
ltr	ecn no	dr	date	tolerances unless otherwise specified		mm		title				
A	J09-0304	M.Y	2009-8-18	angles	linear	mm		RECOMMENDED CABLE (CAT.No.SFW__S-2ST__)				
				dr	M.YAMASHITA	2009-8-18	scale X		dwg no		sheet 1 of 1	size
				enr	M.YAMASHITA	2009-8-18	FCJ		JSA 97559		A4	
				chr	S. Watanabe	2009-8-18			type		Product Customer Drawing	
sheet index		revision	A									Rev. A
		sheet	1									A



FCconnect.com

Copyright FCJ.



Mouser Electronics

Authorized Distributor

Click to View Pricing, Inventory, Delivery & Lifecycle Information:

[FCI / Amphenol:](#)

[SFW13S-2STCE1LF](#)