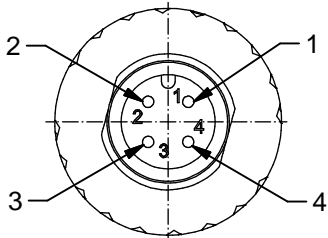
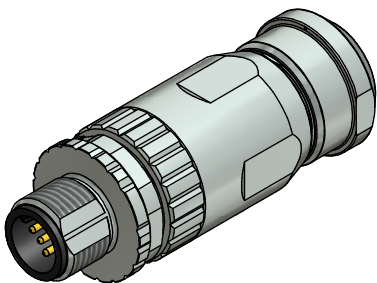
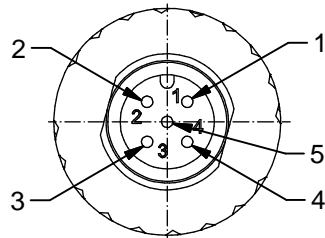


4pos



5pos



**Technical specification:**

Rated voltage: IEC 61076-2-101	4pos 5pos 250 V 60 V
Current rating: IEC 61076-2-101	7,5 A at 40°C, with 1,5mm <sup>2</sup>
Insulation resistance: IEC 60512	>=100 MΩ
Pollution degree: IEC 60664-1	3/2
Degree of protection: IEC 60529	IP 67, in mated condition
Temperature range: IEC 60664-1	-30°C ... +85°C
Mating cycles: IEC 60512-9a	>=100
Wire cross section:	max. AWG16 / max. 1,50mm <sup>2</sup> (incl. sleeve)

**Materials:**

Contact:	CuZn
Contact plating:	Nickel, gold plated
Contact carrier:	PA6, UL 94
Cable seal:	Elastomere
O-Ring:	FKM / NBR
Coupling screw:	GD-Zn, nickel plated
Housing:	GD-Zn, Ni

**Installation specification:**

Recommended torque:	0,6 Nm
Conec installation tooling:	Torque wrench: 36-000200 Insert across flats 18: 36-000240
Recommended torque, screw termination contact:	0,3 Nm

Part no:	Description:	Pos:	Cable-φ:
43-00115	SAL - 12S - RSC4 - S / 150	4	4 - 8 mm
43-00116	SAL - 12S - RSC5 - S / 150	5	4 - 8 mm

title: Male connector M12x1, field attachable, shielded, axial, screw connection	
dwg no: 43K1A891	
part no:	see table

DO NOT ALTER CAD DRAWING BY HAND	Index: b 29.09.15 BS Ä5791 data sheet a. description modified		dim. in mm	
	tolerance of cable:		date	name
	general tolerance:		drawn	20.09.10
		appd.	20.09.10	Schmidt
THIS DRAWING MAY NOT BE COPIED OR REPRODUCED IN ANY WAY, AND MAY NOT BE PASSED ON TO A THIRD PARTY WITHOUT WRITTEN PERMISSION. OWNERSHIP AND COPYRIGHT OF CONEC GmbH		<b>CONEC</b> <sup>®</sup>		

RoHS & REACH konform

# Mouser Electronics

Authorized Distributor

Click to View Pricing, Inventory, Delivery & Lifecycle Information:

[Amphenol:](#)

[43-00115](#) [43-00116](#)