

Technical specification/

Technische Daten:

Working voltage/ Betriebsspannung:	125 V AC
Insulation resistance/ Isolationswiderstand:	≥ 5 GΩ
Dielectric withstanding voltage/ Spannungsfestigkeit:	1000 V, 50 Hz, 1 min.
Temperature range/ Temperaturbereich:	- 55 °C ... + 125 °C
Current rating/ Strombelastbarkeit:	7,5 A (UL) / 5 A (CSA, VDE)
Mating cycles/ Steckzyklen:	Quality class 1 = 500 Gütestufe 1 Quality class 2 = 200 Gütestufe 2 Quality class 3 = 50 Gütestufe 3

**Materials/
Werkstoffe:**

Contact/ Kontakt:	Cu alloy, Au over Ni
Insulator/ Isolierkörper:	PBT GF UL 94 V-0
Shell/ Gehäuse:	Steel, Sn over Ni
Metal bracket/ Metallwinkel:	GD-Zn, Cu / Ni / Sn
Threaded insert/ Gewindeeinsatz:	Cu alloy, Sn over Ni
Fixing plate/ Zentrierplatte:	PBT GF UL 94 V-0

**Installation specification/
Montagedaten:**

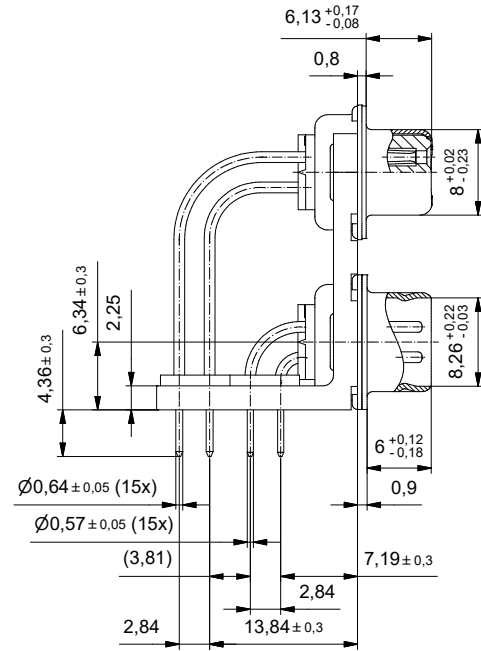
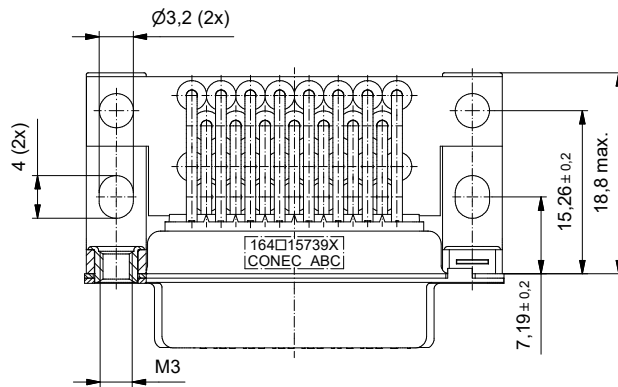
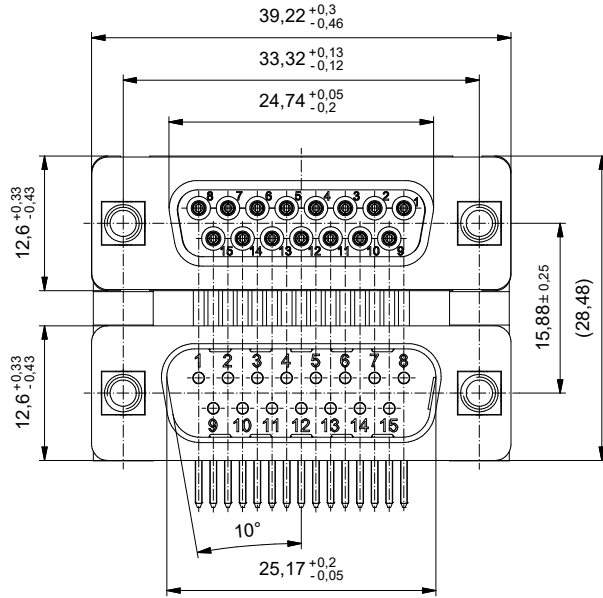
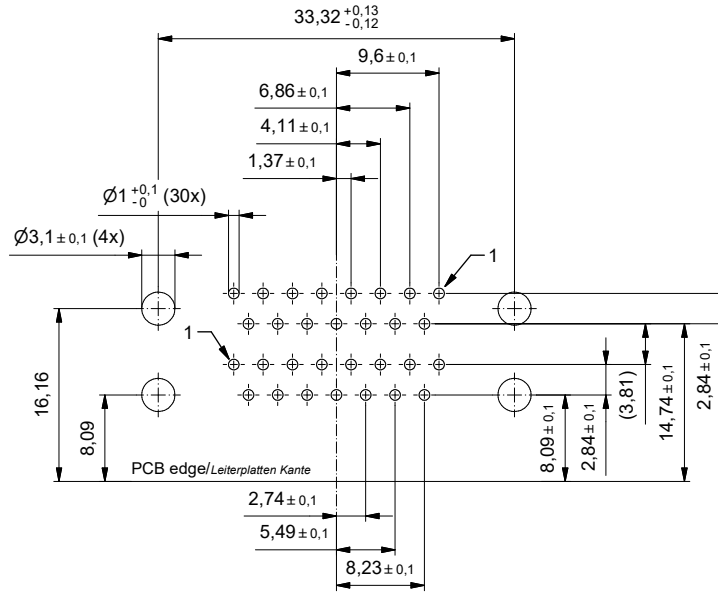
Recommended torque value for thread/ Empfohlenes Drehmoment für Gewinde:	max. 6 in.LB/max. 67 Ncm
PCB hole drillings/ Leiterplattenbohrbild:	see sheet 2/siehe Seite 2

Part no. / Part marked/ Art.-Nr. / Bedruckung:	Quality class/ Gütestufe:	Contact plating/ Kontakt Veredelung:
164A15739X	3	Gold flash over nickel Gold über Nickel
164B15739X	2	20 µin hard gold over min. 50 µin nickel 20 µin Gold über min. 50 µin Nickel
164C15739X	1	30 µin hard gold over min. 50 µin nickel 30 µin Gold über min. 50 µin Nickel

		D-SUB DUAL PORT 15.88mm 15pos. Female / 15pos. Male threaded insert, metal bracket and fixing plate D-SUB DUAL PORT 15.88mm 15pol. Buchse / 15pol. Stift Gewindeeinsatz, Metallwinkel und Zentrierplatte	
Index: a Original	Scale/ Maßstab: 2:1		dwg no / Z.-nr.: 16K1A4142
Status: InBearbeitung			DIN-A3
RoHS compliant/konform			1 / 2

This reproduction, classification and utilization of this document as well as the communication of its contents to others without express authorization is prohibited. Offenders will be held liable for the payment of damages. Wir bitten um Ihre Zustimmung zur Weitergabe dieses Dokuments. In sonstigen Fällen ist die Weitergabe ohne schriftliche Genehmigung ausdrücklich untersagt.

PCB hole drillings
(PCB top side) /
Leiterplattenbohrbild
(Leiterplatten Oberseite)



		dim. in mm		D-SUB DUAL PORT 15.88mm 15pos. Female / 15pos. Male threaded insert, metal bracket and fixing plate	
		Date/Datum	Name	D-SUB DUAL PORT 15.88mm 15pol. Buchse / 15pol. Stift Gewindeeinsatz, Metallwinkel und Zentrierplatte	
drawn/gez.		15.05.2019	Lehmenkühler		
appd./gepr.		15.05.2019	Schmidt		
Index:	a Original	scale/Maßstab:	2:1	dwg no / Z.-nr.:	16K1A4142
Status:	InBearbeitung	CONEC®			DIN-A3
RoHS compliant/konform					2 / 2

This reproduction, classification and utilization of this document as well as the communication of its contents to others without express authorization is prohibited. Offenders will be held liable for the payment of damages. We reserve every right. In particular, we reserve the right to take legal action against you in the event of a violation.

Mouser Electronics

Authorized Distributor

Click to View Pricing, Inventory, Delivery & Lifecycle Information:

[Amphenol:](#)

[164A15739X](#)