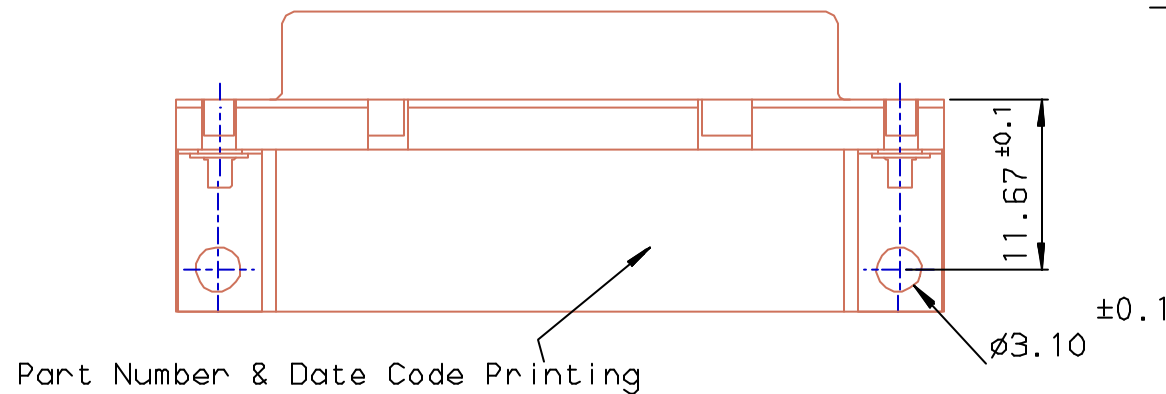


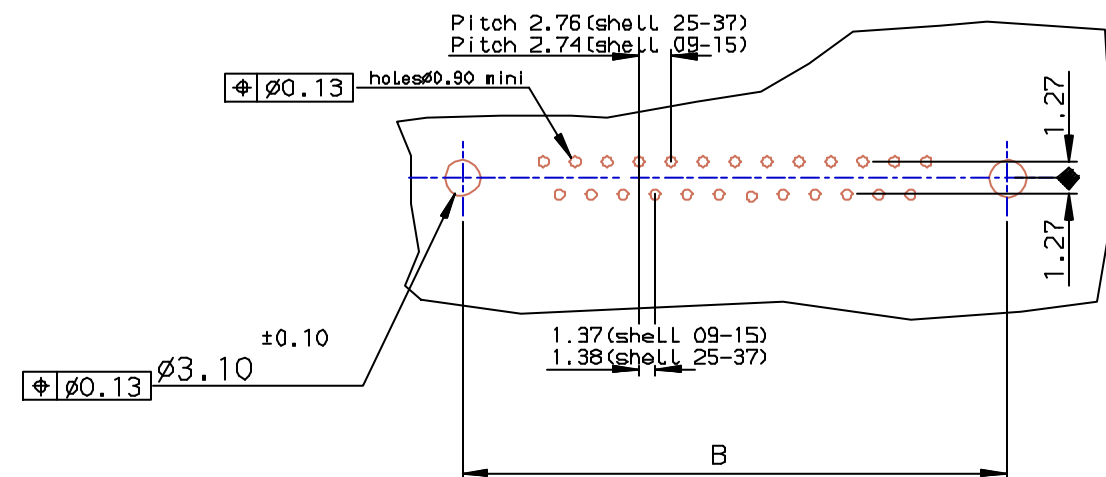
PC card drilling dimensions (after plating)
(thickness 1.60±0.20mm)



LF FOR LEAD FREE

SHELL	A±0.38	B±0.12	C±0.10	D±0.25	PART NUMBER
09	30.81	24.99	16.96	16.21	D09S13A*UX00**
15	39.14	33.32	25.18	24.54	D15S13A*UX00**
25	53.03	47.04	39.12	38.25	D25S13A*UX00**
37	69.32	63.50	55.68	54.71	D37S13A*UX00**

Plating: 4 --> flash AU
Plating: 6 --> 0.76µ AU



FOR ROHS DETAILS REFER DWG. NO: C01-8646-0000

REQUIREMENTS

Technical characteristics:

Shell: steel tin/Zinc Cr3 plated
Insulators: self-extinguishing thermoplastic, UL Class 94V0
Contacts size 20: phosphor bronze, gold on mating end, bright tin on termination end over nickel on entire contact
Cycles :500 for plating 6
Cycles :200 for plating 4

Nuts: brass, tin/Zinc Cr3 plated

Metal plate for electrical continuity: brass, tin/Zinc Cr3 plated

Electrical characteristics:

max. current rating: 5A
Test voltage: 1000V
Rated voltage: 300V
Contact resistance: <15mΩ
Shell resistance: <5mΩ
Insulation resistance: >5000MΩ

Climatic characteristics:

Operating temperature range: -55°C +125°C

Dimensions:

in accordance with MIL-C-24308

European Views

www.fciconnect.com		surface ISO 1302 ✓	tolerance std ISO 406 ISO 1101	projection mm
TOLERANCES UNLESS OTHERWISE SPECIFIED				
Dr	JOHN SLEEBA	1994/08/01	ANGULAR	0.X ±0.1
Eng	GEORGE VJ	1994/08/01	LINEAR	0.XX ±0.1
Chr	GEORGE VJ	2005/07/27	0.XX* ±1*	0.XXX ±0.1
Appr	KVSD	2005/07/27	Product family	D-SUB
title SOCKET CONNECT.DELTA D RIGHT ANGLED WITH NUT,METAL BRACKET.				Rev. E
catalog no DELTA-D				sheet 1 of 1

rev	ecn no	dr	date
D	105-0124	JS	2005/07/27
E	106-0074	SK	2006/06/08
-	-	-	-
-	-	-	-
-	-	-	-
-	-	-	-



Copyright FCI.

Mouser Electronics

Authorized Distributor

Click to View Pricing, Inventory, Delivery & Lifecycle Information:

[Amphenol:](#)

[D09S13A4UX00LF](#)