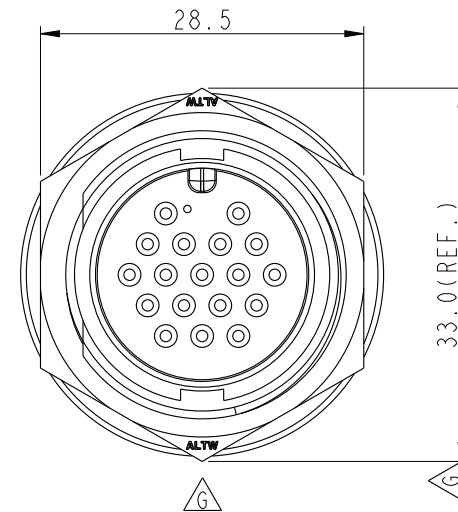
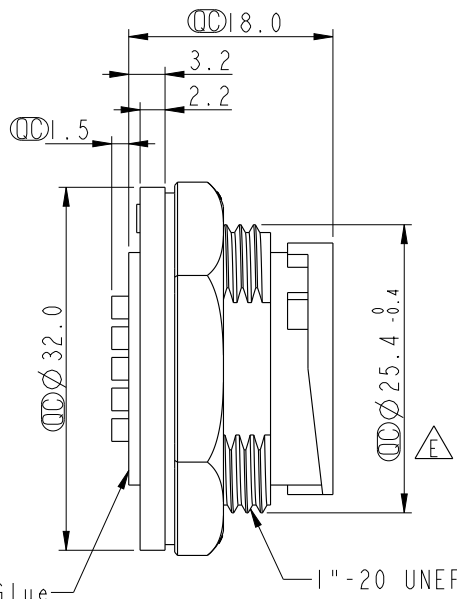
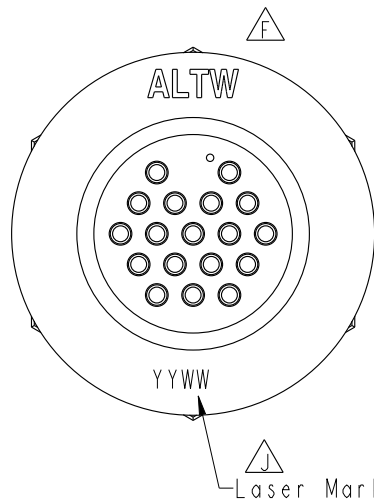
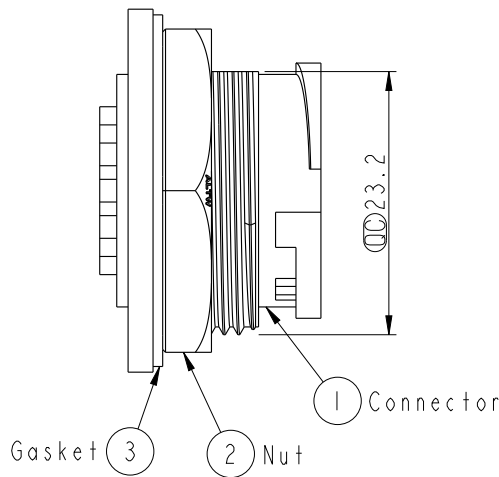


THIS DOCUMENT IS SUBJECT TO CHANGE WITHOUT NOTICE. IT IS CONFIDENTIAL AND A PROPERTY OF AMPHENOL LTW. DISCLOSURE TO THIRD PARTY HAS TO BE AUTHORIZED BY AMPHENOL LTW.

REV.	ECN NO.	DATE	SIGN	DESCRIPTION
G	LEN1660022	2016/05/25	Vicky	Update Nut View & Dime
H	C190314	2019/03/12	Ruru	Modify Note
J	C191957	2019/11/08	JC Chen	△X2



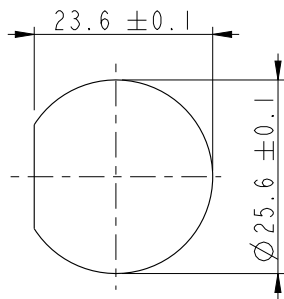
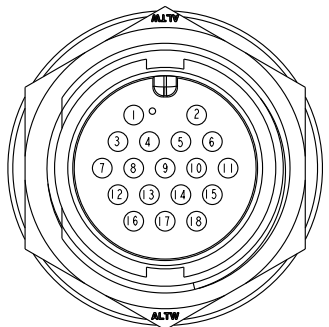
With Liquid Glue



Note: △H

- * ∅ Important Dimension To Check
- * Waterproof Rate: IP67, Unmated
- * Housing: Thermoplastic, Black
- * Pin: Copper Alloy, Gold Plated
- * Nut: Thermoplastic, Black
- * Gasket: Rubber, Black

- △E * Use Waterproof Cap or Dust Cap
Panel Thickness Max: 3.0mm
- △E * Use without Waterproof Cap or Dust Cap
Panel Thickness Max: 4.0mm
- △J * Laser Mark: YYWW(年+周, 4碼) 字型Simplex; 字高2mm.
- * Gasket and Nut are packed separately in PE bags.



Recommended Panel Cut-Out

UNIT: mm		
TOLERANCE	.X ±0.25	
	.XX ±0.1	
	.XXX ±0.05	
ANGLES	±1°	

TITLE Large Panel Lock 18Pin M Conn M Pin			
SCALE 3:2	SIZE A4	SHEET 1 OF 1	
REV. J	WC-REV. A.2	∅: Inspection item	

Amphenol LTW
安費諾亮泰企業股份有限公司

ITEM NO. DD-18PMMS-LC7001	DRAWN BY Ruru	DATE 2019-03-12
DWG NO. DD-18PMMS-LC7001	CHECKED BY Rita	DATE 2019-03-12
CUSTOMER ALTW	APPROVED BY Max	DATE 2019-03-12

Mouser Electronics

Authorized Distributor

Click to View Pricing, Inventory, Delivery & Lifecycle Information:

[Amphenol:](#)

[1DD-18PMMS-LC7001](#)