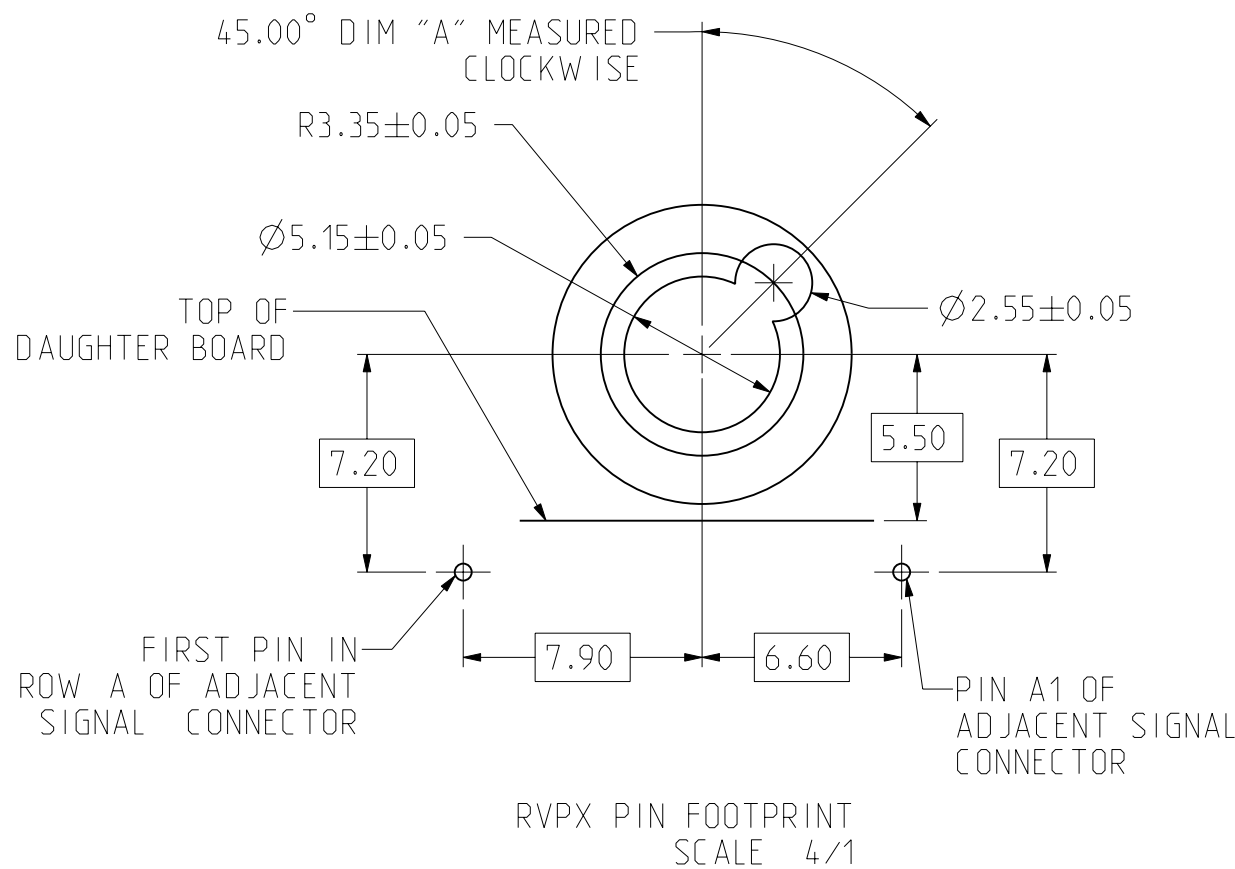
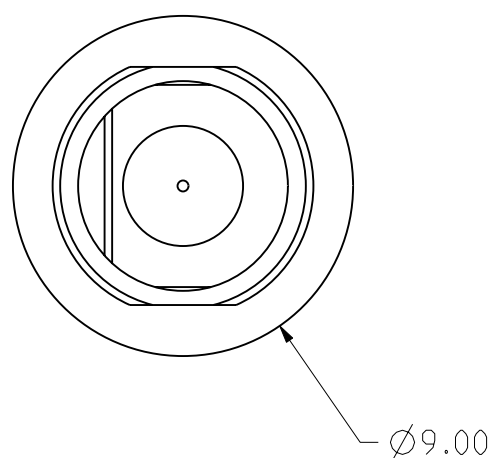
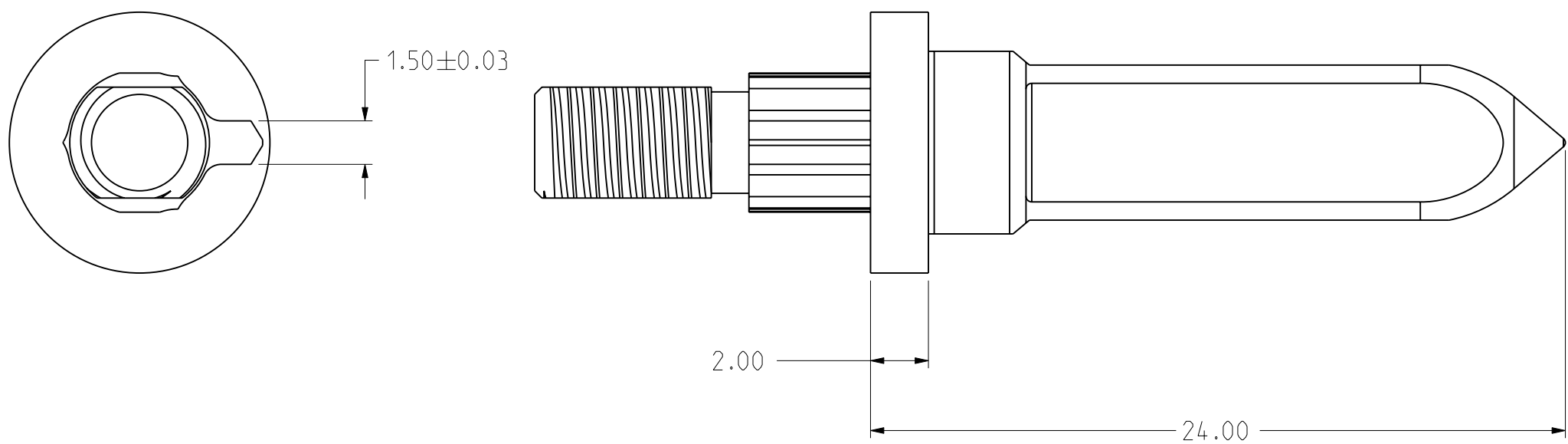
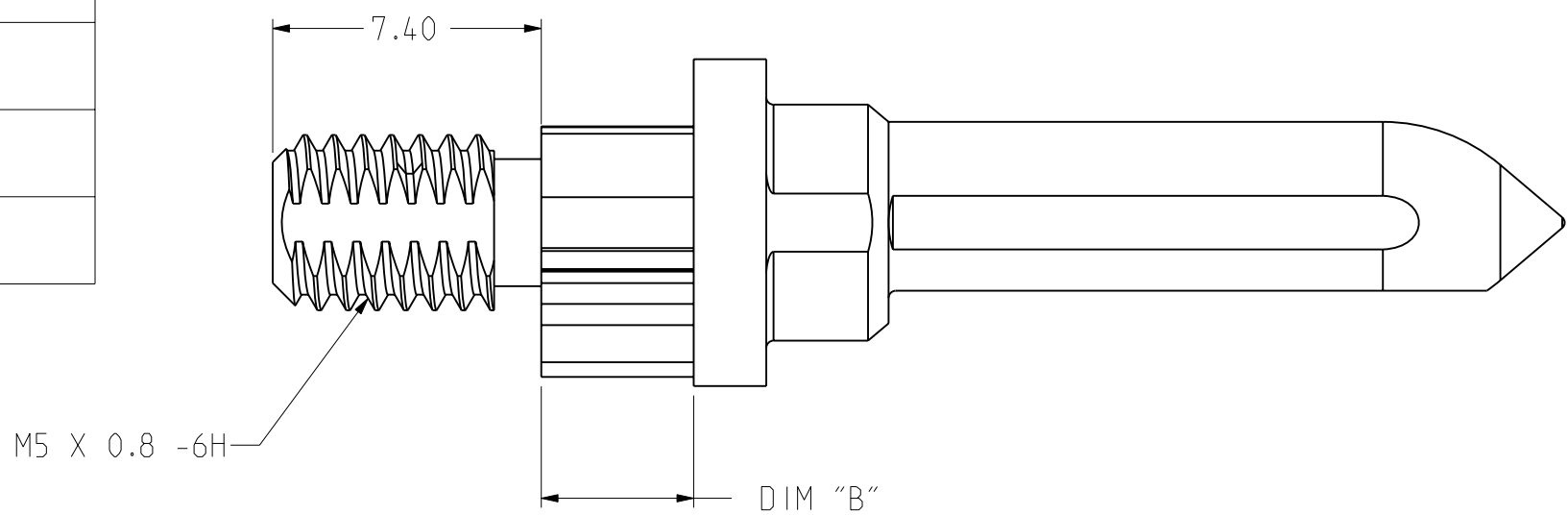


TABLE 1	
PART NUMBER	DIM B
RVPX-HPD-2	2.60
RVPX-HPD-3	4.20
RVPX-HPD-4	5.70



DIM "A"	MATING DC GUIDE
—	RVPX-HMD-9
315 °	RVPX-HMD-8
270 °	RVPX-HMD-7
90 °	RVPX-HMD-3
45 °	RVPX-HMD-2
0 °	RVPX-HMD-1


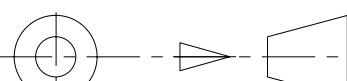
- 4 FINISH:  
3.81 $\mu$ m MINIMUM SILVER IN CONTACT AREA  
OVER NICKEL OVER COPPER ALL OVER
- 3 ANNULAR RING PLATED AROUND GUIDE PIN MOUNTING  
HOLE ON TOP AND BOTTOM SIDE OF BOARD
- 2 KEY HOLE ORIENTATION (DIM A) PER MATING  
GUIDE MODULE PART NUMBER TABLE  
(ORIENTATION SHOWN ON PCB LAYOUT IS FOR RVPX-HMD2)
- 1 MATERIAL: ZINC ALLOY

THE USE OF THIS DOCUMENT IS UNLIMITED.  
HOWEVER, DOCUMENTS REFERENCED HEREON  
MAY CONTAIN LIMITED RIGHTS DATA.

N / A
-------

NEXT ASSEMBLY

PRO/ENGINEER INFORMATION	
Pro/e Model Used:	RVPX-HPD-X.ASSEM
Drawing Name:	RVPX-HPD-X

UNLESS OTHERWISE SPECIFIED		SPECIFICATIONS		POS	QTY	PART NUMBER	DESCRIPTION	NOTE		
<div>LINER DIMENSIONS ARE IN MILLIMETERS</div> <div>TOLERANCES:</div> <div>.XXXX = ±. ANGLES= ±1°</div> <div>.XXX = ±.</div> <div>.XX = ±.13</div> <div>.X = ±.5</div> <div>-----</div> <div>DIM. &amp; TOL. PER ASME Y14.5M;</div> <div>DRM PER MIL-DTL-31000;</div> <div>OTHER Amphenol Sds. PER 9-3800</div> <div>LEGENDS:</div> <div>=FLAG NOTE CALL OUT</div> <div>REFERENCE ONLY</div> <div></div>		MATERIAL SPEC.		PARTS LIST						
		SEE NOTE 1		APPROVALS		DATE	<div>AMPHENOL CORPORATION</div> <div>40-60 DELAWARE AVENUE</div> <div>SIDNEY, N.Y. 13838</div>			
		PROCESS SPEC.		THIRD ANGLE PROJECTION		SIZE				CAGE CODE
		SEE NOTE 4		PREPARED BY S. LANGELIER		22-MAR-16	C	77820	RVPX-HPD-X	B
				ENGINEER IN CHARGE S. LANGELIER						
		DESIGN MANAGER J. PAUL								
		DESIGN ACTIVITY GROUP BOARD LEVEL								
						SCALE: 5.0		REF. NONE	SHEET 1 OF 1	

# Mouser Electronics

Authorized Distributor

Click to View Pricing, Inventory, Delivery & Lifecycle Information:

[Amphenol:](#)

[RVPX-HPD-4](#) [RVPX-HPD-2](#) [RVPX-HPD-3](#)