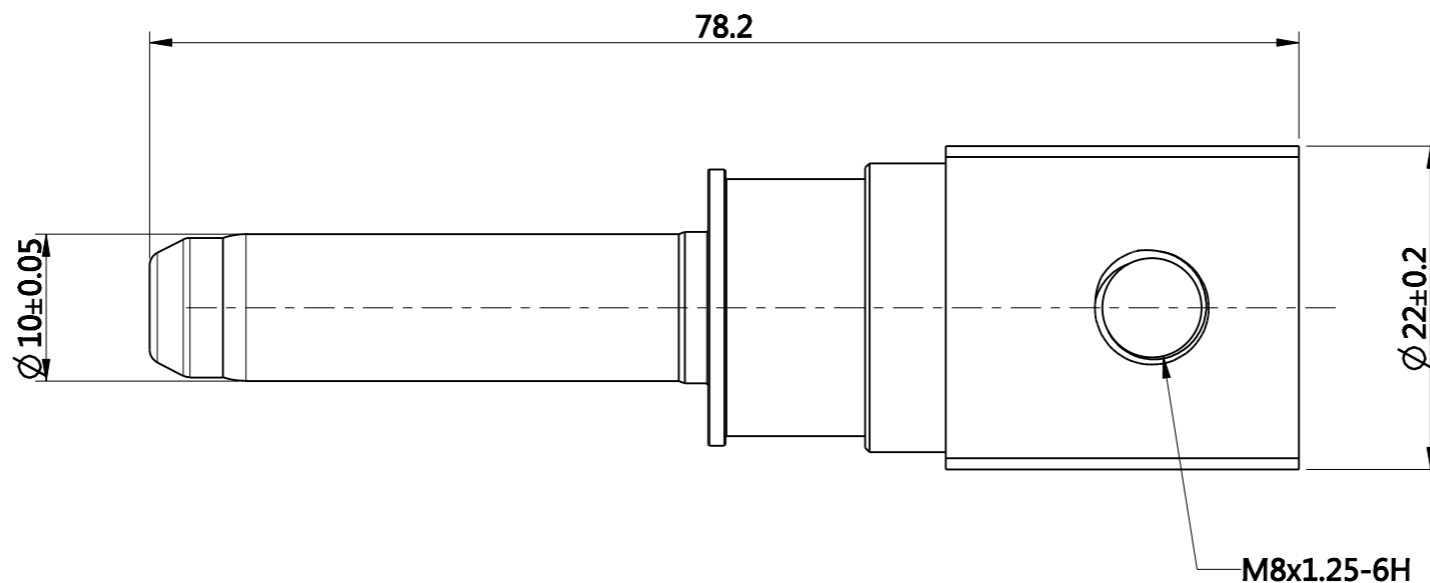


REV	ECN	DESCRIPTION	DATE	MODIFIED
1		PRE-RELEASE	2019.9.23	Celine.xie

Amphenol PCDSZ  
ORIGINAL  
PDF Format  
R&D



安费诺精密连接器(深圳)有限公司  
Amphenol PCD Shenzhen  
受控文件  
2019年9月24日

NOTES/备注:

- ✦ 1. TERMINAL : COPPER ALLOY , PIN CAP : PA66+GF25  
端子: 铜合金, 针帽: PA66+GF25
- ✦ 2. CURRENT TERMINAL(BUS-BAR(STANDARD THREAD M8)  
SET SCREW LOCKING TORQUE IS 15N.m Max  
M8建议的锁紧扭力最大15N.m
- ✦ 3. RoHS COMPLIANCE/满足RoHS
- ✦ CRITICAL CHARACTERISTIC MARKS/关键特性符号

<b>DIMENSIONS</b> ANSI Y14.5M UNITS: MM Pro/E FILE	<b>TOLERANCES</b> .X ±0.5 .XX ±0.05 ANGLES ±0.5°	<b>PROJECTION</b> 	Amphenol Pcd Shenzhen		<b>TITLE</b>  10 MM PIN CONTACT ASSEMBLY		
			ENGR Celine.xie	2019.9.23			
ORIGINAL NOT FOR CUSTOMER DISTRIBUTION	THIS DOCUMENT CONTAINS PROPRIETARY INFORMATION WHICH IS THE CONFIDENTIAL PROPERTY OF AMPHENOL PCD SHENZHEN		CHKD 	SIZE A3	DWG NO. C-C4200036152	REV 1	
			APPD 	CODE: 58982	SCALE: 1:1	SHEET 1 OF 1	

# Mouser Electronics

Authorized Distributor

Click to View Pricing, Inventory, Delivery & Lifecycle Information:

[Amphenol:](#)

[C4200036152](#)