

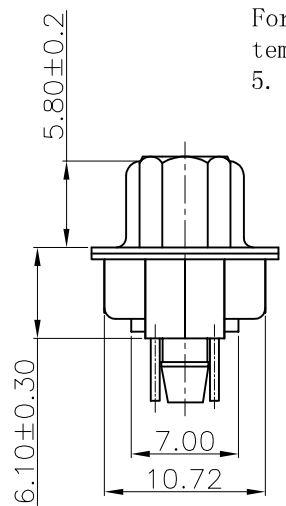
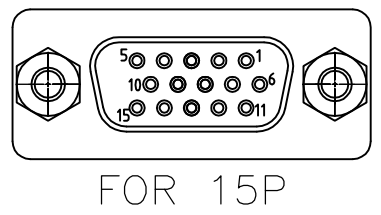
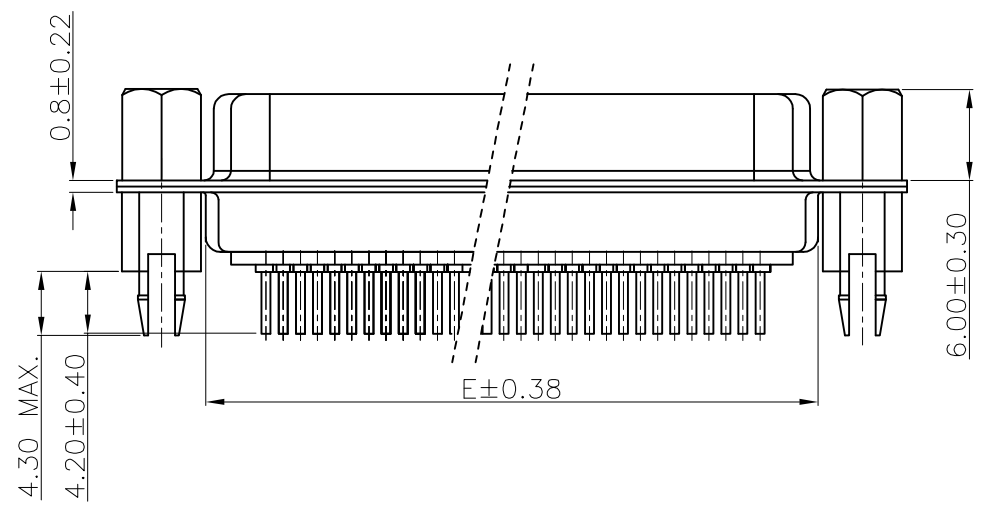
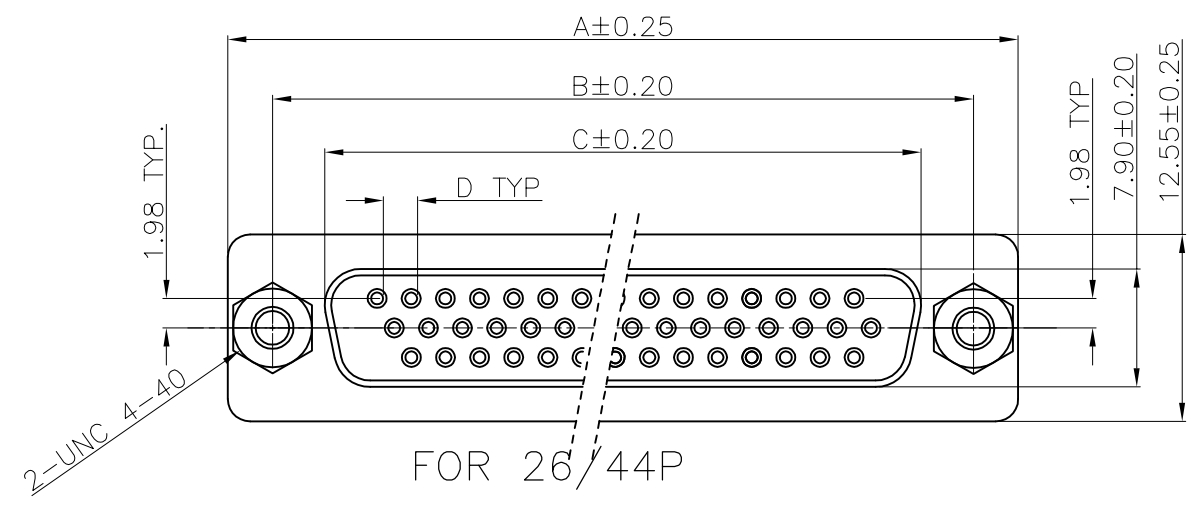
10090929-S XX X X LF
SERIES NO. TYPE
S: SOCKET PBT (FEMALE)
H: SOCKET PA9T (FEMALE)
(See Note 3)
NUMBER OF CONTACTS
15: 15-PIN
26: 26-PIN
44: 44-PIN
LF: ROHS COMPLIANT
FLANGE MOUNTING OPTION
X: UNC #4-40 CLINCHNUTS
CONTACT FINISH
4: FLASH GOLD
6: 30u" GOLD

POS.	PART NO.	THREAD TYPE
15	10090929-*15*XLF	UNC #4-40
26	10090929-*26*XLF	UNC #4-40
44	10090929-*44*XLF	UNC #4-40

POS.	A	B	C	D	E
15	30.81	24.99	16.33	2.29	19.10
26	39.24	33.32	24.66	2.29	27.75
44	53.04	47.04	38.38	2.29	41.30

mat'l. code				surface			tolerance			projection		product family			
-				ISO 1302			ISO 406			ISO 1101		D-SUB			
				tolerances unless otherwise specified						MM		title			
A T09-1156 JH 12/10/09				angles			linear			scale 2:1		H/D D-SUB FEMALE STRAIGHT			
B T10-0164 JH 10/19/10				0°±2°								dwg no			
C ELX-I-15500 AB 2013/08/21												sheet 1 of 3			
D ELX-I-18426 AB 2014/07/29				dr			JASON HSU			12/10/09		size			
E ELX-I-20972 AB 2015/05/30				engr			MITHUN PAUL			2016/04/27		10090929			
F ELX-I-24092 MP 2016/05/13				chr			GREGAR MATHEW			2019/08/22		A3			
G ELX-I-34650 GM 2019/08/22				appd			SANOJ P K			2019/08/22		type Product Customer Drawing			
sheet		revision		G		G									
index		sheet		1		2		3							

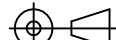


- NOTES:
- CHARACTERISTICS:
RATED VOLTAGE: 250V
RATED CURRENT: 2.5AMP
CONTACT RESISTANCE: 25mohms MAX. INITIAL,
40mohms MAX. AFTER.
INSULATION RESISTANCE: 5000Mohms MIN. at 500V DC
DIELECTRIC STRENGTH: 750VRMS
OPERATING TEMPERATURE RANGE: -55° C~105° C
INSERTION/EXTRACTION FORCE PER CONTACT: 5N Max./0.2N Min.
MATING/UNMATING CYCLES: 200MATINGS MIN FOR GOLD-FLASH
500MATINGS MIN FOR 30u" GOLD.
 - MATERIAL:
INSULATORS: THERMOPLASTIC G.F(UL94V-0) BLACK
CONTACTS: COPPER ALLOY, GOLD(G/F or 30u") TOP OVER CONTACT
AREA, 100u" Min MATTE TIN TOP OVER SOLDER AREA,
50u" Min NICKEL UNDER PLATE.
SHELL: CARBON STEEL, 100u" Min NICKEL TOP OVER,
50u" Min COPPER UNDER PLATE.
HARPOON: COPPER ALLOY , 100u" Min MATTE TIN PLATED.
 - Process conditions for soldering
For H type:
The housing will withstand exposure to 260° C peak temperature for 10 seconds maximum in a wave soldering application
For S Type:
The housing will withstand exposure to 205° C peak temperature for 5 seconds maximum in a wave soldering application
 - PART NUMBER DESCRIPTION:

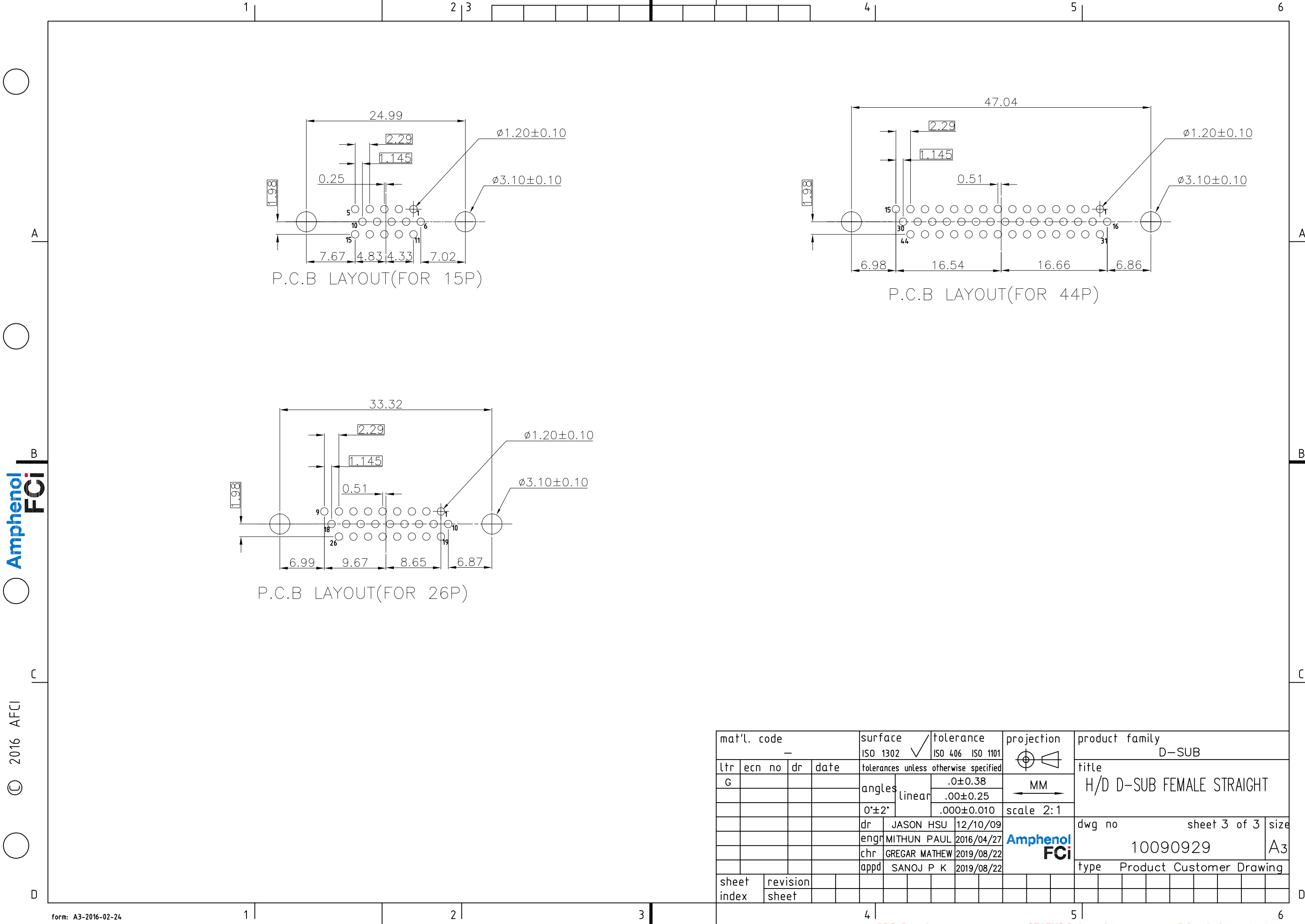


10090929-S XX X V LF
SERIES NO. TYPE S: SOCKET (FEMALE) H: SOCKET PAST (FEMALE) (See Note 3) LF: ROHS COMPLIANT FLANGE MOUNTING OPTION V: UNC #4-40 SCREWLOCKS
NUMBER OF CONTACTS 15: 15-PIN 26: 26-PIN 44: 44-PIN CONTACT FINISH 4: FLASH GOLD 6: 30u" GOLD

POS.	A	B	C	D	E
15	30.81	24.99	16.33	2.29	19.10
26	39.24	33.32	24.66	2.29	27.75
44	53.04	47.04	38.38	2.29	41.30

REMARK:
1. CHARACTERISTICS:
RATED VOLTAGE: 250V
RATED CURRENT: 2.5AMP
CONTACT RESISTANCE: 25mohms MAX. INITIAL, 40mohms MAX. AFTER.
INSULATION RESISTANCE: 5000Mohms MIN.at 500V DC
DIELECTRIC STRENGTH: 750VRMS
OPERATING TEMPERATURE RANGE: -55° C~105° C
INSERTION/EXTRACTION FORCE PER CONTACT: 5N Max./0.2N Min.
MATING/UNMATING CYCLES: 200MATINGS MIN FOR GOLD-FLASH 500MATINGS MIN FOR 30u" GOLD.
2. MATERIAL:
INSULATORS: THERMOPLASTIC G.F(UL94V-0) BLACK
CONTACTS: COPPER ALLOY,GOLD(G/F or 30U") TOP OVER CONTACT AREA,100u" Min MATTE TIN TOP OVER SOLDER AREA, 50u" Min NICKEL UNDER PLATE.
SHELL: CARBON STEEL,100u" Min NICKEL TOP OVER, 50u" Min COPPER UNDER PLATE.
HARPOON: COPPER ALLOY , 100u" Min MATTE TIN PLATED.
NUT: COPPER ALLOY , 50u" Min NICKEL PLATED.
3. Process conditions for soldering
For H type:The housing will withstand exposure to 260° C peak temperature for 10 seconds maximum in a wave soldering application
For S Type: The housing will withstand exposure to 205° C peak temperature for 5 seconds maximum in a wave soldering application
5. PART NUMBER DESCRIPTION:

mat'l. code —				surface ISO 1302 ✓		tolerance ISO 406 ISO 1101		projection 		product family D-SUB				
ltr	ecn no	dr	date	tolerances unless otherwise specified							title H/D D-SUB FEMALE STRAIGHT			
G				angles	linear	.0±0.38		scale 2:1	dwg no sheet 2 of 3 size 10090929 A3					
						.00±0.25								
				0°±2°		.000±0.010								
				dr	JASON HSU	12/10/09			type					
				engr	MITHUN PAUL	2016/04/27			Product					
				chr	GREGAR MATHEW	2019/08/22			Customer					
				appd	SANOJ P K	2019/08/22			Drawing					
sheet index		revision sheet												



Amphenol
FCi

© 2016 AFCI

Mouser Electronics

Authorized Distributor

Click to View Pricing, Inventory, Delivery & Lifecycle Information:

[Amphenol:](#)

[10090929-H154VLF](#) [10090929-H156VLF](#)