

5

4

3

2

1

0,25 B

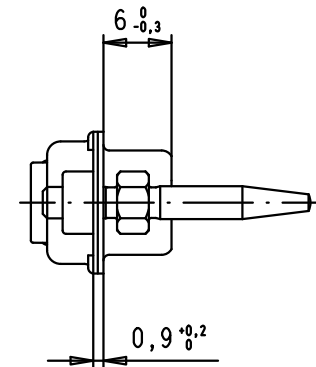
33,3 ±0,15

0,25 A

12,5 ±0,4

8,2 ±0,2

25,2 ±0,2



6,4

18,3

1,2

intended for front panel

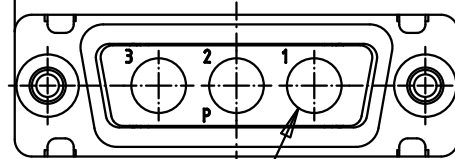
∅ 2,9

39,1 ±0,4

PCB layout, component side

6,86

16,65



∅ 0,1 AB

				Dat.	Name
			Detail.	25/11/09	PK
			Insp.		
			Stand.		
EC01002	25/11/09	PK	HARTING EURL F-95972 Paris		
Mod.	Dat.	Name			



All Dim. in mm
Orig. Size DIN A 4

D-Sub, 3W3, male,
without contacts,
tin plated shell with dimples,
clinch nuts and guiding pins

Maßstab/
Scale

1,5:1

TB 09 69 200 9211

Blatt/ Page

1 / 1

Sub.

Mouser Electronics

Authorized Distributor

Click to View Pricing, Inventory, Delivery & Lifecycle Information:

HARTING:

09692009211