

5

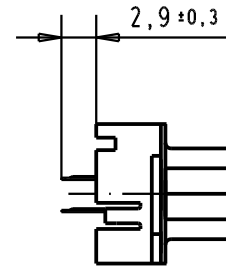
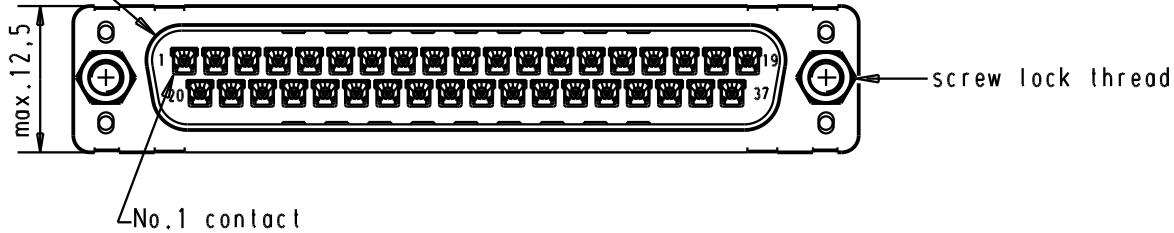
4

3

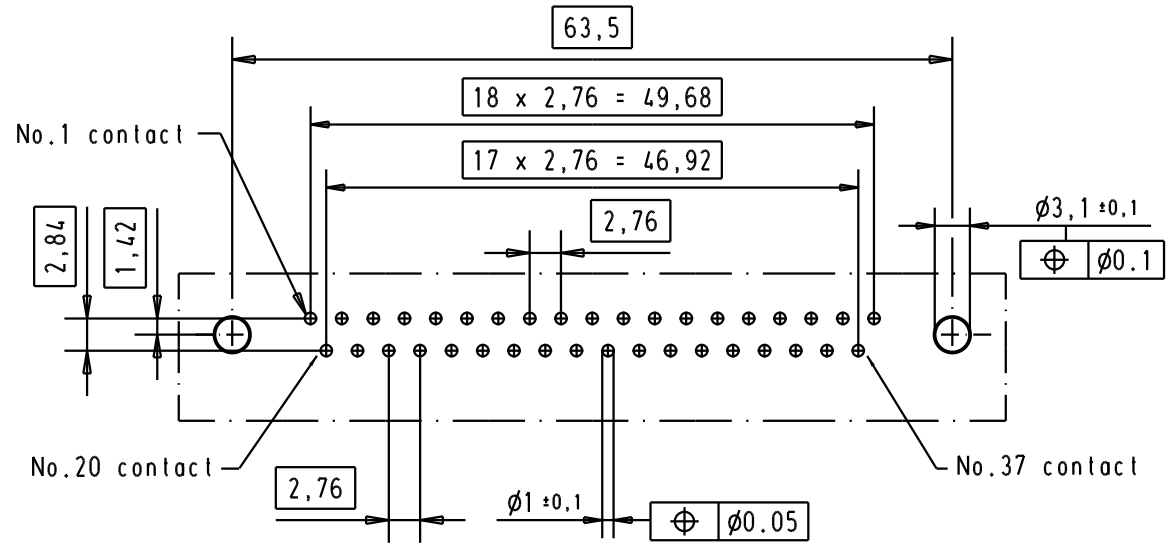
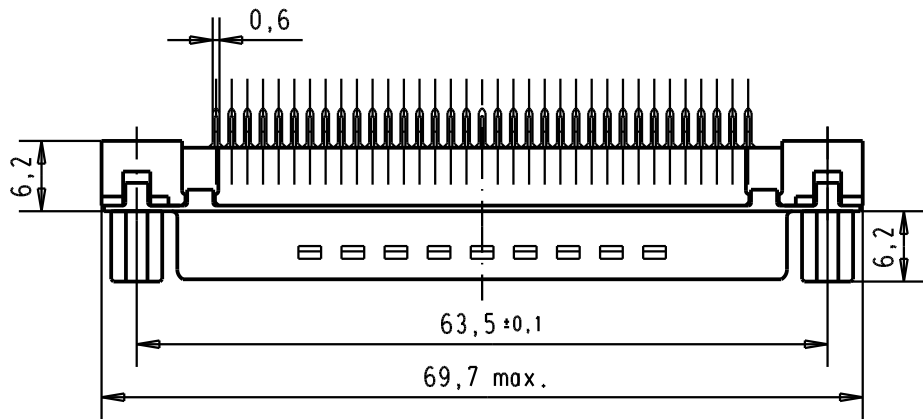
2

1



Mating face according to : MIL-C-24308 / DIN 41652 / CECC 75301-802



Printed board layout  
component side



A

								Dat.	Name	 All Dim. in mm Orig. Size DIN A 4	D-Sub, High temperature, 37 poles, male, straight, with solder pins 2,9 and screw lock.	Maßstab/ Scale 1.5:1
							Detail.	05/03/02	CV			
							Insp.					
								Stand.				
09 65 429 3703	4-40 UNC	1									<b>TB 09 65 429 x70x</b>	Blatt / Page 3
09 65 429 6703	4-40 UNC	2	31892	22/04/04	JH	HARTING EURL F-95972 Paris						
09 65 429 7703	4-40 UNC	3	29723	05/03/02	CV							
Part number	Screw lock thread	Performance level	Mod.	Dat.	Name				Sub.			

# Mouser Electronics

Authorized Distributor

Click to View Pricing, Inventory, Delivery & Lifecycle Information:

[HARTING:](#)

[09654296703](#) [09654297703](#)