

Connector Location A

Connector Location B

Width across flats 18

X

Mating face acc.
to IEC 61076-2-109

approx. 42

M12x1

M16x1,5

Width across flats 19

M12 X-coded PFT, Slim Design, 8-pole straight (IP65/67)

Width across flats 15

Ø6,7

approx. 45

Black overmolded body

Yellow protection latch
with HARTING logo

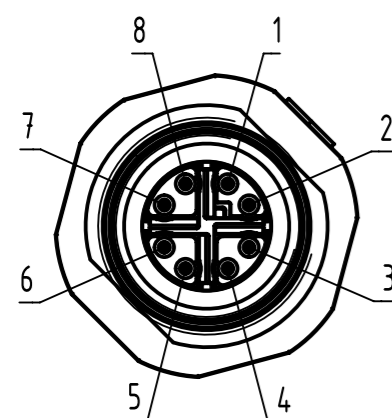
IP20 RJ45 DualBoot Cat. 6A, 8-pole

Mating face RJ45
acc. to IEC 60603-7

Y

X

female
(without nut and seal)

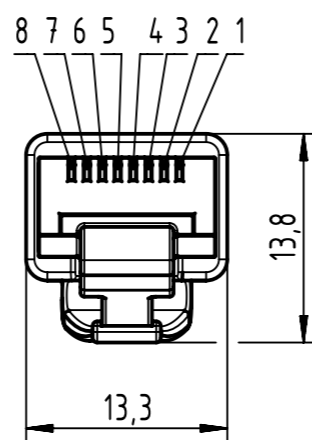


Loading Plan
acc. to TIA/EIA 568B

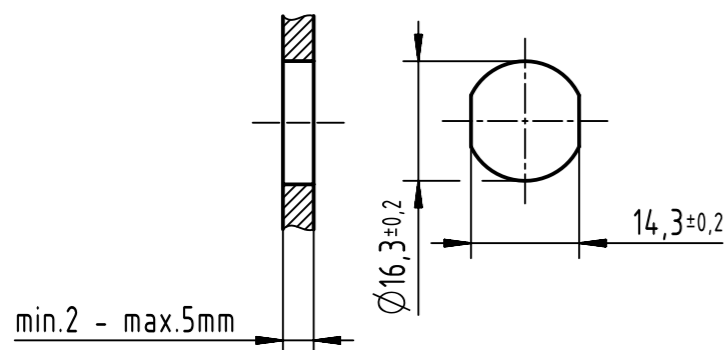
Shield			
1	white/orange	1	
2	orange	2	
3	white/green	3	
4	blue	4	
5	white/blue	5	
6	green	6	
7	white/brown	7	
8	brown	8	

Y

male



Panel cut out



- Temperature range: -40°C ... +70°C
- Nut and seal pre-packaged in a separate poly-bag within the main poly-bag
- * Cat.6A 10 Gbit/s Ethernet transmission possible for lengths up to 45m

6.0 to 100	±1%
0.6 to 5.9	+0.04
0.2 to 0.5	+0.02
a [m]	Tolerance

length in "1m" step	100	XXX=000
	99	XXX=990
	12	XXX=120
	11	XXX=110
length in "0.1m" step	10	XXX=100
	9.9	XXX=099
	9.8	XXX=098
	0.5	XXX=005
	0.4	XXX=004
	0.3	XXX=003
	0.2	XXX=002
Step	a [m]	XXX

HARTING IE Cat.6A
4x2xAWG 26/7 PUR yellow

09487247756XXX

Type of cable

Part no.

All Dimensions in mm		Tech. Character.		Free size tol.		According to production drawing	
All rights reserved		Created by MUNTEANV Muntean		Inspected by MUNTEANV Muntean		Standardisation MUNTEANV Muntean	
Department HCS - RO		Date 2022-02-02		State Final Release		Doc-Key / ECM-Nr. 100874776/UGD/000/A 500000210418	
HARTING Customised Solutions D-32339 Espelkamp		Title M12 X-Cod PFT female - RJ45 PUR		Type TB		Number 09487247756XXX	
				Rev. A		Page 1/1	

Mouser Electronics

Authorized Distributor

Click to View Pricing, Inventory, Delivery & Lifecycle Information:

[HARTING:](#)

[09487247756030](#)