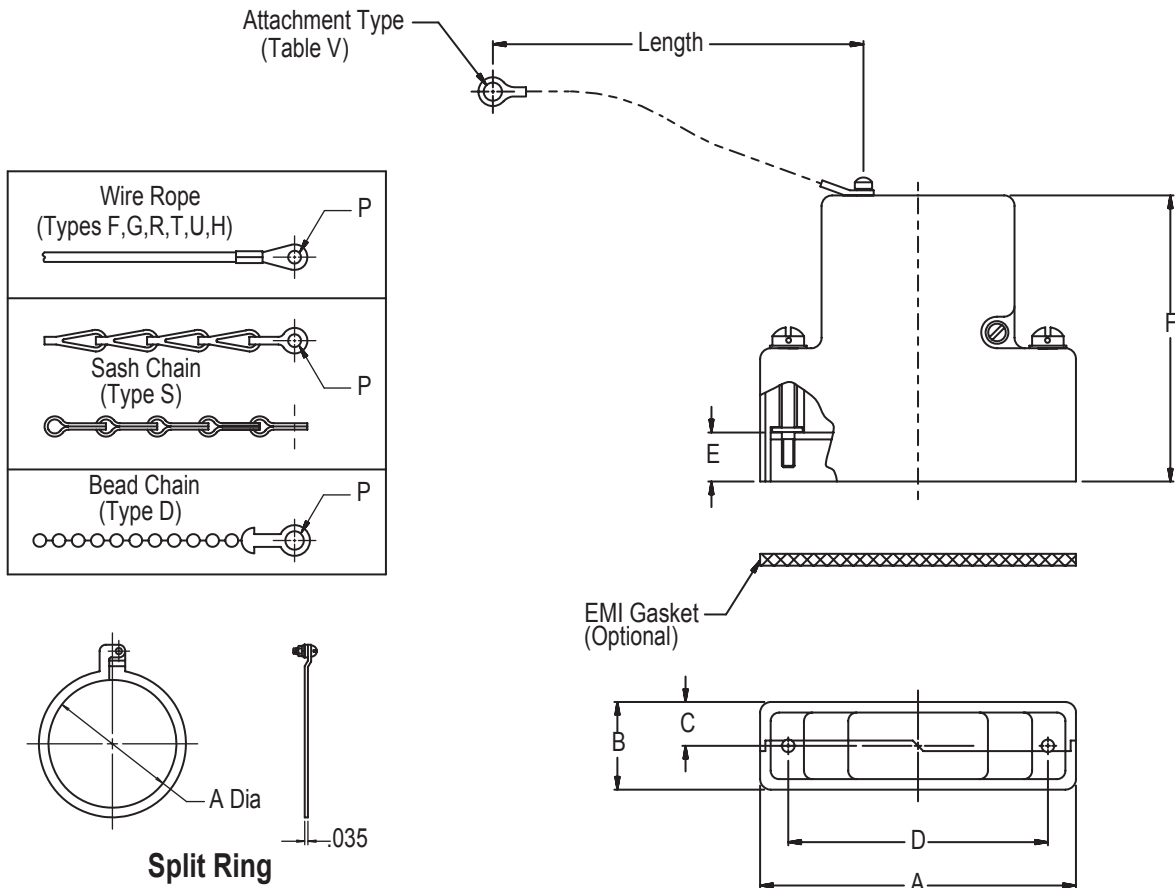
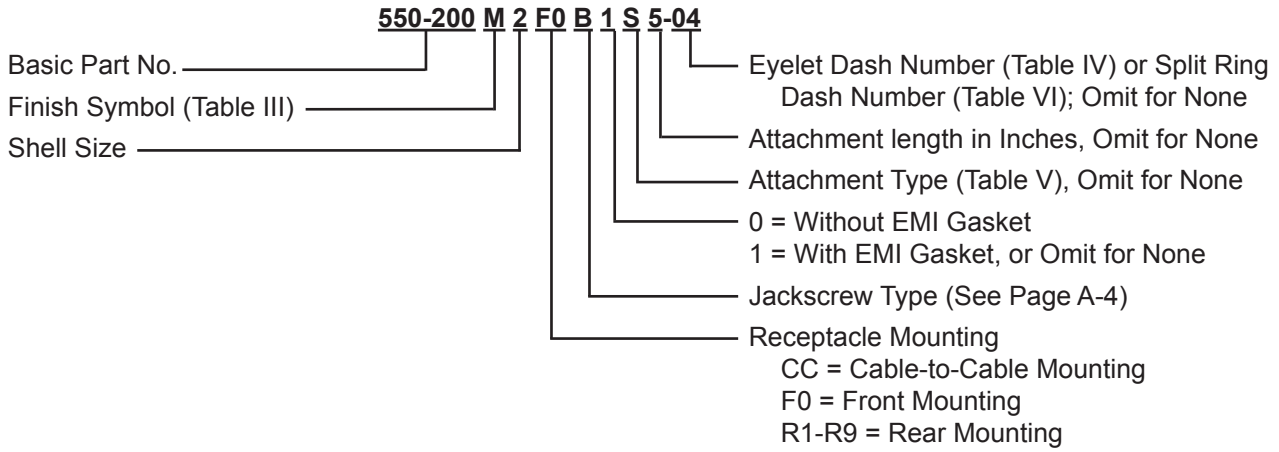




550-200 D-Subminiature Shorting Cap Split Backshells



550-200 D-Subminiature Shorting Cap Split Backshells



TABLE I: Common Backshell Dimensions

| Dash No. | A Max | B Max | C | D ± .005 (0.13) |
|----------|--------------|-------------|-------------|--------------------|
| 1 | 1.393 (35.4) | .624 (15.8) | .322 (8.2) | .984 (25.0) |
| 2 | 1.706 (43.4) | .624 (15.8) | .322 (8.2) | 1.312 (33.3) |
| 3 | 2.265 (57.5) | .624 (15.8) | .322 (8.2) | 1.852 (47.0) |
| 4 | 2.900 (73.7) | .624 (15.8) | .322 (8.2) | 2.500 (63.5) |
| 5 | 2.800 (71.1) | .735 (18.7) | .375 (9.5) | 2.406 (61.1) |
| 6 | 2.900 (73.7) | .844 (21.4) | .422 (10.7) | 2.500 (63.5) |

TABLE II: Cable Mounting Dimensions

| Dash No. | Panel Thickness | E | F | | |
|----------|-----------------|------------|--------------|--------------|--------------|
| | | | Sizes 1 & 2 | Sizes 3 to 5 | Size 6 |
| CC | N/A | .174 (4.4) | 1.451 (36.9) | 1.671 (42.4) | 1.820 (46.2) |
| F0 | N/A | .343 (8.7) | 1.625 (41.3) | 1.844 (46.8) | 2.000 (50.8) |
| R1 | .031 (0.8) | .247 (6.3) | 1.525 (38.7) | 1.745 (44.3) | 1.890 (48.0) |
| R2 | .047 (1.2) | .231 (5.9) | 1.509 (38.3) | 1.728 (43.9) | 1.875 (47.6) |
| R3 | .062 (1.6) | .216 (5.5) | 1.500 (38.1) | 1.720 (43.7) | 1.860 (47.2) |
| R4 | .093 (2.4) | .185 (4.7) | 1.470 (37.3) | 1.690 (42.9) | 1.829 (46.5) |
| R5 | .104 (2.6) | .174 (4.4) | 1.451 (36.9) | 1.671 (42.4) | 1.820 (46.2) |
| R6 | .125 (3.2) | .153 (3.9) | 1.430 (36.3) | 1.650 (41.9) | 1.798 (45.7) |
| R7 | .156 (4.0) | .125 (3.2) | 1.400 (35.6) | 1.620 (41.1) | 1.767 (44.9) |
| R8 | .135 (3.4) | .140 (3.6) | 1.417 (36.0) | 2.637 (41.6) | 1.805 (45.8) |
| R9 | .188 (4.8) | .094 (2.4) | 1.368 (34.7) | 2.590 (40.4) | 1.740 (44.2) |

TABLE III: Finishes

| Symbol | Description |
|--------|---|
| A | Cadmium Plate/Bright Dip |
| B | Cadmium Plate/Olive Drab |
| J | Gold Iridite over Cadmium Plate over Nickel |
| M | Electroless Nickel |
| N | Cadmium Plate/Olive Drab over Nickel |
| NF | Cadmium/Olive Drab over Electroless Nickel (1,000 Hr. Salt Spray) |
| T | Cadmium Plate/Bright Dip over Nickel |
| Y | Gold Iridite over Cadmium Plate |

TABLE IV: Attachment Diameter P

| Dash No. | P Dia ± .010 (0.25) |
|----------|------------------------|
| 01 | .140 (3.6) |
| 02 | .182 (4.6) |
| 03 | .191 (4.9) |
| 04 | .197 (5.0) |
| 05 | .167 (4.2) |
| 06 | .125 (3.2) |
| 07 | .218 (5.5) |
| 09 | .156 (4.0) |
| 00 | No Eyelet |

TABLE V: Attachment Options

| Symbol | Description |
|--------|---------------------------------|
| D | Bead Chain, CRES, Passivated |
| F | Wire Rope, Nylon Jacket |
| G | Nylon Rope |
| H | Wire Rope, Teflon Jacket |
| R | Wire Rope, PVC Jacket |
| T | Wire Rope, No Jacket |
| S | #8 Sash Chain, CRES, Passivated |
| U | Wire Rope, Polyurethane Jacket |

TABLE VI: Split Ring Diameter and Maximum Mandrel Diameter

| Dash No. | A Dia | Max Mandrel Dia (See Note 3) |
|----------|--------------|---------------------------------|
| 50 | .425 (10.8) | .410 (10.4) |
| 52 | .485 (12.3) | .470 (11.9) |
| 54 | .640 (16.3) | .625 (15.9) |
| 56 | .750 (19.1) | .735 (18.7) |
| 58 | .890 (22.6) | .875 (22.2) |
| 60 | 1.015 (25.8) | 1.000 (25.4) |
| 62 | 1.095 (27.8) | 1.080 (27.4) |
| 64 | 1.130 (28.7) | 1.115 (28.3) |
| 66 | 1.250 (31.8) | 1.235 (31.4) |
| 68 | 1.350 (34.3) | 1.335 (33.9) |
| 70 | 1.375 (34.9) | 1.360 (34.5) |
| 72 | 1.485 (37.7) | 1.470 (37.3) |
| 74 | 1.625 (41.3) | 1.610 (40.9) |
| 76 | 1.750 (44.5) | 1.735 (44.1) |
| 78 | 1.875 (47.6) | 1.860 (47.2) |
| 80 | 1.980 (50.3) | 1.965 (49.9) |
| 82 | 2.060 (52.3) | 2.045 (51.9) |
| 84 | 2.235 (56.8) | 2.220 (56.4) |
| 86 | 2.310 (58.7) | 2.295 (58.3) |
| 88 | 2.475 (62.9) | 2.460 (62.5) |
| 90 | 2.655 (67.4) | 2.640 (67.1) |
| 92 | 2.810 (71.4) | 2.795 (71.0) |
| 94 | 3.045 (77.3) | 3.030 (77.0) |

1. Metric dimensions (mm) are indicated in parentheses.
2. **DO NOT USE CONNECTORS WITH FLOAT MOUNTINGS.**
3. Maximum recommended diameter of Mandrel over which assembled ring will rotate freely.

Standard Materials and Finishes



The following are Glenair's standard finishes. Individual product pages within this catalog list their most common finishes. Additional finishes are listed within the table below.

TABLE II - STANDARD FINISHES

| GLENAIR M85049 SYMBOL | | FINISH | SPECIFICATION(S) |
|-----------------------|----------------|--|--|
| SYMBOL | REFERENCE ONLY | | |
| B | | Cadmium Plate, Olive Drab | AMS-QQ-P-416, Type II, Class 3 |
| C* | A | Anodize, Black | AMS-A-8625, Type II, Class 2 |
| G* | | Hard Coat, Anodic | AMS-A-8625, Type III, Class 1 |
| J | | Iridite, Gold Over Cadmium Plate Over Electroless Nickel | MIL-C-5541, Class 3 AMS-QQ-P-416, Type II, Class 3 over AMS-C-26074, Class 3 or 4, Grade B |
| LF | | Cadmium Plate, Bright Over Electroless Nickel | 1000 Hour Corrosion Resistance |
| M | N | Electroless Nickel | AMS-C-26074, Class 4, Grade B; & ASTM B733-90, SC2, Type 1, Class 4 |
| N | | Cadmium Plate, Olive Drab Over Electroless Nickel | AMS-QQ-P-416, Type II, Class 3 over Electroless Nickel AMS-C-26074 |
| NC | | Zinc Cobalt, Dark Olive Drab | 96 Hour Corrosion Resistance |
| NF | W | Cadmium Plate, Olive Drab Over Electroless Nickel | 1000 Hour Corrosion Resistance |
| T | | Cadmium Plate, Bright Over Electroless Nickel | AMS-QQ-P-416, Type II, Class 3 over Electroless Nickel, AMS-C-26074, Class 3 or 4, Grade B |
| U** | | Cadmium Plate, Black | AMS-QQ-P-416, Type II, Class 3 |
| ZN | | Zinc-Nickel Alloy, Olive Drab | ASTMB 841-91, Over Electroless Nickel 1000 Hour Salt Spray |

* Anodize finish; not suitable for EMI Shielding or grounding applications.
** Applicable to corrosion resisting steel backshells and accessories. Consult factory for other available finishes.

STANDARD MATERIALS - BACKSHELLS AND ACCESSORIES

| COMPONENT | MATERIAL | SPECIFICATION |
|--|------------------------------|---------------------------------------|
| Machined components: such as backshell bodies, fabricated elbows, protective covers, rotatable couplers, dummy stowage receptacles, lock nuts, G-spring support rings, EMI ground rings, grommet followers, etc. | Aluminum | AMS-QQ-A-200 ASTMB221, 209 |
| Die cast components: such as angular backshells, strain relief backshells, strain relief bodies, strain relief saddles, special EMI ground rings, etc. | Aluminum | QQ-A-591 ASTMB85, 26 |
| Backshells or strain reliefs: available in optional corrosion resisting steel; and hardware: such as screws, washers, rivets, wire rope, sash chain, band straps, etc. | Corrosion Resisting Steel | ASTMA582 (300 Series) AMS-QQ-S-763 |
| Elastomeric seals: such as O-rings, cable jacket seals, grommets, etc. | Silicone | ZZ-R-765, MIL-R-25988 |
| Anti-friction and thrust washers | Teflon | TFE |
| Anti-rotation device | Corrosion Resistant Material | N/A |

NOTES

Unless otherwise specified, the following dimensional tolerances will apply:

.xx = ± .03 (0.8)
.xxx = ± .015 (0.4)
Lengths = ± .060 (1.52)
Angles = ± 5°

Metric dimensions (mm) are indicated in parentheses

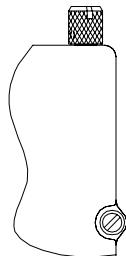


D-Subminiature Backshells Jackscrew Options

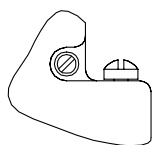
JACKSCREW - STYLE E (END ENTRY)

Type J Knurled Slotted Head

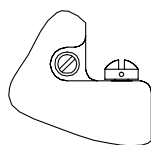
All jackscrews have 4-40 UNC-2A threads to mate with M24308/26 female screwlocks or 559-001 mounting kits. Not applicable for cable-to-cable applications.



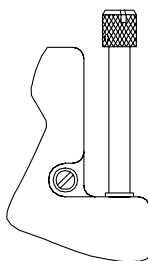
MALE JACKSCREW OPTIONS



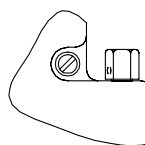
Type B
Fillister Head



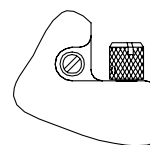
Type D
Drilled
Fillister Head



Type E *
Extended Knurled
Slotted Head



Type H
Hex Head

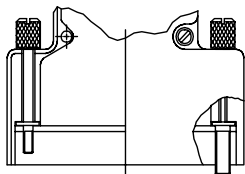


Type K *
Knurled Slotted
Head

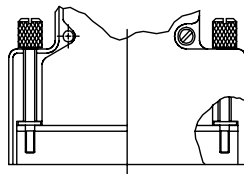
Unless otherwise noted, all jackscrews have 4-40 UNC-2A threads to mate with M24308/26 female screwlocks or 559-001 mounting kits. Not applicable for cable-to-cable applications.

* Not available for Style "E" (end entry backshells).

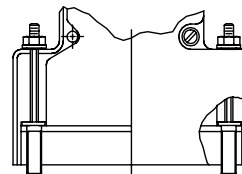
POLARIZING JACKSCREW OPTIONS



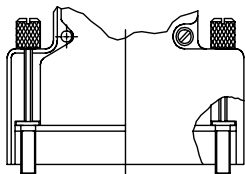
Type F
Turnable Male & Female



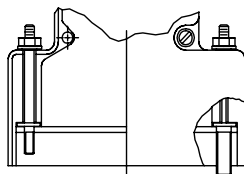
Type M
Turnable Males



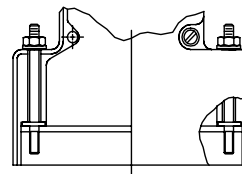
Type P
Fixed Females



Type L
Turnable Females



Type N
Fixed Male & Female



Type R
Fixed Males

Mouser Electronics

Authorized Distributor

Click to View Pricing, Inventory, Delivery & Lifecycle Information:

[Glenair:](#)

[550-200M1R2H](#) [550-200M3R6E](#)