



Installation manual

# Sunrise & Sunlight evaluation kit



x1

x1

NOTE:  
ESD sensitive product.  
Use ESD protection equipment.



1

a



b



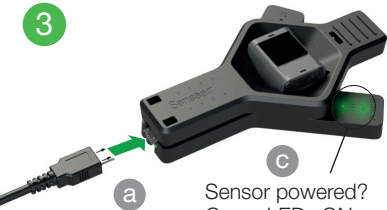
2

b

a



3



a

Sensor powered?  
Green LEDs ON



b

Connect to computer

4

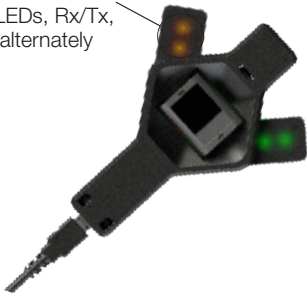
Download software &  
USB Com Cable Driver:



[https://senseair.com/product/  
sunrise-sunlight-evaluation-kit/](https://senseair.com/product/sunrise-sunlight-evaluation-kit/)

5

Sensor connected?  
Yellow LEDs, Rx/Tx,  
flashes alternately



# IMA8637 Rev 5





Senseair AB (headquarter)  
[www.senseair.com](http://www.senseair.com)



# Mouser Electronics

Authorized Distributor

Click to View Pricing, Inventory, Delivery & Lifecycle Information:

[Senseair:](#)

[00-0-0108](#) [00-0-0012](#) [00-0-0101](#)